

WRIGHTSTOWN, NEW JERSEY

VOR/DME or TACAN RWY 18

26078

VORTAC GXU 110.6 Chan 43	APCH CRS 179°	Rwy Ildg 7126 TDZE 123 Arpt Elev 141
--	-------------------------	---

[USAF]

(JOINT BASE MC GUIRE DIX LAKEHURST) (KWRI)

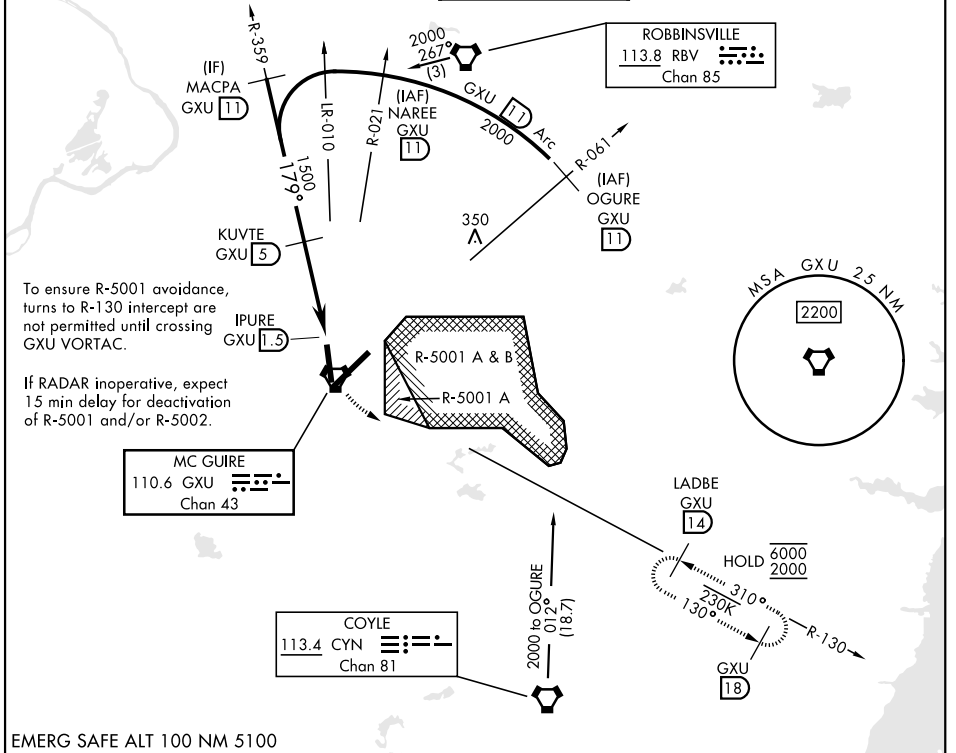
MC GUIRE FLD,

RADAR required when R-5001 and/or R-5002 is active.

MISSED APPROACH: Climb to 2000 via GXU VORTAC R-130 to LADBE and hold, DO NOT turn prior to GXU.

* Circling NA SE of RWY 24 and E of RWY 36 when R-5001 A/B active.

ATIS 110.6 270.1	MC GUIRE APP CON/DEP CON 126.475 363.8	TOWER 118.65 255.6	GND CON 121.8 275.8	PAR
----------------------------	--	------------------------------	-------------------------------	-----



NE-2, 14 MAY 2026 to 11 JUN 2026

NE-2, 14 MAY 2026 to 11 JUN 2026

EMERG SAFE ALT 100 NM 5100

OGURE R-061 GXU 11	NAREE R-021 GXU 11	MACPA R-359 GXU 11	KUVTE GXU 5	GXU 2.5	IPURE GXU 1.5	LADBE GXU 14	ELEV 141	TDZE 123
CATEGORY	A	B	C	D	E			
S-18	640-1	517 (500-1)	640-1½	517 (500-1½)				
CIRCLING *	680-1	539 (600-1)	700-1½ 559 (600-1½)	700-2 559 (600-2)	1200-3 1059 (1100-3)			

WRIGHTSTOWN, NEW JERSEY

Amdt 8 18MAY23

40°00'N-74°36'W

(JOINT BASE MC GUIRE DIX LAKEHURST) (KWRI)

MC GUIRE FLD,

VOR/DME or TACAN RWY 18

REIL Rwy 18, 36

TDZL/CL Rwy 6