

WRIGHTSTOWN, NEW JERSEY

VOR/DME or TACAN RWY 24

VORTAC GXU 110.6 Chan 43	APCH CRS 243°	Rwy ldg TDZE Arprt Elev	10,456 117 141
--------------------------------	------------------	-------------------------------	----------------------

(USAF)

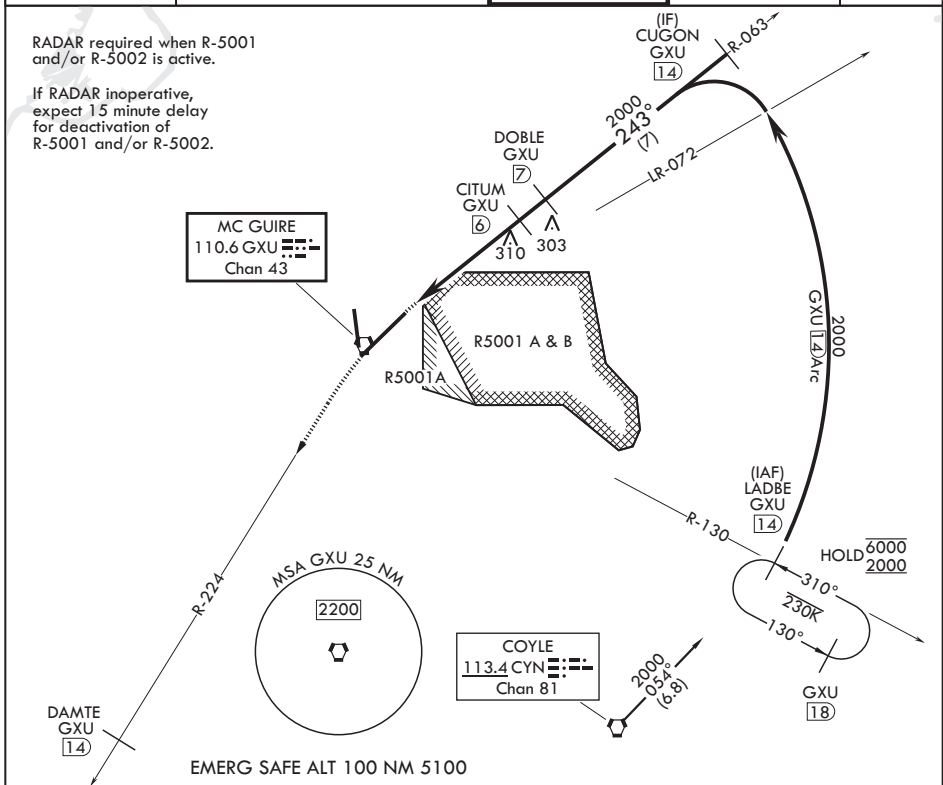
MC GUIRE FIELD (JOINT BASE MC GUIRE DIX LAKEHURST) (KWRI)

V * When ALS inop, increase CAT AB RVR to 55 and vis to 1 mile, CAT CDE vis to 1 1/2 miles.
 ** Circling NA SE of Rwy 24 and E of Rwy 36 when R-5001 A/B Active.



MISSED APPROACH: Climb to 2000 via GXU R-224 to DAMTE, Expect further clearance from ATC.

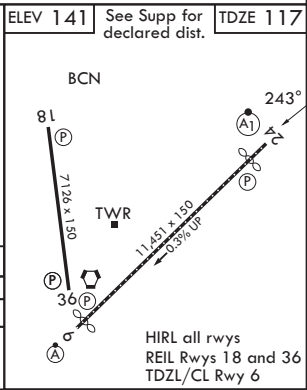
ATIS 110.6 270.1	MC GUIRE APP CON/DEP CON 126.475 363.8	TOWER 118.65 255.6	GND CON 121.8 275.8	PAR
---------------------	---	-----------------------	------------------------	-----



NE-2, 14 MAY 2026 to 11 JUN 2026

NE-2, 14 MAY 2026 to 11 JUN 2026

2000 GXU R-224	DAMTE GXU 14	DOBLE 7	CUGON 14
VORTAC	LAYEG 2	CITUM 6	DOBLE 7
0.6	4 NM	1 NM	
CATEGORY	A	B	C
S-24*	640/24 523 (500-1/2)	640/55 523 (500-1)	640/55 523 (500-1)
CIRCLING**	680-1 539 (600-1)	700-1 1/2 559 (600-1/2)	700-2 559 (600-2)
		1200-3 1059 (1100-3)	



WRIGHTSTOWN, NEW JERSEY

MC GUIRE FIELD (JOINT BASE MC GUIRE DIX LAKEHURST) (KWRI)

Amdt 8 18MAY23

40°01'N - 74°36'W

VOR/DME or TACAN RWY 24