

FORT KNOX, KENTUCKY

ILS or LOC/DME RWY 18

LOC/DME I-FTK 108.95 Chan 26 (Y)	APCH CRS 180°	Rwy Idg THRE Arprt Elev 5184 754 754
--	-------------------------	--

AL-151 [USA]

GODMAN AAF (KF TK)

▼ *NA when train is on track north and east of Rwy 18, control twr will advise when train is on track. NA when control twr closed.
 ** When ALS inop, increase CAT CD vis to 1½ miles.



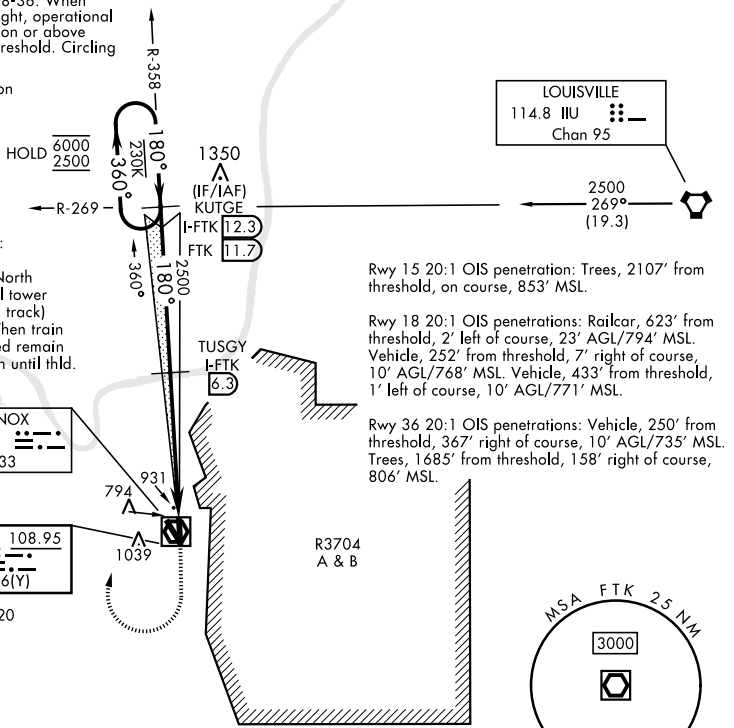
MISSED APPROACH: Climb to 1300, then climbing right turn to 2500 on heading 030° to intercept FTK VOR/DME R-358 to KUTGE INT/I-FTK 12.3 DME and hold.

ATIS 109.6	LOUISVILLE APP CON 132.075 327.0	TOWER ★ 133.35 (CTAF) 0	GND CON 121.9 239.3
----------------------	--	-----------------------------------	-------------------------------

*** Circling NA E of Rwy 18-36. When circling to Rwy 36 at night, operational VGSI required, remain on or above VGSI glidepath until threshold. Circling to Rwy 15 NA at night.

Helicopter visibility reduction below 1 mile NA.

LOC Night landing Rwy 18:
Operational VGSI required when train is on the track North and East of Rwy 18 (control tower will advise when train is on track) or when tower is closed. When train is on track or tower is closed remain on or above VGSI glidepath until thld.



FORT KNOX
109.6 FTK
Chan 33

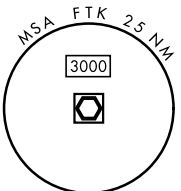
LOCALIZER 108.95
I-FTK
Chan 26(Y)

LOUISVILLE
114.8 IUU
Chan 95

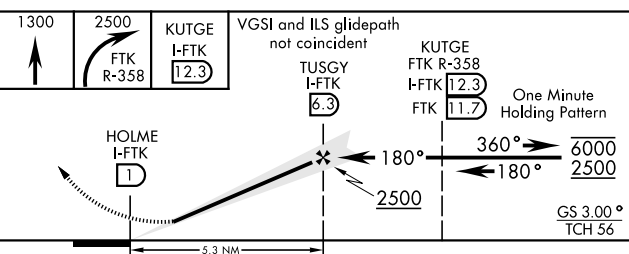
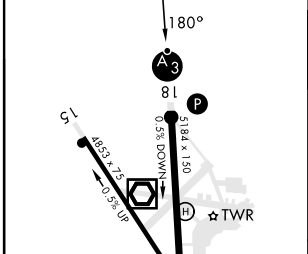
Rwy 15 20:1 OIS penetration: Trees, 2107' from threshold, on course, 853' MSL.

Rwy 18 20:1 OIS penetrations: Railcar, 623' from threshold, 2' left of course, 23' AGL/794' MSL. Vehicle, 252' from threshold, 7' right of course, 10' AGL/768' MSL. Vehicle, 433' from threshold, 1' left of course, 10' AGL/771' MSL.

Rwy 36 20:1 OIS penetrations: Vehicle, 250' from threshold, 367' right of course, 10' AGL/735' MSL. Trees, 1685' from threshold, 158' right of course, 806' MSL.



ELEV 754	THRE 754
----------	----------



CATEGORY	A	B	C	D
S-ILS 18 **		1005-1	251 (300-1)	
S-LOC 18 **		1160-1	406 (500-1)	
☑ CIRCLING ***	1340-1	586 (600-1)	1340-1½ 586 (600-1½)	1340-2 586 (600-2)

FORT KNOX, KENTUCKY

37°54'N-85°58'W

GODMAN AAF (KF TK)

Amtd 1 13JUL23

ILS or LOC/DME RWY 18

SE-1, 14 MAY 2026 to 11 JUN 2026

SE-1, 14 MAY 2026 to 11 JUN 2026