

# RNAV (GPS) RWY 36

APCH CRS	Rwy ldg	5184
015°	TDZE	740
	Arprt Elev	754

AL-151 [USA]

GODMAN AAF (KFTK)

RNP APCH - GPS

ODALS

MISSED APPROACH: Climbing left turn to 2500 direct HONAL and hold.

▼ \* Straight-in Rwy 36 at night, operational VGSI required, remain on or above VGSI glidepath until threshold. When ALS inop, increase CAT CD vis to 1½ miles. Helicopter visibility reduction below 1 mile NA.

ATIS

109.6

LOUISVILLE APP CON

132.075 327.0

TOWER ★

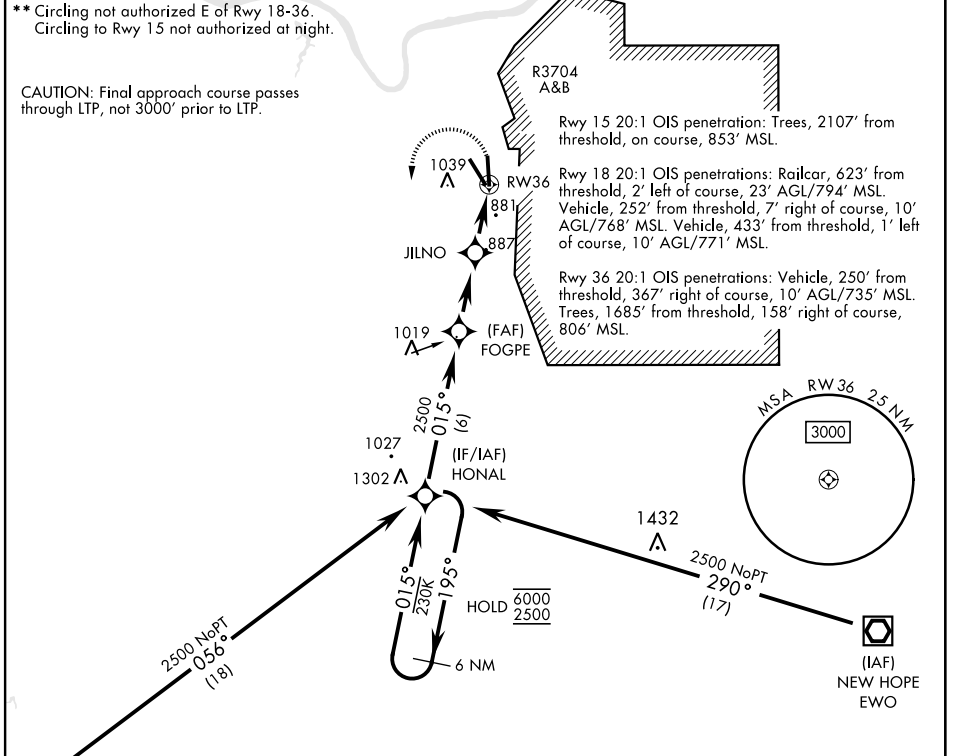
133.35 (CTAF) 0

GND CON

121.9 239.3

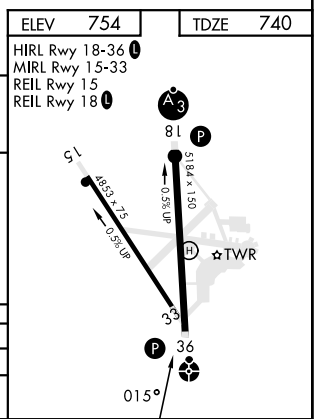
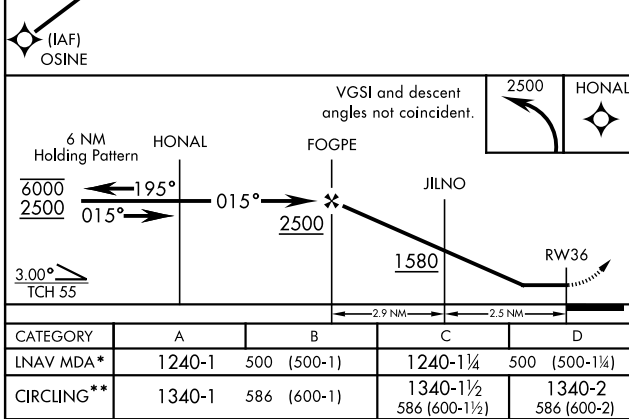
\*\* Circling not authorized E of Rwy 18-36.  
Circling to Rwy 15 not authorized at night.

CAUTION: Final approach course passes through LTP, not 3000' prior to LTP.



SE-1, 14 MAY 2026 to 11 JUN 2026

SE-1, 14 MAY 2026 to 11 JUN 2026



# RNAV (GPS) RWY 36