

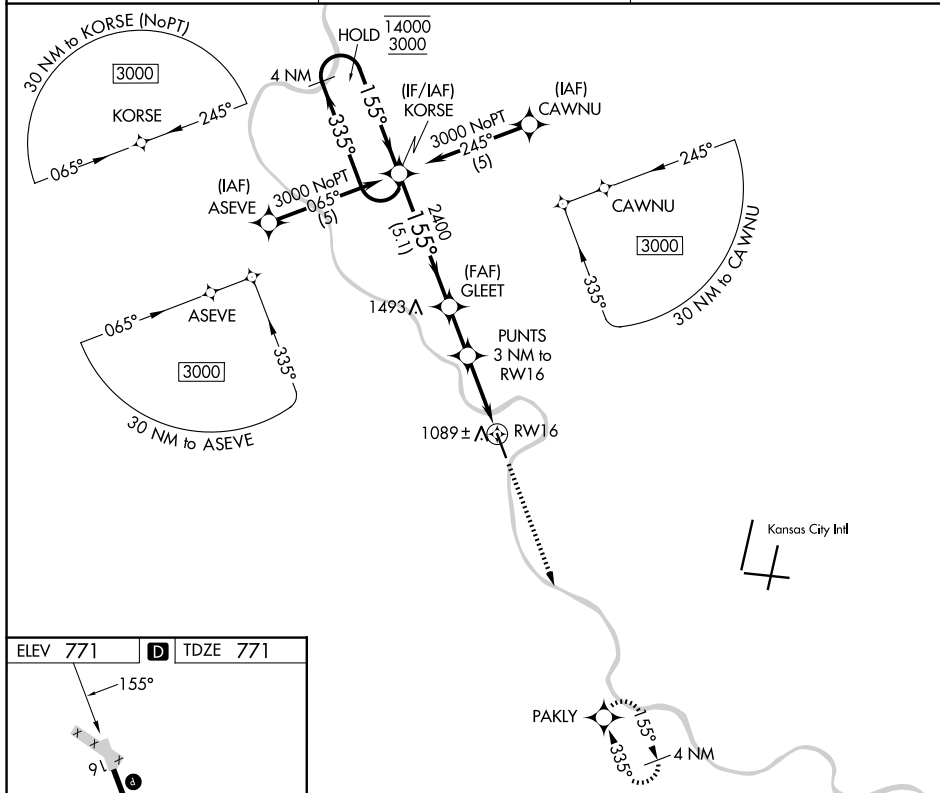
APP CRS	Rwy Ldg	5318
155°	TDZE	771
	Apt Elev	771

RNAV (GPS) RWY 16

SHERMAN AAF (FLV)

RNP APCH - GPS.	MISSED APPROACH: Climb to 3100 direct PAKLY and hold.
<p>▼ Circling NA west of Rwy 16-34. Procedure NA at night. Rwy 16 helicopter visibility reduction below 1 SM NA. Use Kansas City Intl altimeter setting.</p> <p>▲ NA</p>	

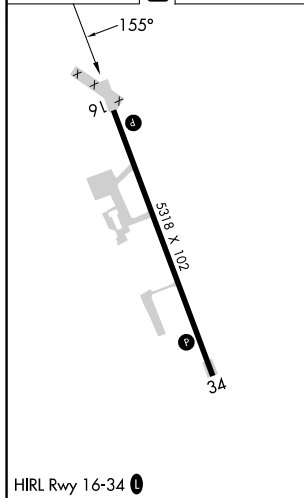
MCI ASOS 128.375	KANSAS CITY APP CON 124.7 284.7	CTAF 126.20
----------------------------	---	-----------------------



NC-2, 14 MAY 2026 to 11 JUN 2026

NC-2, 14 MAY 2026 to 11 JUN 2026

ELEV 771	D	TDZE 771
----------	----------	----------



4 NM Holding Pattern				VGSI and descent angles not coincident (VGSI Angle 3.00/TCH 40).		3100	PAKLY
14000	← 335°	→ 155°	155°	GLEET	3.04°	TCH 50	PUNTS 3 NM to RW16
3000			2400			1780	RW16
			← 5.1 NM	← 1.9 NM	← 3 NM		
CATEGORY	A	B	C	D			
LNAV MDA	1520-1 749 (800-1)	1520-1¼ 749 (800-1¼)	1520-2 749 (800-2)	NA			
CIRCLING	1520-1 749 (800-1)	1520-1¼ 749 (800-1¼)	1520-2¼ 749 (800-2¼)	NA			