

APP CRS 335°	Rwy Ldg 5318
	TDZE 769
	Apt Elev 771

RNAV (GPS) RWY 34

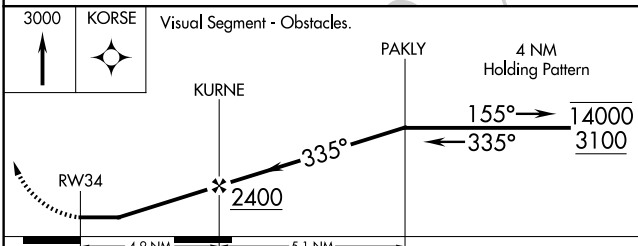
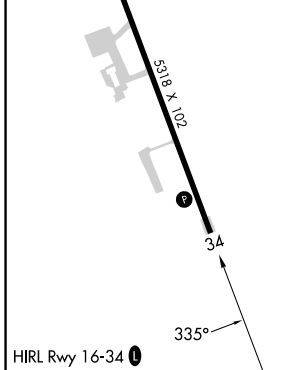
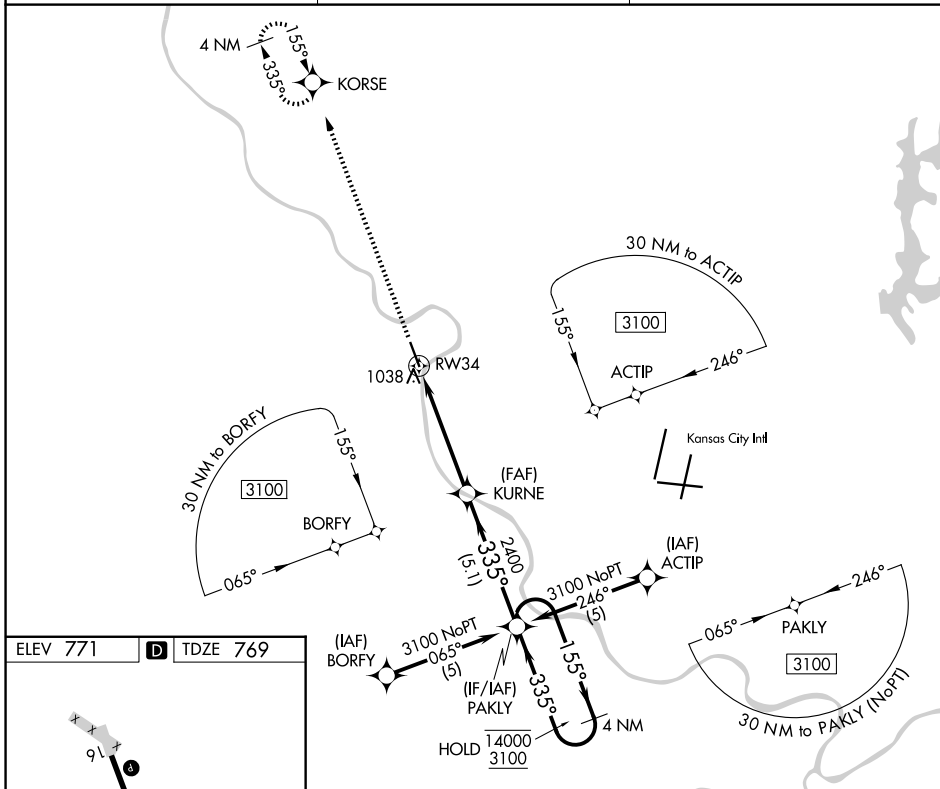
SHERMAN AAF (FLV)

RNP APCH - GPS.

NA Circling NA west of Rwy 16-34. Procedure NA at night. Rwy 34 helicopter visibility reduction below 1 SM NA. Use Kansas City Intl altimeter setting.

MISSED APPROACH: Climb to 3000 direct KORSE and hold.

MCI ASOS 128.375	KANSAS CITY APP CON 124.7 284.7	CTAF 126.2
----------------------------	---	----------------------



CATEGORY	A	B	C	D
LNAV MDA	1560-1 791 (800-1)	1560-1¼ 791 (800-1¼)	1560-2½ 791 (800-2½)	NA
CIRCLING	1560-1 789 (800-1)	1560-1¼ 789 (800-1¼)	1560-2½ 789 (800-2½)	NA

NC-2, 14 MAY 2026 to 11 JUN 2026

NC-2, 14 MAY 2026 to 11 JUN 2026