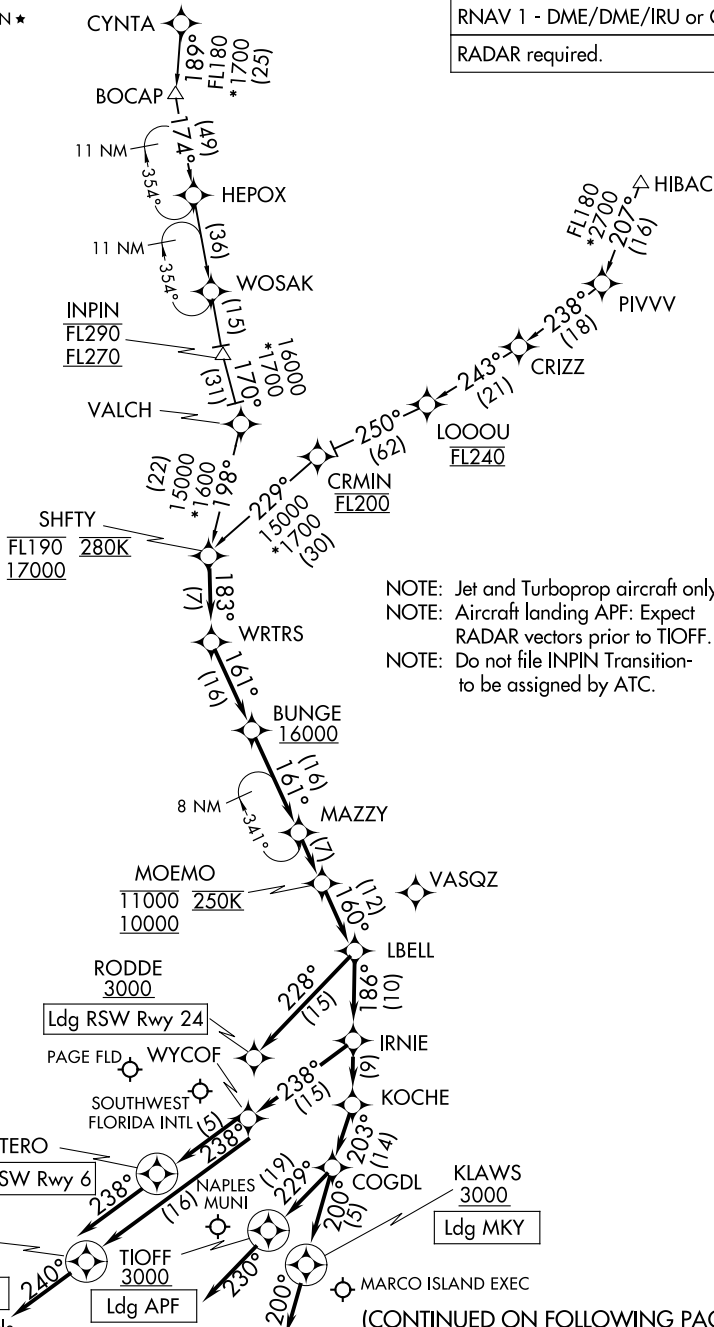


SHFTY SIX ARRIVAL (RNAV)

FORT MYERS, FLORIDA

FORT MYERS APP CON ★
 126.8
 APF ATIS
 134.225
 FMY ATIS
 123.725
 RSW D-ATIS
 124.65

RNAV 1 - DME/DME/IRU or GPS.
 RADAR required.



NOTE: Jet and Turboprop aircraft only.
 NOTE: Aircraft landing APF: Expect RADAR vectors prior to TIOFF.
 NOTE: Do not file INPIN Transition to be assigned by ATC.

NOTE: Chart not to scale.

(CONTINUED ON FOLLOWING PAGE)

SHFTY SIX ARRIVAL (RNAV)

FORT MYERS, FLORIDA

SE-3, 14 MAY 2026 to 11 JUN 2026

SE-3, 14 MAY 2026 to 11 JUN 2026

ARRIVAL ROUTE DESCRIPTION

RSW: From SHFTY on track 183° to WRTRS, then on track 161° to cross BUNGE at or above 16000, then on track 161° to MAZZY, then on track 161° to cross MOEMO between 10000 and 11000 and at 250K, then on track 160° to LBELL.

LANDING RSW RUNWAY 6: From LBELL on track 186° to IRNIE, then on track 238° to WYCOF, then on track 238° to STERO, then on track 238°. Expect RADAR vectors to final approach course.

LANDING RSW RUNWAY 24: From LBELL on track 228° to cross RODDE at or above 3000. Expect RNP or GPS RWY 24 approach.

LANDING APF: From SHFTY on track 183° to WRTRS, then on track 161° to cross BUNGE at or above 16000, then on track 161° to MAZZY, then on track 161° to cross MOEMO between 10000 and 11000 and at 250K, then on track 160° to LBELL, then on track 186° to IRNIE, then on track 186° to KOICHE, then on track 203° to COGDL, then on track 229° to cross TIOFF at or above 3000, then on track 230°. Expect RADAR vectors to final approach course.

LANDING FMY: From SHFTY on track 183° to WRTRS, then on track 161° to cross BUNGE at or above 16000, then on track 161° to MAZZY, then on track 161° to cross MOEMO between 10000 and 11000 and at 250K, then on track 160° to LBELL, then on track 186° to IRNIE, then on track 238° to WYCOF, then on track 238° to cross PONTY at or above 4000, then on track 240°. Expect RADAR vectors to final approach course.

LANDING MKY: From SHFTY on track 183° to WRTRS, then on track 161° to cross BUNGE at or above 16000, then on track 161° to MAZZY, then on track 161° to cross MOEMO between 10000 and 11000 and at 250K, then on track 160° to LBELL, then on track 186° to IRNIE, then on track 186° to KOICHE, then on track 203° to COGDL, then on track 200° to cross KLAWNS at or above 3000, then on track 200°. Expect RADAR vectors to final approach course.

CYN TA TRANSITION (CYN TA.SHFTY6)

HIBAC TRANSITION (HIBAC.SHFTY6)

INPIN TRANSITION (INPIN.SHFTY6)

SE-3, 14 MAY 2026 to 11 JUN 2026

SE-3, 14 MAY 2026 to 11 JUN 2026