

FORT RILEY, KANSAS

# ILS or LOC RWY 4

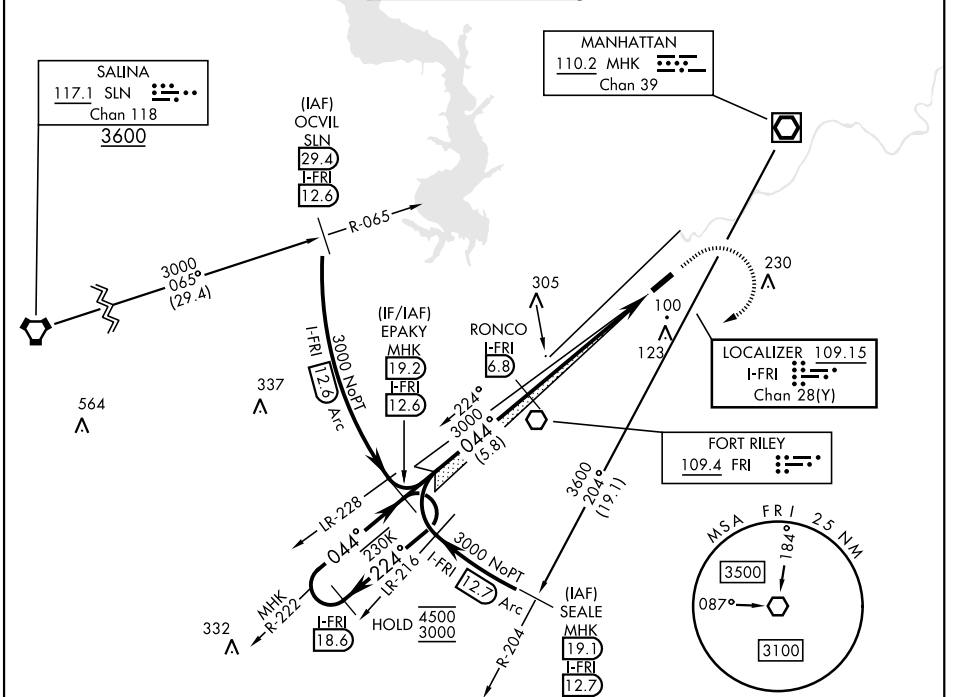
LOC/DME I-FRI <b>109.15</b> Chan <b>28(Y)</b>	APCH CRS <b>044°</b>	Rwy Ldg THRE <b>1065</b> Arprt Elev <b>1066</b>
---	-------------------------	---

[USA]

MARSHALL AAF (KFRI)

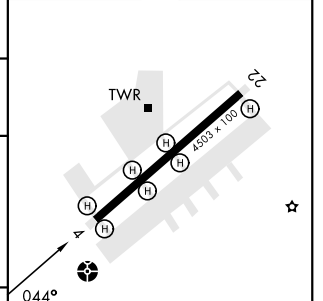
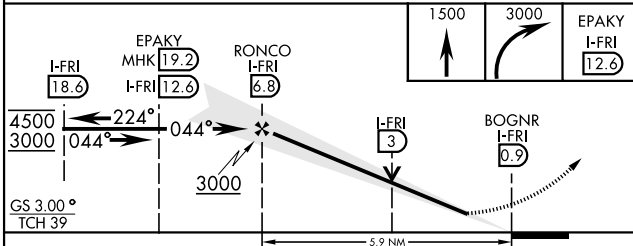
RADAR required	ODALS	MISSED APPROACH: Climb to 1500 then climbing right turn to 3000 heading 230° expect radar vectors to EPAKY and hold.
----------------	-------	--

ATIS ★ <b>121.025</b>	APP CON <b>121.25 269.05</b>	TOWER ★ <b>126.2 (CTAF) 0 248.65</b>	GND CON <b>140.20 229.4</b>	CLNC DEL <b>119.65</b>
--------------------------	---------------------------------	---	--------------------------------	---------------------------



ELEV	1066	THRE	1065
------	------	------	------

EMERG SAFE ALT 100 NM 4000



CATEGORY	A	B	C	D
S-ILS 4	1341-1		276	(300-1)
S-LOC 4	1800-1	735 (800-1)	1800-2	735 (800-2)
CIRCLING*	1800-1	734 (800-1)	734 (800-2)	834 (900-2¾)

HIRL Rwy 4-22 0

FORT RILEY, KANSAS

39° 03' N - 96° 46' E

MARSHALL AAF (KFRI)

Orig 20FEB25

# ILS or LOC RWY 4

NC-2, 14 MAY 2026 to 11 JUN 2026

NC-2, 14 MAY 2026 to 11 JUN 2026