

RNAV (GPS) RWY 4

APCH CRS	Rwy Idg	4503
044°	TDZE	1066
	Arpt Elev	1066

[USA]

MARSHALL AAF (KFRI)

RNP APCH - GPS

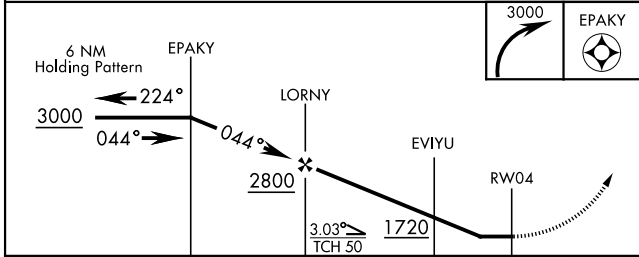
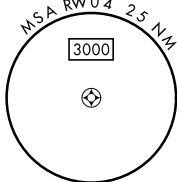
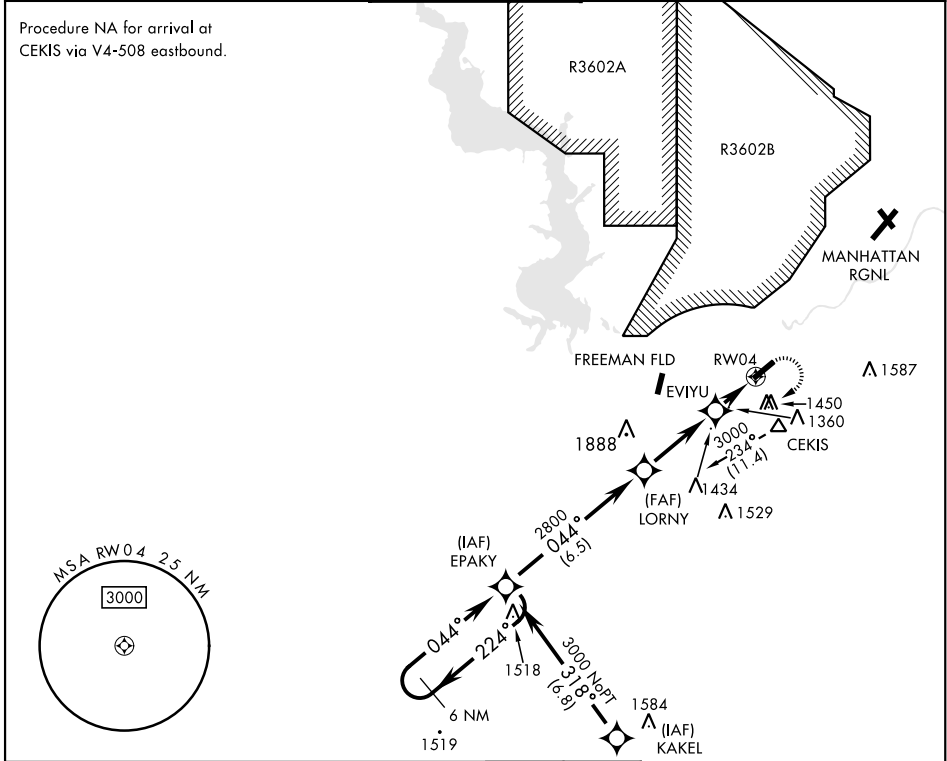
ODALS

MISSED APPROACH: Climbing right turn to 3000 direct EPAKY and hold.

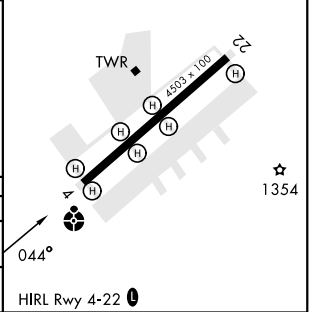
- ▼ * When ALS inop increase CAT CD vis to 1¾ miles.
- ** Circling not authorized NW of Rwy 4-22.
- ▲ NA Visibility reduction by helicopters NA

ATIS ★	APP CON	TOWER ★	GND CON	CLNC DEL
121.025	121.25 269.05	126.2 (CTAF) 0 248.65	140.20 229.4	119.65

Procedure NA for arrival at CEKIS via V4-508 eastbound.



ELEV	1066	TDZE	1066
------	------	------	------



CATEGORY	A	B	C	D
LNAV MDA *	1660-1 594 (600-1)	1660-1 594 (600-1)	1660-1 594 (600-1)	1660-1 594 (600-1)
CIRCLING **	1700-1 634 (700-1)	1760-1 694 (700-1)	1760-2 694 (700-2)	1900-2 834 (900-2)

RNAV (GPS) RWY 4

NC-2, 14 MAY 2026 to 11 JUN 2026

NC-2, 14 MAY 2026 to 11 JUN 2026