

VOR RWY 4

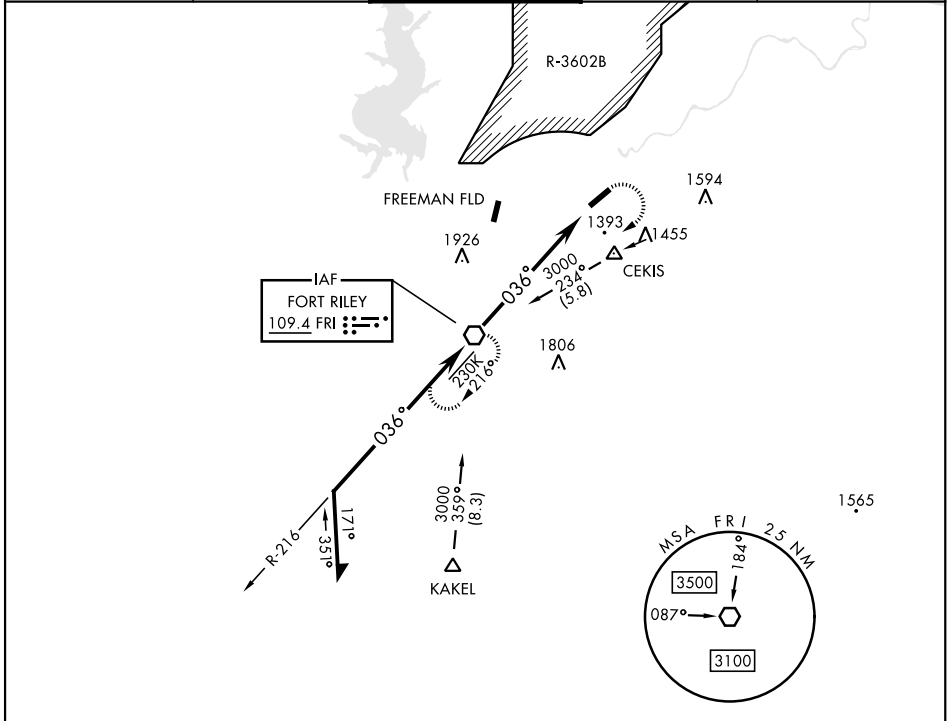
VOR FRI 109.4	APCH CRS 036°	Rwy ldg 4503 TDZE 1066 Arprt Elev 1066
-------------------------	-------------------------	---

[USA]

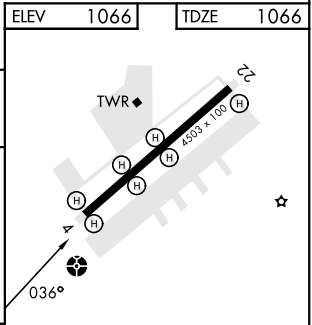
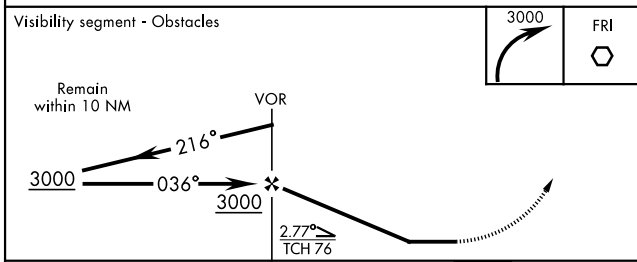
MARSHALL AAF (KFRI)

<p>▼ * Circling not authorized NW of Rwy 4-22. Rwy 4 helicopter visibility reduction below 3/4 mile not authorized.</p>	ODALS	MISSED APPROACH: Climbing right turn to 3000 direct FRI VOR and hold.

ATIS ★ 121.025	APP CON 121.25 269.05	TOWER ★ 126.2 (CTAF) 248.65	GND CON 140.20 229.4	CLNC DEL 119.65
--------------------------	---------------------------------	---------------------------------------	--------------------------------	---------------------------



ELEV	1066	TDZE	1066
------	------	------	------



CATEGORY	A	B	C	D
S-4	1800-1 734 (800-1)		1800-2 734 (800-2)	
CIRCLING *	1800-1 734 (800-1)		1800-2 734 (800-2)	1900-2 834 (900-2 3/4)

HIRL Rwy 4-22

FAF to MAP 6.3 NM					
Knots	60	90	120	150	180
Min:Sec	6:18	4:12	3:09	2:31	2:06

VOR RWY 4

NC-2, 14 MAY 2026 to 11 JUN 2026

NC-2, 14 MAY 2026 to 11 JUN 2026