

| | | |
|--|------------------------|--|
| WAAS CH 93609 W05A | APP CRS 050° | Rwy Ldg 11981 TDZE 815 Apt Elev 815 |
|--|------------------------|--|

RNAV (GPS) RWY 5

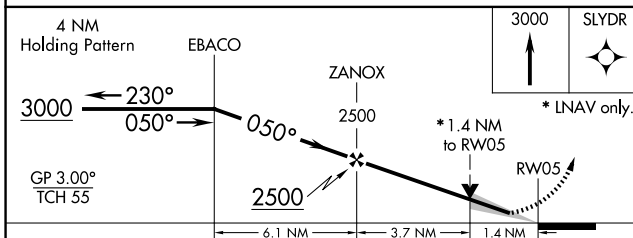
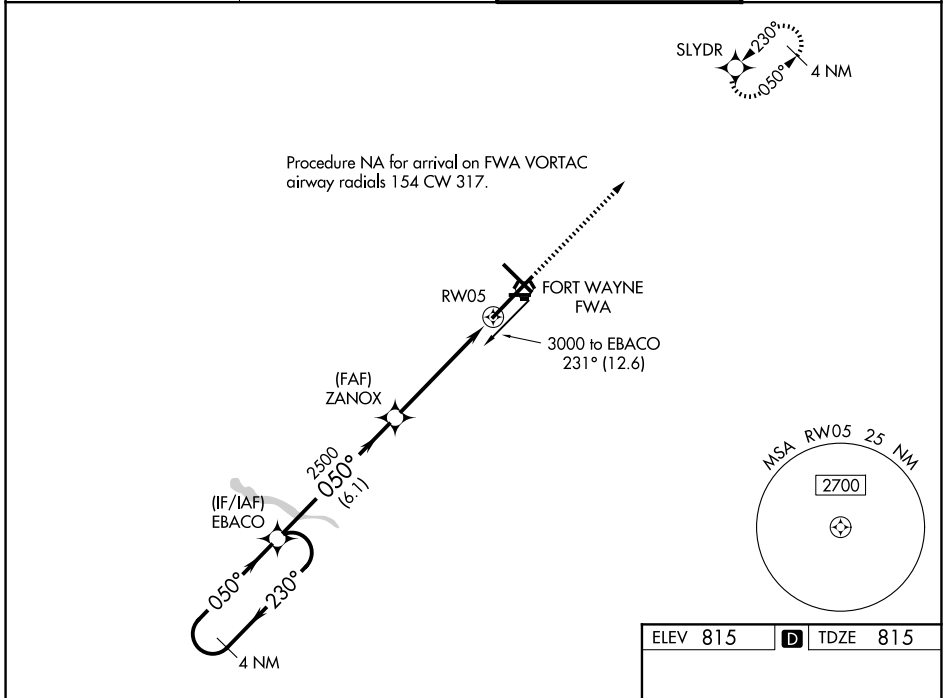
FORT WAYNE INTL (FWA)

ASR For uncompensated Baro-VNAV systems, procedure NA below -16°C (4°F) or above 47°C (116°F). DME/DME RNP-0.3 NA. For inop ALS, increase LPV Cat E visibility to RVR 4000, LNAV/VNAV all Cats visibility to 1½ SM and LNAV Cat C/D/E visibility to 1¾ SM.

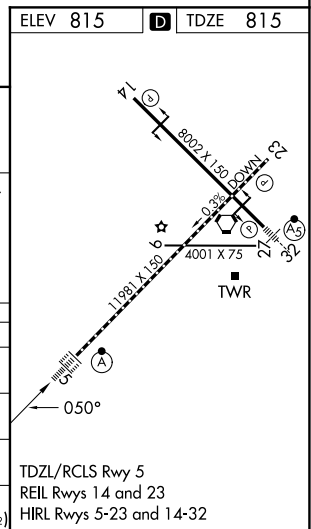
ALSIF-2

MISSED APPROACH:
Climb to 3000 direct SLYDR and hold.

| | | | |
|-------------------------------|--|--|-------------------------------|
| ATIS 121.25 360.825 | FORT WAYNE APP CON 127.2 284.6 | FORT WAYNE TOWER 119.1 269.325 | GND CON 121.9 348.6 |
|-------------------------------|--|--|-------------------------------|



| CATEGORY | A | B | C | D | E |
|--------------|----------------------|-------------|-------------------------|-------------------------|-------------------------|
| LPV DA | 1065/18 250 (300-½) | | | | |
| LNAV/VNAV DA | 1275/60 460 (500-1¼) | | | | |
| LNAV MDA | 1300/24 | 485 (500-½) | 1300/50 | | 485 (500-1) |
| CIRCLING | 1300-1 | 485 (500-1) | 1420-1¾ 605 (700-1¾) | 1520-2¼ 705 (800-2¼) | 1520-2½ 705 (800-2½) |



EC-2, 14 MAY 2026 to 11 JUN 2026

EC-2, 14 MAY 2026 to 11 JUN 2026