

VORTAC FWA 117.8 Chan 125	APP CRS 054°	Rwy Ldg TDZE 815 Apt Elev 815
---	------------------------	---

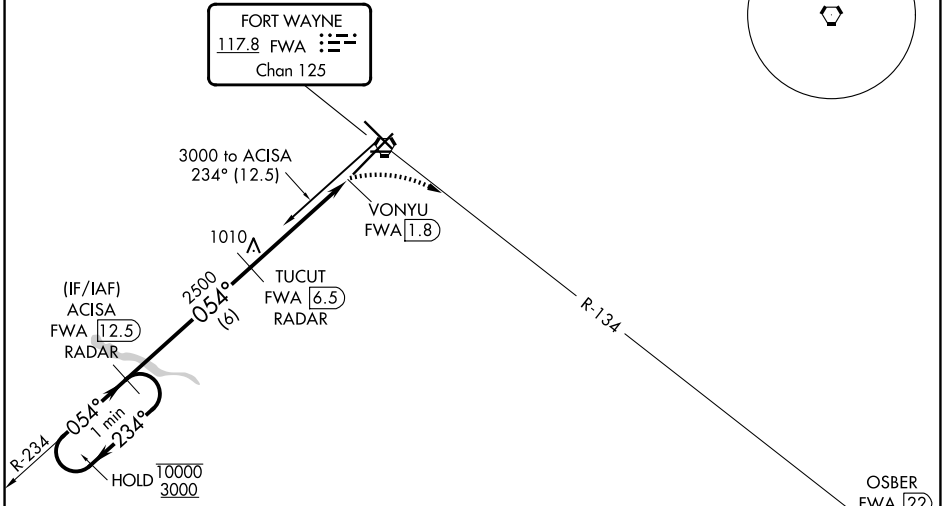
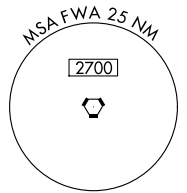
VOR or TACAN RWY 5

FORT WAYNE INTL (FWA)

DME required. ▲ For inop ALS, increase S-5 Cats C/D/E visibility to 1½ SM. ASR	ALS-F-2 A	MISSED APPROACH: Climbing right turn to 3000 on FWA R-134 to OSBER/FWA 22 DME and hold.
--	--------------	---

ATIS 121.25 360.825	FORT WAYNE APP CON 127.2 284.6	FORT WAYNE TOWER 119.1 269.325	GND CON 121.9 348.6
-------------------------------	--	--	-------------------------------

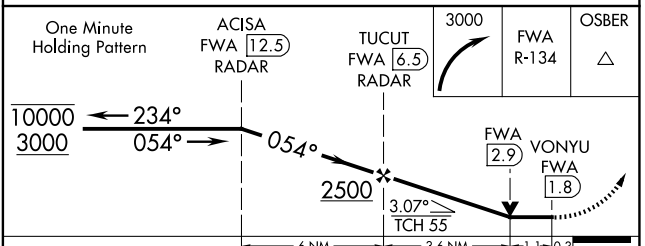
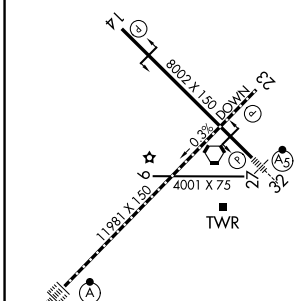
Procedure NA for arrival on FWA VORTAC
airway radials 198 CW 285.



EC-2, 14 MAY 2026 to 11 JUN 2026

EC-2, 14 MAY 2026 to 11 JUN 2026

ELEV 815	D	TDZE 815
HIRL Rwy 5-23 and 14-32 REIL Rwy 14 and 23 TDZL/RCLS Rwy 5		



One Minute Holding Pattern	ACISA FWA 12.5 RADAR	TUCUT FWA 6.5 RADAR	3000	FWA R-134	OSBER
10000 ← 234°	→ 054° →	054°	2500	FWA 2.9	VONYU FWA 1.8
3000			3.07° TCH 55		
			6 NM	3.6 NM	1.1 0.3
CATEGORY	A	B	C	D	E
S-5	1320/24	505 (600-½)	1320/55	505 (600-1)	
CIRCLING	1320-1	505 (600-1)	1360-1½ 545 (600-1½)	1520-2¼ 705 (800-2¼)	1520-2½ 705 (800-2½)