

APP CRS	Rwy Ldg	2925
056°	TDZE	834
	Apt Elev	836

RNAV (GPS) RWY 5

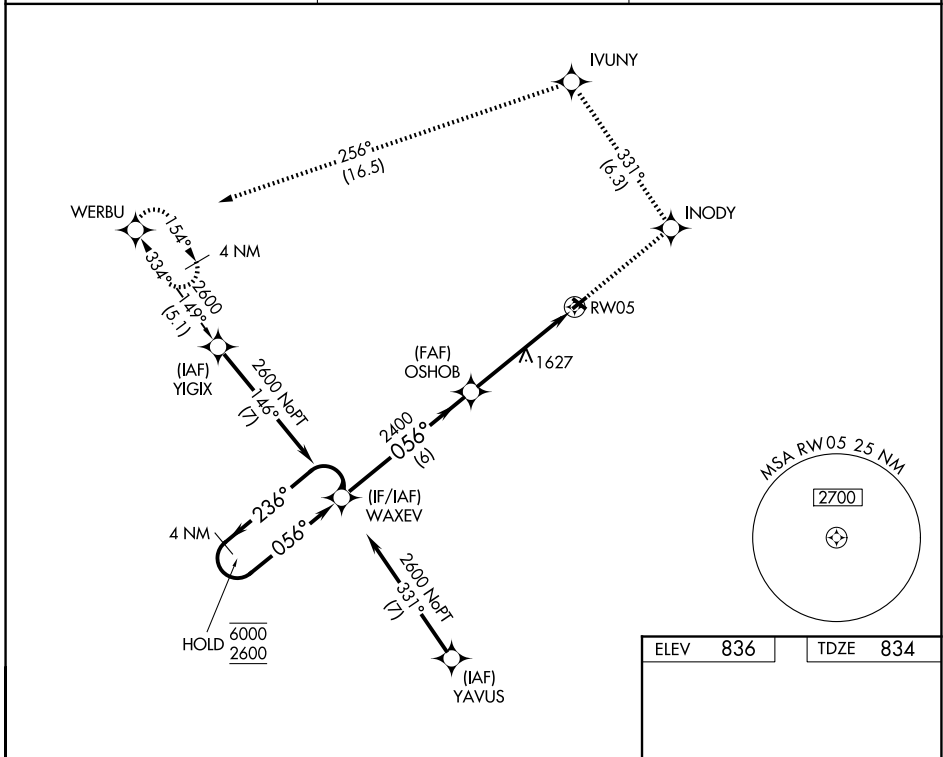
SMITH FLD (SMD)

RNP APCH - GPS.

▼ Rwy 5 helicopter visibility reduction below ¾ NA. Circling to Rwy 13/31
 ▲ NA NA at night. When local altimeter setting not received, use FWA altimeter
 ❄️ -21°C setting and increase all MDAs 40 feet. VDP NA with FWA altimeter setting.

MISSED APPROACH: Climb to 2700 direct INODY and on track 331° to IVUNY and on track 256° to WERBU and hold.

AWOS-3 124.55	FORT WAYNE APP CON 127.2 284.6	UNICOM 122.8 (CTAF) 0
-------------------------	--	---------------------------------



EC-2, 14 MAY 2026 to 11 JUN 2026

EC-2, 14 MAY 2026 to 11 JUN 2026

ELEV	836	TDZE	834
------	------------	------	------------

