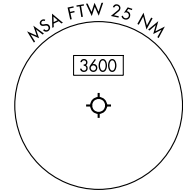
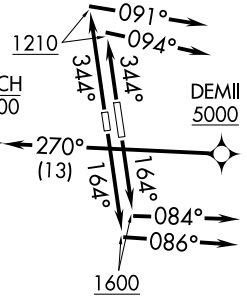
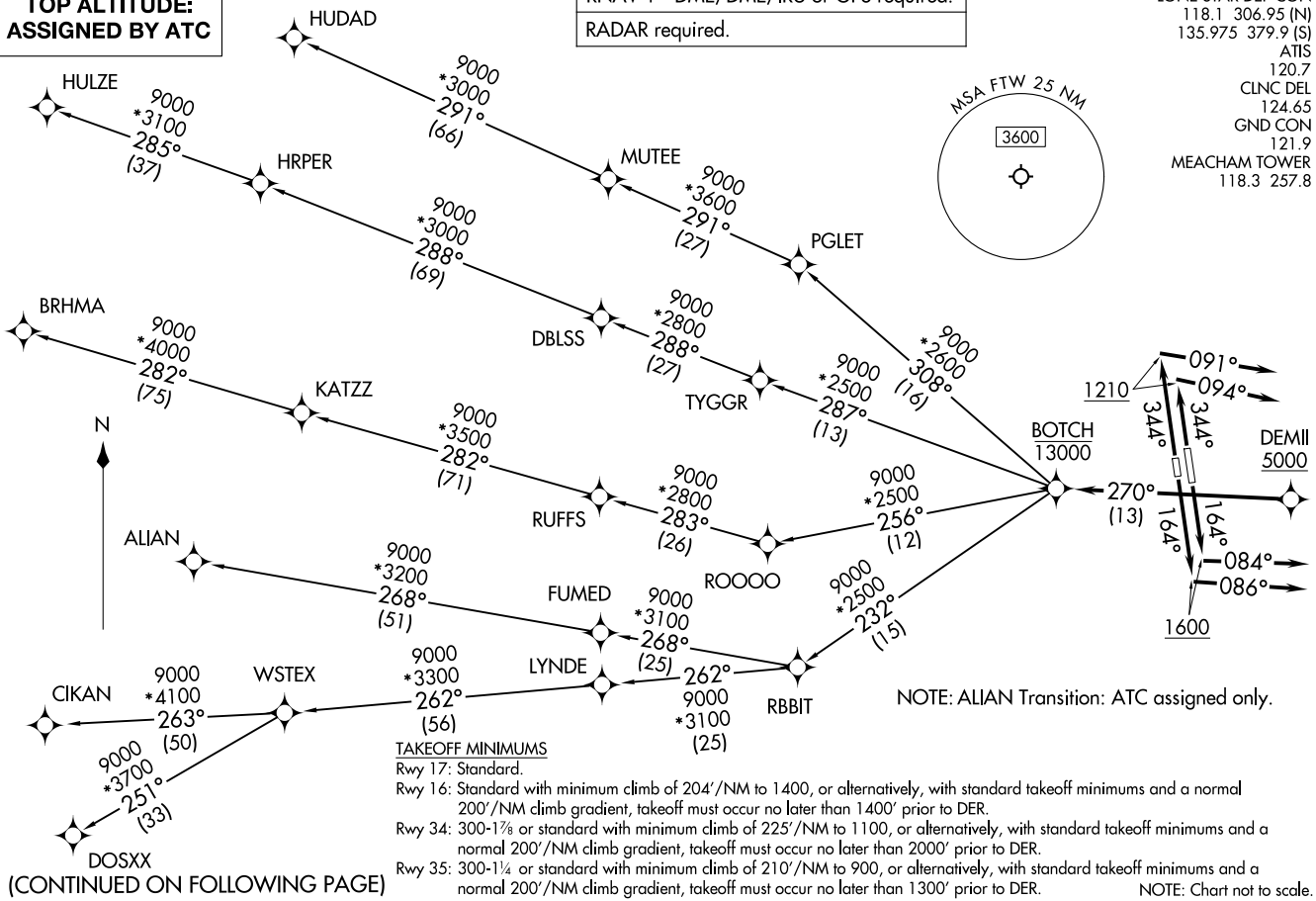


RNAV 1 - DME/DME/IRU or GPS required.  
RADAR required.

LONE STAR DEP CON  
118.1 306.95 (N)  
135.975 379.9 (S)  
ATIS  
120.7  
CLNC DEL  
124.65  
GND CON  
121.9  
MEACHAM TOWER  
118.3 257.8



TOP ALTITUDE:  
ASSIGNED BY ATC



NOTE: ALIAN Transition: ATC assigned only.

**TAKEOFF MINIMUMS**

- Rwy 17: Standard.
- Rwy 16: Standard with minimum climb of 204'/NM to 1400, or alternatively, with standard takeoff minimums and a normal 200'/NM climb gradient, takeoff must occur no later than 1400' prior to DER.
- Rwy 34: 300-1 1/2 or standard with minimum climb of 225'/NM to 1100, or alternatively, with standard takeoff minimums and a normal 200'/NM climb gradient, takeoff must occur no later than 2000' prior to DER.
- Rwy 35: 300-1 1/4 or standard with minimum climb of 210'/NM to 900, or alternatively, with standard takeoff minimums and a normal 200'/NM climb gradient, takeoff must occur no later than 1300' prior to DER.

NOTE: Chart not to scale.

(CONTINUED ON FOLLOWING PAGE)

BOTCH TWO DEPARTURE (RNAV)  
(BOTCH2.BOTCH) 14MAY26

FORT WORTH, TEXAS  
FORT WORTH MEACHAM INTL (FTW)

(BOTCH2.BOTCH) 26134  
BOTCH TWO DEPARTURE (RNAV)

AL-159 (FAA)  
FORT WORTH MEACHAM INTL (FTW)  
FORT WORTH, TEXAS

# BOTCH TWO DEPARTURE (RNAV)



## DEPARTURE ROUTE DESCRIPTION

TAKEOFF RUNWAY 16: Climb on heading 164° to 1600, then on heading 084° or as assigned by ATC, for vectors to cross DEMII at or above 5000, thence. . .

TAKEOFF RUNWAY 17: Climb on heading 164° to 1600, then on heading 086° or as assigned by ATC, for vectors to cross DEMII at or above 5000, thence. . .

TAKEOFF RUNWAY 34: Climb on heading 344° to 1210, then on heading 094° or as assigned by ATC, for vectors to cross DEMII at or above 5000, thence. . .

TAKEOFF RUNWAY 35: Climb on heading 344° to 1210, then on heading 091° or as assigned by ATC, for vectors to cross DEMII at or above 5000, thence. . .

. . .on track 270° to cross BOTCH at or below 13000, then on (transition). Maintain ATC assigned altitude, expect filed altitude 10 minutes after departure.

ALIAN TRANSITION (BOTCH2.ALIAN)

BRHMA TRANSITION (BOTCH2.BRHMA)

CIKAN TRANSITION (BOTCH2.CIKAN)

DOSXX TRANSITION (BOTCH2.DOSXX)

HUDAD TRANSITION (BOTCH2.HUDAD)

HULZE TRANSITION (BOTCH2.HULZE)

WSTEX TRANSITION (BOTCH2.WSTEX)

SC-2, 14 MAY 2026 to 11 JUN 2026

SC-2, 14 MAY 2026 to 11 JUN 2026