

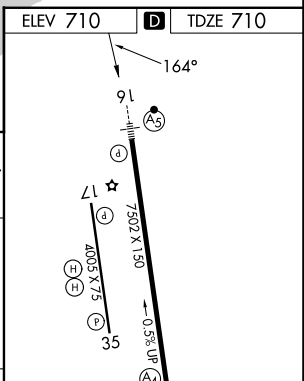
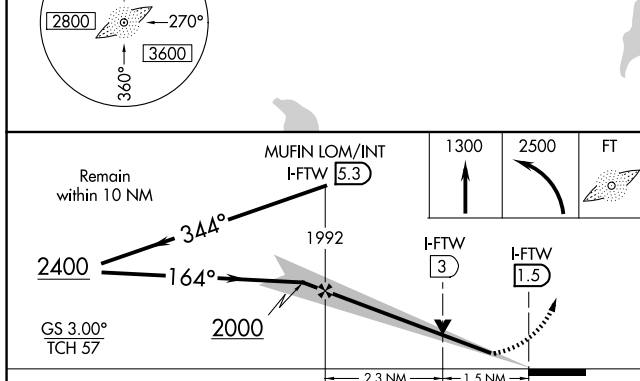
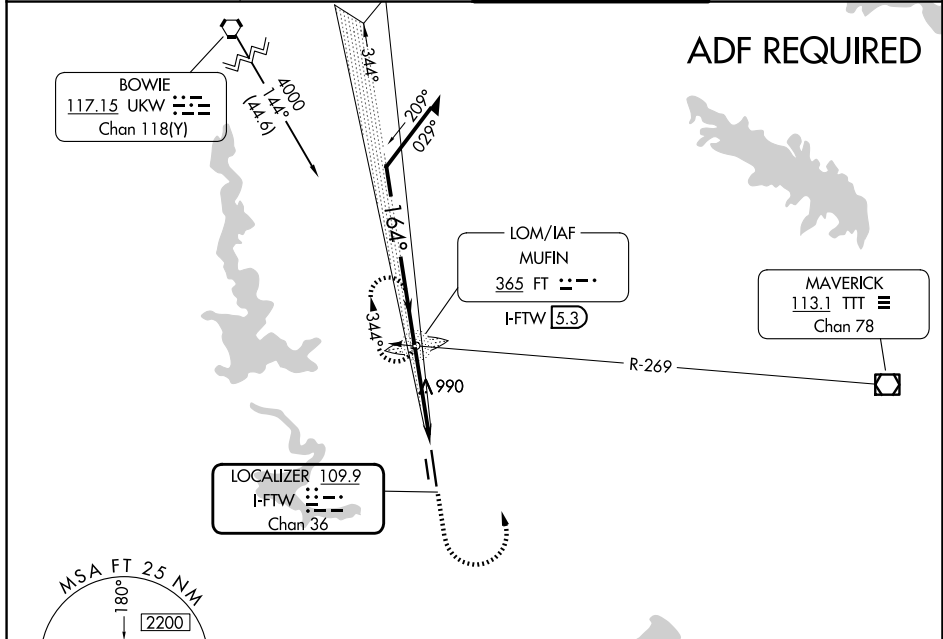
LOC I-FTW 109.9 Chan 36	APP CRS 164°	Rwy Ldg 7502 TDZE 710 Apt Elev 710
---	------------------------	---

ILS or LOC RWY 16

FORT WORTH MEACHAM INTL (FTW)

<p>*RVR 1800 authorized with the use of FD or AP or HUD to DA.</p>	<p>MALS R</p>	<p>MISSED APPROACH: Climb to 1300 then climbing left turn to 2500 direct FT LOM and hold, continue climb-in-hold to 2500.</p>

<p>ATIS 120.7</p>	<p>LONE STAR APP CON 118.1 306.95 (N) 135.975 379.9 (S)</p>	<p>MEACHAM TOWER 118.3 257.8</p>	<p>GND CON 121.9</p>
------------------------------	---	---	---------------------------------



CATEGORY	A	B	C	D
S- ILS 16*	910/24 200 (200-1/2)			
S- LOC 16	1240/24 530 (600-1/2)	1240/50 530 (600-1)	1240/60 530 (600-1 1/4)	
CIRCLING	1260-1 550 (600-1)	1280-1 570 (600-1)	1340-1 3/4 630 (700-1 3/4)	1500-2 1/2 790 (800-2 1/2)

HIRL Rwy 16-34	FAF to MAP 3.8 NM					
MIRL Rwy 17-35						
	Knots	60	90	120	150	180
	Min:Sec	3:48	2:32	1:54	1:31	1:16

SC-2, 14 MAY 2026 to 11 JUN 2026

SC-2, 14 MAY 2026 to 11 JUN 2026