

WAAS CH <b>42612</b> <b>W16A</b>	APP CRS <b>164°</b>	Rwy Ldg <b>7502</b> TDZE <b>710</b> Apt Elev <b>710</b>
--	------------------------	---

# RNAV (GPS) RWY 16

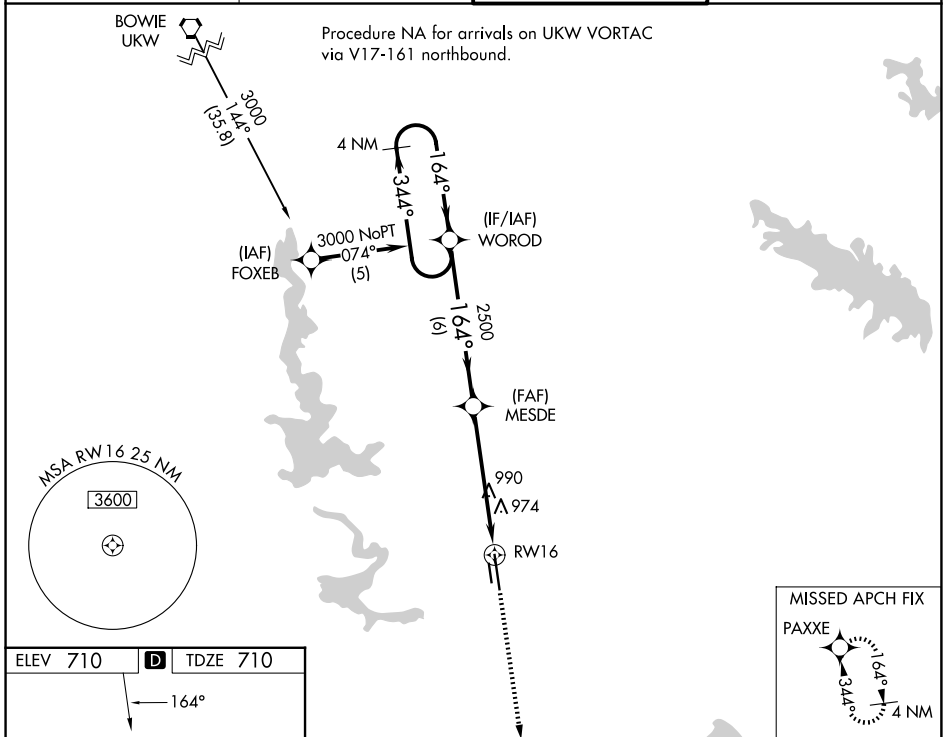
FORT WORTH MEACHAM INTL (FTW)

**⚠** For uncompensated Baro-VNAV systems, LNAV/VNAV NA below -16°C (4°F) or above 47°C (116°F). DME/DME RNP-0.3 NA.  
**⚠** \*\* RVR 1800 authorized with use of FD or AP or HUD to DA.

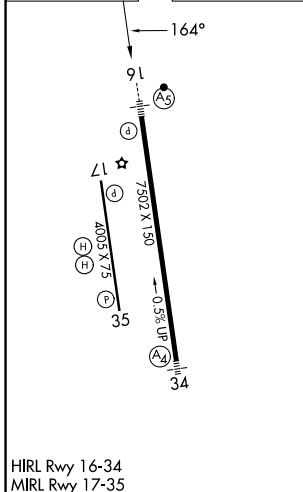


MISSED APPROACH: Climb to 3000 direct PAXXE and hold.

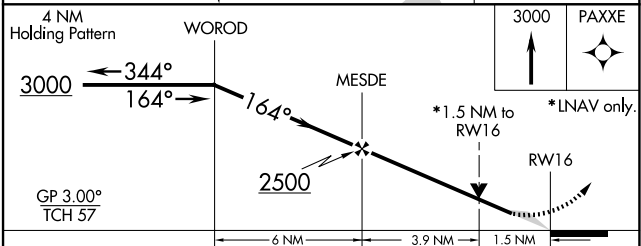
ATIS <b>120.7</b>	LONE STAR APP CON <b>118.1 306.95 (N)</b> <b>135.975 379.9 (S)</b>	MEACHAM TOWER <b>118.3 257.8</b>	GND CON <b>121.9</b>
----------------------	--	-------------------------------------	-------------------------



ELEV 710	<b>D</b>	TDZE 710
----------	----------	----------



HIRL Rwy 16-34  
MIRL Rwy 17-35



CATEGORY	A	B	C	D
LPV DA **		910/24	200 (200-1/2)	
LNAV/VNAV DA		1284-1 1/2	574 (600-1 1/2)	
LNAV MDA	1240/24	530 (600-1/2)	1240/50 530 (600-1)	1240/60 530 (600-1 1/4)
CIRCLING	1260-1 550 (600-1)	1280-1 570 (600-1)	1340-1 3/4 630 (700-1 3/4)	1500-2 1/2 790 (800-2 1/2)

SC-2, 14 MAY 2026 to 11 JUN 2026

SC-2, 14 MAY 2026 to 11 JUN 2026