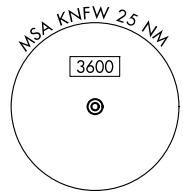
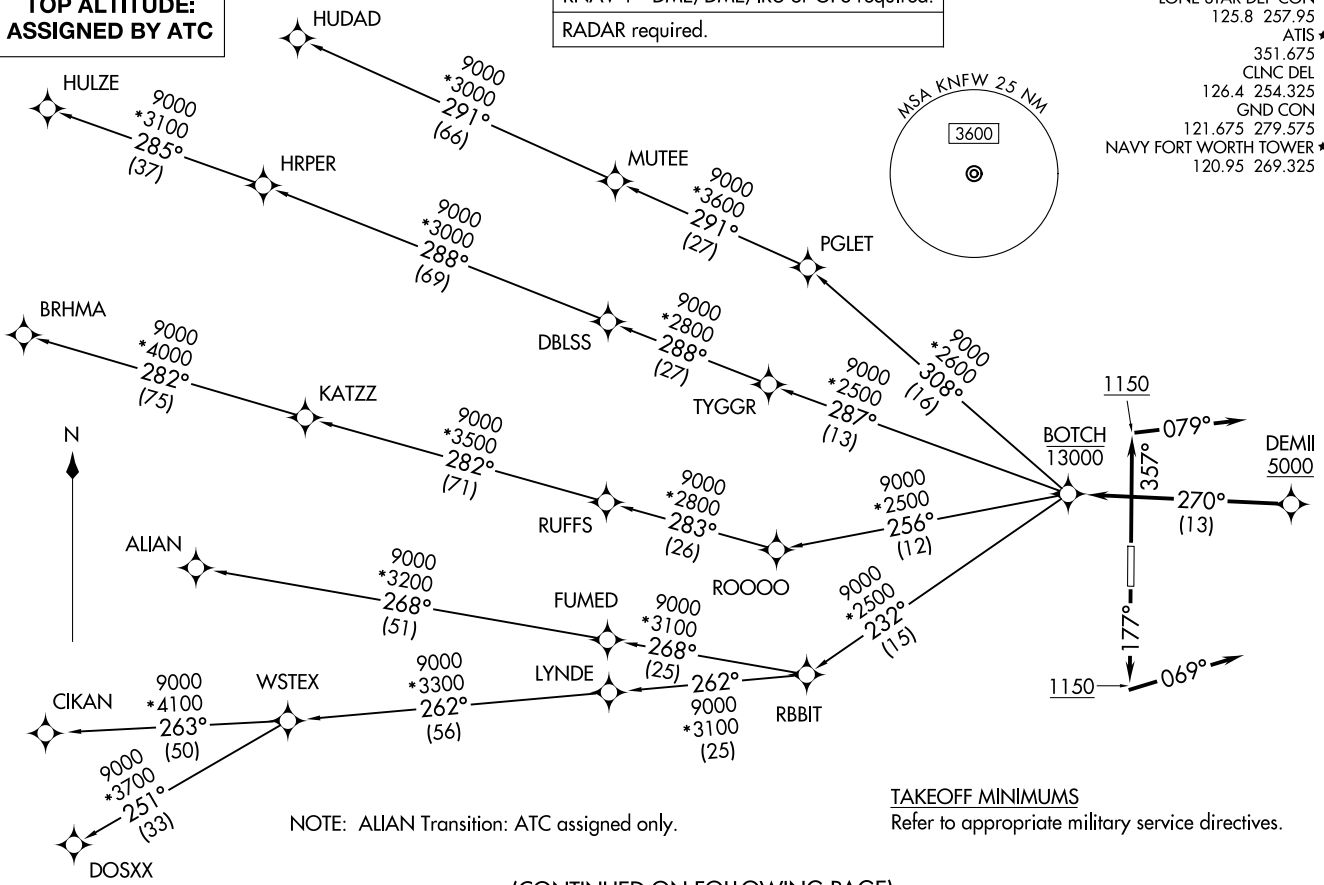


RNAV 1 - DME/DME/IRU or GPS required.
RADAR required.

LONE STAR DEP CON
125.8 257.95
ATIS ★
351.675
CLNC DEL
126.4 254.325
GND CON
121.675 279.575
NAVY FORT WORTH TOWER ★
120.95 269.325

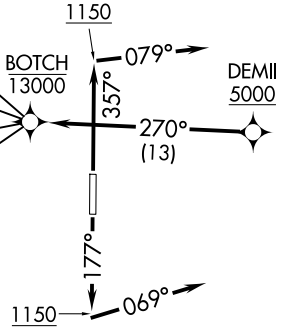


TOP ALTITUDE:
ASSIGNED BY ATC



NOTE: ALIAN Transition: ATC assigned only.

TAKEOFF MINIMUMS
Refer to appropriate military service directives.



(CONTINUED ON FOLLOWING PAGE)

NOTE: Chart not to scale.

BOTCH TWO DEPARTURE (RNAV)
BOTCH2.BOTCH 14MAY26

FORT WORTH, TEXAS
FORT WORTH NAS JRB (CARSWELL FLD) (KNTW)

(BOTCH2.BOTCH) 26134
BOTCH TWO DEPARTURE (RNAV)

AL-160 (FAA)
FORT WORTH NAS JRB (CARSWELL FLD) (KNTW)
FORT WORTH, TEXAS

BOTCH TWO DEPARTURE (RNAV)



DEPARTURE ROUTE DESCRIPTION

TAKEOFF RUNWAY 18: Climb on heading 177° to 1150, then on heading 069° or as assigned by ATC, for vectors to cross DEMII at or above 5000, thence. . .

TAKEOFF RUNWAY 36: Climb on heading 357° to 1150, then on heading 079° or as assigned by ATC, for vectors to cross DEMII at or above 5000, thence. . .

. . . on track 270° to cross BOTCH at or below 13000, then on (transition). Maintain ATC assigned altitude, expect filed altitude 10 minutes after departure.

ALIAN TRANSITION (BOTCH2.ALIAN)

BRHMA TRANSITION (BOTCH2.BRHMA)

CIKAN TRANSITION (BOTCH2.CIKAN)

DOSXX TRANSITION (BOTCH2.DOSXX)

HUDAD TRANSITION (BOTCH2.HUDAD)

HULZE TRANSITION (BOTCH2.HULZE)

WSTEX TRANSITION (BOTCH2.WSTEX)

SC-2, 14 MAY 2026 to 11 JUN 2026

SC-2, 14 MAY 2026 to 11 JUN 2026