

DALLAS FOUR DEPARTURE (DALL4 TTT) 27NOV25  
FORT WORTH, TEXAS  
FORT WORTH NAS JRB (CARSWELL FLD) (KNFW)

LONE STAR DEP CON  
125.8 257.95  
ATIS ★  
351.675  
CLNC DEL  
126.4 254.325  
GND CON  
121.675 279.575  
NAVY FORT WORTH TOWER ★  
120.95 269.325

RADAR and DME required.

**TOP ALTITUDE:  
ASSIGNED BY ATC**

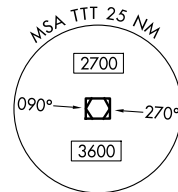
BONHAM  
114.6 BYP  
Chan 93

MAVERICK  
113.1 TTT  
Chan 78

GREGG COUNTY  
112.9 GGG  
Chan 76

LITTLE ROCK  
115.1 LIT  
Chan 98

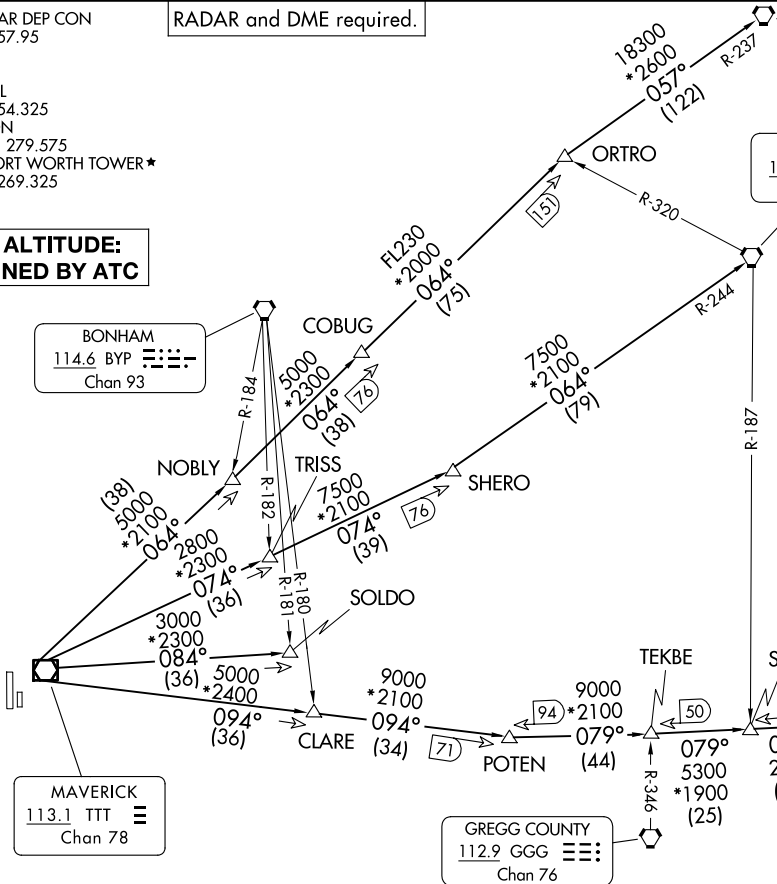
TEXARKANA  
116.3 TXK  
Chan 110



**TAKEOFF MINIMUMS**  
Refer to appropriate military service directives.

NOTE: BELCHER Transition: For aircraft inbound to the JAN, MLU, and SHV terminal areas only.  
NOTE: SOLDO Transition: ATC assigned.

BELCHER  
117.4 EIC  
Chan 121



(CONTINUED ON FOLLOWING PAGE)

NOTE: Chart not to scale.

(DALL4 TTT) 25331  
DALLAS FOUR DEPARTURE  
FORT WORTH NAS JRB (CARSWELL FLD) (KNFW)  
FORT WORTH, TEXAS  
AL-160 (FAA)



DEPARTURE ROUTE DESCRIPTION

Fly assigned heading for RADAR vectors to appropriate route. Maintain ATC assigned altitude.

BELCHER TRANSITION (DALL4.EIC): From over TTT VOR/DME on TTT R-094 to POTEN, then on EIC R-259 to EIC VORTAC.

LITTLE ROCK TRANSITION (DALL4.LIT): From over TTT VOR/DME on TTT R-064 to ORTRO, then on LIT R-237 to LIT VORTAC.

SOLDO TRANSITION (DALL4.SOLDO): From over TTT VOR/DME on TTT R-084 to SOLDO.

TEXARKANA TRANSITION (DALL4.TXK): From over TTT VOR/DME on TTT R-074 to SHERO, then on TXK R-244 to TXK VORTAC.

SC-2, 14 MAY 2026 to 11 JUN 2026

SC-2, 14 MAY 2026 to 11 JUN 2026