

HI-TACAN Y RWY 18

TACAN NFW Chan 24	APCH CRS 172°	Rwy ldg 11,999 TDZE 636 Arprt Elev 650	[USN]	FORT WORTH NAS JRB (CARSWELL FLD) (KNFW)
----------------------	------------------	--	-------	--

FUZ VORTAC or RADAR required.

*Circling not authorized E of Rwy 18-36.

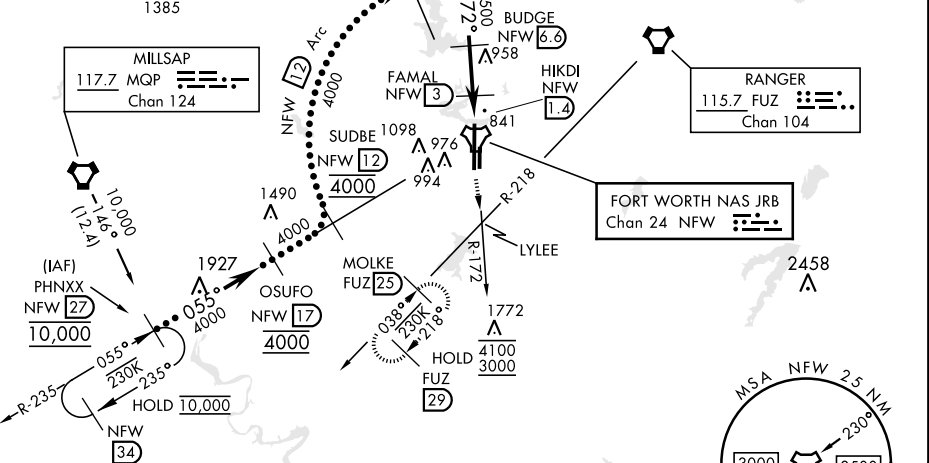
MISSED APPROACH: Climb to 3000 direct LYLEE to intercept FUZ VORTAC R-218 to MOLKE and hold.

ATIS ★ 351.675	LONE STAR APP CON 125.8 257.95	NAVY FORT WORTH TOWER★ 120.95 269.325	GND CON 121.675 279.575	ASR/PAR
-------------------	-----------------------------------	--	----------------------------	---------

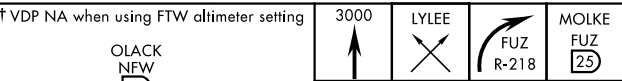
When local altimeter is not received use Fort Worth Meacham altimeter setting.

CAUTION: Intermediate length 5.4 NM less than minimum 6 NM.

CAUTION: TCH exceeds 60 ft.

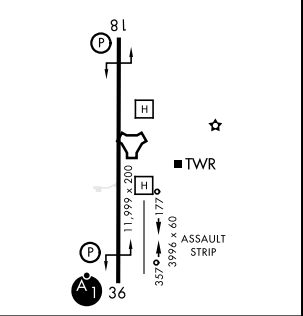


EMERG SAFE ALT 100 NM 4000



ELEV 650	TDZE 636
172°	REIL Rwy 18 HIRL Rwy 18-36

CATEGORY	C	D	E
S-18	1120-1 $\frac{3}{8}$	484	(500-1 $\frac{3}{8}$)
CIRCLING *	1320-1 $\frac{3}{4}$ 670 (700-1 $\frac{3}{4}$)	1400-2 $\frac{1}{2}$ 750 (800-2 $\frac{1}{2}$)	1420-2 $\frac{3}{4}$ 770 (800-2 $\frac{3}{4}$)
FORT WORTH MEACHAM ALTIMETER			
S-18	1140-1 $\frac{3}{8}$	504	(500-1 $\frac{3}{8}$)
CIRCLING *	1340-2 690 (700-1)	1420-2 $\frac{1}{2}$ 770 (800-2 $\frac{1}{2}$)	1440-2 $\frac{3}{4}$ 790 (800-2 $\frac{3}{4}$)



FORT WORTH, TEXAS 32°46'N-97°26'W FORT WORTH NAS JRB (CARSWELL FLD) (KNFW)

Amtd 1 14MAY26

HI-TACAN Y RWY 18

SC-2, 14 MAY 2026 to 11 JUN 2026

SC-2, 14 MAY 2026 to 11 JUN 2026