

FORT WORTH, TEXAS

ILS Z or LOC Z RWY 36

LOC I-FWH 109.3	APCH CRS 357°	Rwy Ldg 11,999 TDZE 650 Arpt Elev 650
---------------------------	-------------------------	--

[USN] FORT WORTH NAS JRB (CARSWELL FLD) (KNFW)

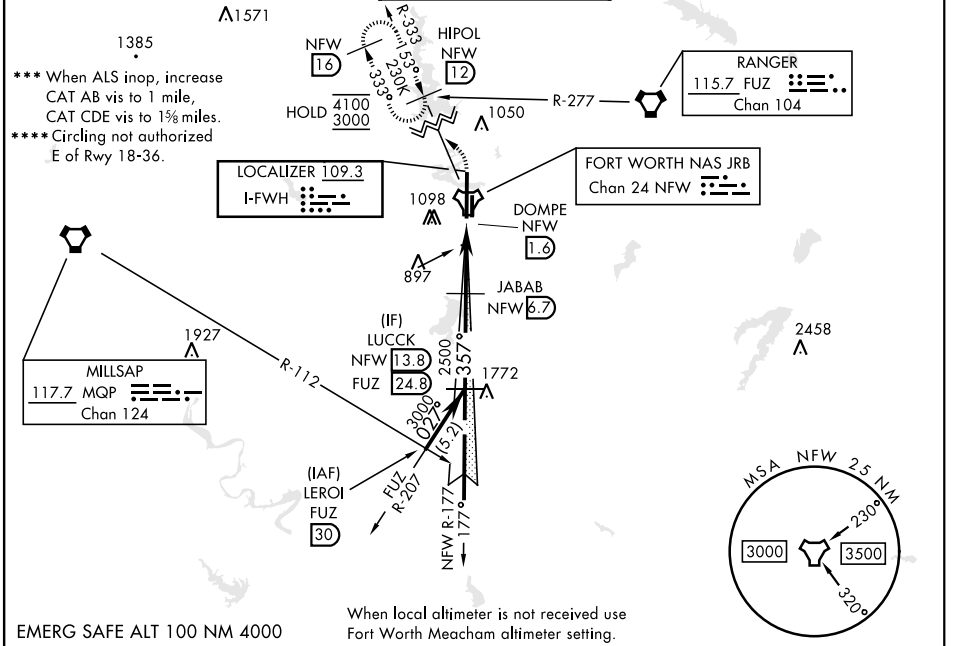
DME required. FUZ VORTAC or RADAR required.

▼ * When ALS inop, increase vis to ¾ mile.
** When ALS inop, increase CAT AB vis to 1 mile, CAT CDE vis to 1½ miles.

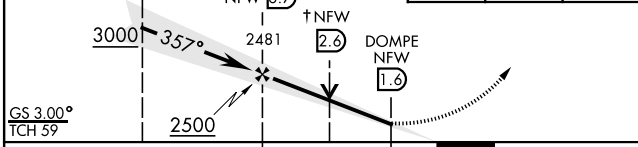
ALSF-1

MISSED APPROACH: Climb to 2000, then climbing left to 3000, intercept NFW TACAN R-333 to HIPOL and hold, continue to climb-in-hold to 3000.

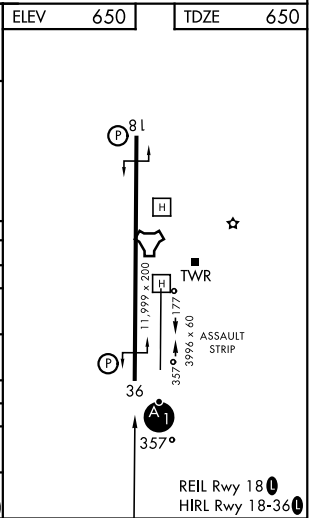
ATIS ★ 351.675	LONE STAR APP CON 125.8 257.95	NAVY FORT WORTH TOWER★ 120.95 269.325	GND CON 121.675 279.575	ASR/PAR
--------------------------	--	---	-----------------------------------	---------



EMERG SAFE ALT 100 NM 4000	When local altimeter is not received use Fort Worth Meacham altimeter setting.	2000	3000	HIPOL NFW 12	ELEV 650	TDZE 650
----------------------------	--	------	------	--------------	----------	----------



CATEGORY	A	B	C	D	E
S-ILS 36*	850-½		200	(200-½)	
S-LOC 36**	1180-½	530 (600-½)	1180-1	530 (600-1)	
CIRCLING****	1220-1 570 (600-1)	1320-1 670 (700-1)	1320-1¾ 670 (700-1¾)	1400-2½ 750 (800-2½)	1420-2¾ 770 (800-2¾)
FORT WORTH MEACHAM ALTIMETER					
S-ILS 36*	870-½		220	(300-½)	
S-LOC 36***	1200-½	550 (600-½)	1200-1½	550 (600-1½)	
CIRCLING****	1240-1 590 (600-1)	1340-1 690 (700-1)	1340-2 690 (700-2)	1420-2½ 770 (800-2½)	1440-2¾ 790 (800-2¾)



FORT WORTH, TEXAS 32°46'N-97°26'W FORT WORTH NAS JRB (CARSWELL FLD) (KNFW)

Amdt 1 14MAY26

ILS Z or LOC Z RWY 36

SC-2, 14 MAY 2026 to 11 JUN 2026

SC-2, 14 MAY 2026 to 11 JUN 2026