

NANDR FOUR DEPARTURE (RNAV)

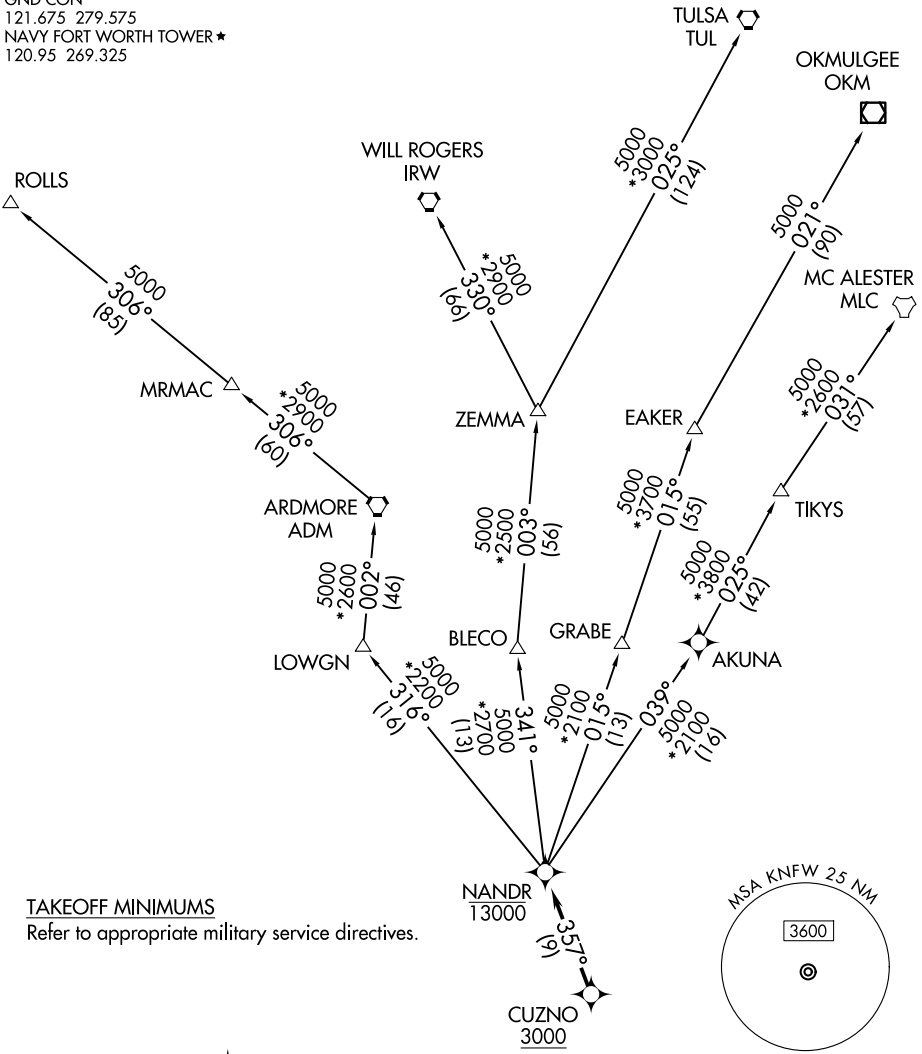
AL-160 (FAA)

FORT WORTH, TEXAS

LONE STAR DEP CON
125.8 257.95
ATIS*
351.675
GND CON
121.675 279.575
NAVY FORT WORTH TOWER*
120.95 269.325

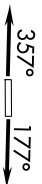
RNAV 1 - DME/DME/IRU or GPS required.
RADAR required.

**TOP ALTITUDE:
ASSIGNED BY ATC**



TAKEOFF MINIMUMS

Refer to appropriate military service directives.



NOTE: EAKER Transition: For TUL terminal arrivals only.
 NOTE: TULSA Transition: For all aircraft overflying TUL VORTAC.
 NOTE: Aircraft arriving to the Oklahoma City terminal area,
 file and expect the ZEMMA enroute transition.

NOTE: Chart not to scale.

(CONTINUED ON FOLLOWING PAGE)

SC-2, 14 MAY 2026 to 11 JUN 2026

SC-2, 14 MAY 2026 to 11 JUN 2026



DEPARTURE ROUTE DESCRIPTION

TAKEOFF RUNWAY 18: Climb on heading 177° or as assigned by ATC, thence. . .

TAKEOFF RUNWAY 36: Climb on heading 357° or as assigned by ATC, thence. . .

. . .expect RADAR vectors to cross CUZNO at or above 3000, then on track 357° to cross NANDR at or below 13000, then on assigned transition. Maintain ATC assigned altitude, expect filed altitude 10 minutes after departure.

EAKER TRANSITION (NANDR4.EAKER)

MC ALESTER TRANSITION (NANDR4.MLC)

OKMULGEE TRANSITION (NANDR4.OKM)

ROLLS TRANSITION (NANDR4.ROLLS)

TULSA TRANSITION (NANDR4.TUL)

WILL ROGERS TRANSITION (NANDR4.IRW)

ZEMMA TRANSITION (NANDR4.ZEMMA)

SC-2, 14 MAY 2026 to 11 JUN 2026

SC-2, 14 MAY 2026 to 11 JUN 2026