

FORT WORTH, TEXAS

# RNAV (GPS) RWY 36

FORT WORTH NAS JRB (CARSWELL FLD) (KNFW)

WAAS CH <b>49487</b> <b>W36A</b>	APCH CRS <b>357°</b>	Rwy Idg <b>11,999</b> TDZE <b>650</b> Arprt Elev <b>650</b>
--	-------------------------	---

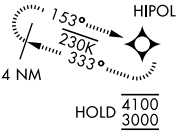
[USN]

RNP APCH	ALSIF-1
▼ When local altimeter is not received use Fort Worth Meacham altimeter setting.	

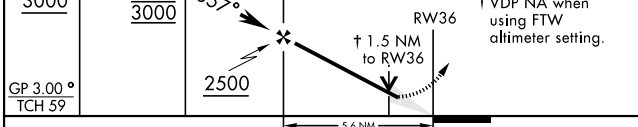
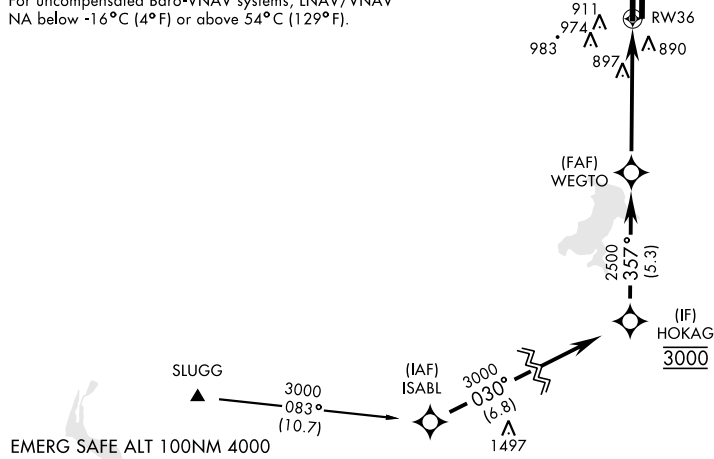
MISSED APPROACH: Climb to 1700, then climbing left turn to 3000 direct HIPOL and hold.

ATIS* <b>351.675</b>	LONE STAR APP CON <b>125.8 257.95</b>	NAVY FORT WORTH TOWER* <b>120.95 269.325</b>	GND CON <b>121.675 279.575</b>	ASR/PAR
-------------------------	--	---	-----------------------------------	---------

- \*When ALS inop, increase vis to 3/4 mile.
- \*\*When ALS inop, increase CAT AB vis to 1 mile, CAT CD vis to 1 1/2 miles.
- \*\*\*When ALS inop, increase vis to 1 1/2 miles, Baro-VNAV NA when local altimeter not received.
- \*\*\*\*Circling not authorized E of Rwy 18-36.

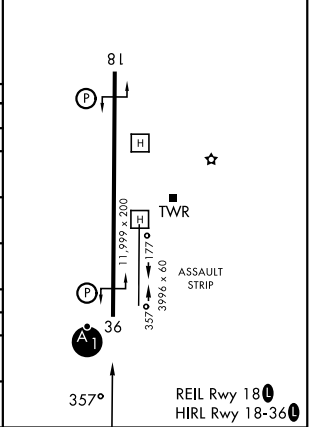


For uncompensated Baro-VNAV systems, LNAV/VNAV NA below -16°C (4°F) or above 54°C (129°F).



ELEV	650	TDZE	650
------	-----	------	-----

CATEGORY	A	B	C	D
LPV DA *	850-1/2		200	(200-1/2)
LNAV MDA **	1200-1/2	550 (600-1/2)	1200-1 1/8	550 (600-1 1/8)
LNAV/VNAV DA ***	1195-1 1/8		545	(600-1 1/8)
CIRCLING ****	1220-1 570 (600-1)	1320-1 670 (700-1)	1320-1 3/4 670 (700-1 3/4)	1400-2 1/2 750 (800-2 1/2)
FORT WORTH MEACHAM ALTIMETER				
LPV DA *	870-1/2		220	(300-1/2)
LNAV MDA **	1220-1/2	570 (600-1/2)	1220-1 1/4	570 (600-1 1/4)
CIRCLING ****	1240-1 590 (600-1)	1340-1 690 (700-1)	1340-2 690 (700-2)	1420-2 1/2 770 (800-2 1/2)



FORT WORTH, TEXAS  
Amdt 3 14MAY26

32°46'N-97°26'W

FORT WORTH NAS JRB (CARSWELL FLD) (KNFW)

# RNAV (GPS) RWY 36

SC-2, 14 MAY 2026 to 11 JUN 2026

SC-2, 14 MAY 2026 to 11 JUN 2026