

WAAS CH <b>49242</b> <b>W12A</b>	APP CRS <b>111°</b>	Rwy Ldg TDZE Apt Elev	<b>3212</b> <b>280</b> <b>280</b>
--	------------------------	-----------------------------	---

# RNAV (GPS) RWY 12

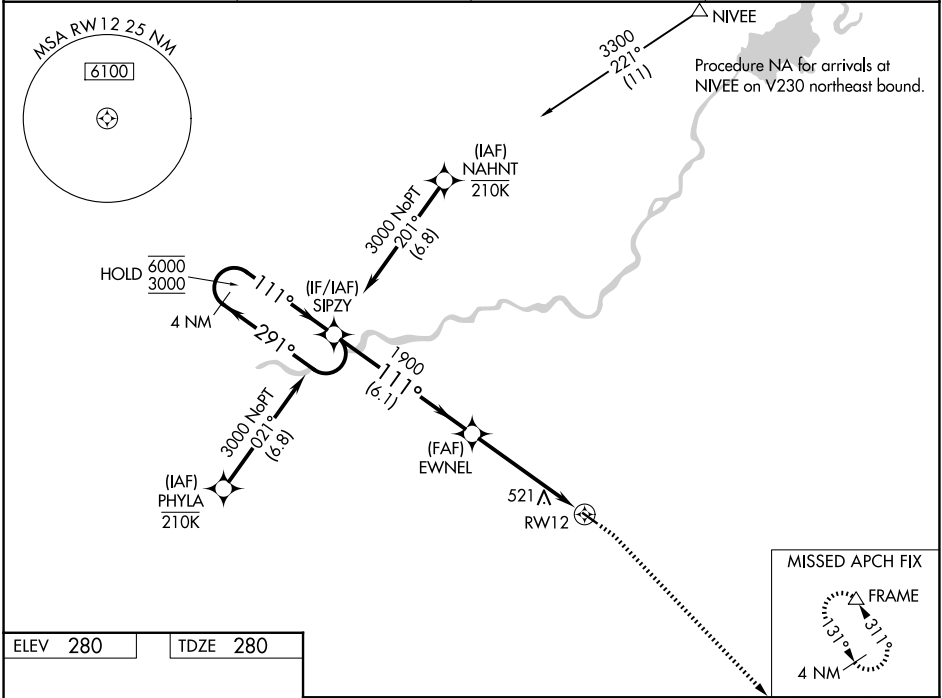
FRESNO CHANDLER EXEC (FCH)

RNP APCH-GPS.

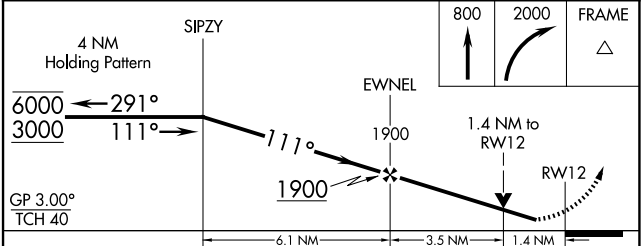
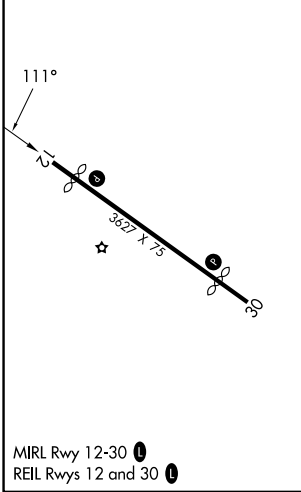
▼ Circling Rwy 30 NA at night. Rwy 12 helicopter visibility reduction below 3/4 SM NA.  
▲ For uncompensated Baro-VNAV systems, LNAV/VNAV NA below -1° C or above 54°C.

MISSED APPROACH: Climb to 800 then climbing right turn to 2000 direct FRAME and hold.

AWOS-3 <b>135.225</b>	FRESNO APP CON <b>119.0 323.25</b>	CLNC DEL <b>119.0</b>	UNICOM <b>123.0 (CTAF) 0</b>
--------------------------	---------------------------------------	--------------------------	---------------------------------



ELEV 280	TDZE 280
----------	----------



	A	B	C	D
LPV DA	530-1 250 (300-1)			NA
LNAV/VNAV DA	809-1½ 529 (600-1½)			NA
LNAV MDA	780-1 500 (500-1)	780-1⅜ 500 (500-1⅜)		NA
CIRCLING	960-1 680 (700-1)	960-2 680 (700-2)		NA

SW-2, 14 MAY 2026 to 11 JUN 2026

SW-2, 14 MAY 2026 to 11 JUN 2026