

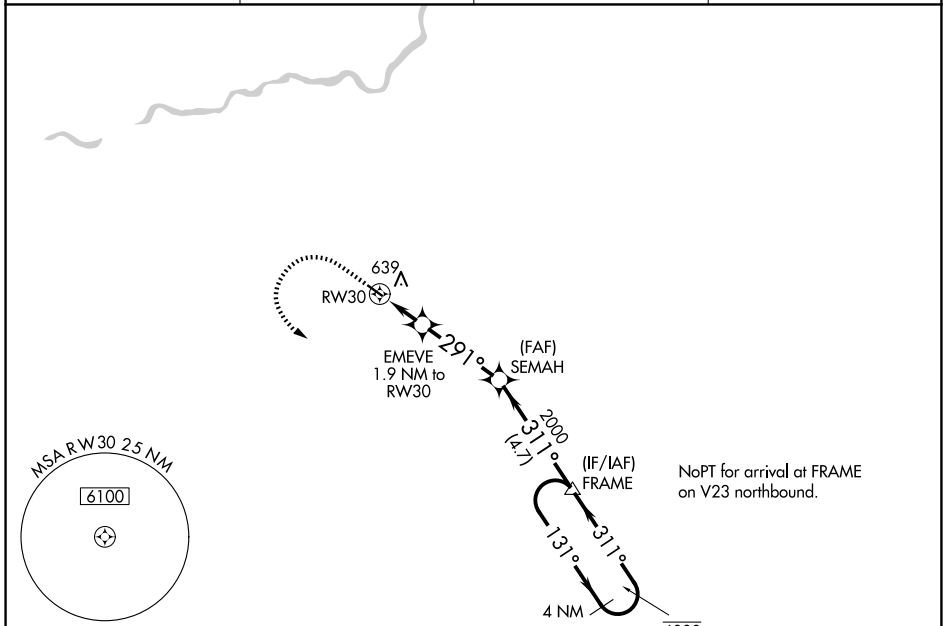
APP CRS <b>291°</b>	Rwy Ldg TDZE Apt Elev	<b>3089</b> <b>280</b> <b>280</b>
------------------------	-----------------------------	---

# RNAV (GPS) RWY 30

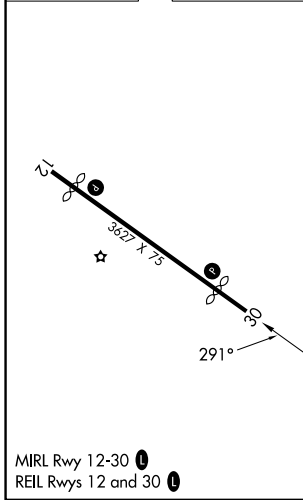
FRESNO CHANDLER EXEC (F'CH)

RNP APCH. ▼ Straight-in Rwy 30 NA at night, Circling Rwy 30 NA at night. Rwy 30 helicopter visibility reduction below 1 SM NA.	MISSED APPROACH: Climb to 1000 then climbing left turn to 2000 direct FRAME and hold.
---	---

AWOS-3 <b>135.225</b>	FRESNO APP CON <b>119.0 323.25</b>	CLNC DEL <b>119.0</b>	UNICOM <b>123.0 (CTAF) 0</b>
--------------------------	---------------------------------------	--------------------------	---------------------------------



ELEV 280	TDZE 280
----------	----------



	1000	2000	FRAME	SEMAH	FRAME	4 NM Holding Pattern
	↑	↶	△			
		EMEVE 1.9 NM to RWY30	3.00° TCH 40°	2000	311°	131° → 6000 ← 311° 2000
		RWY30	291°	2000		
		-1.9	3.4 NM	4.7 NM		
CATEGORY	A	B	C	D		
LNAV MDA	800-1	520 (600-1)	800-1 3/8 520 (600-1 3/8)	NA		
CIRCLING	960-1	680 (700-1)	960-2 680 (700-2)	NA		

SW-2, 14 MAY 2026 to 11 JUN 2026

SW-2, 14 MAY 2026 to 11 JUN 2026