

FRESNO, CALIFORNIA

HI-LOC Z RWY 11L

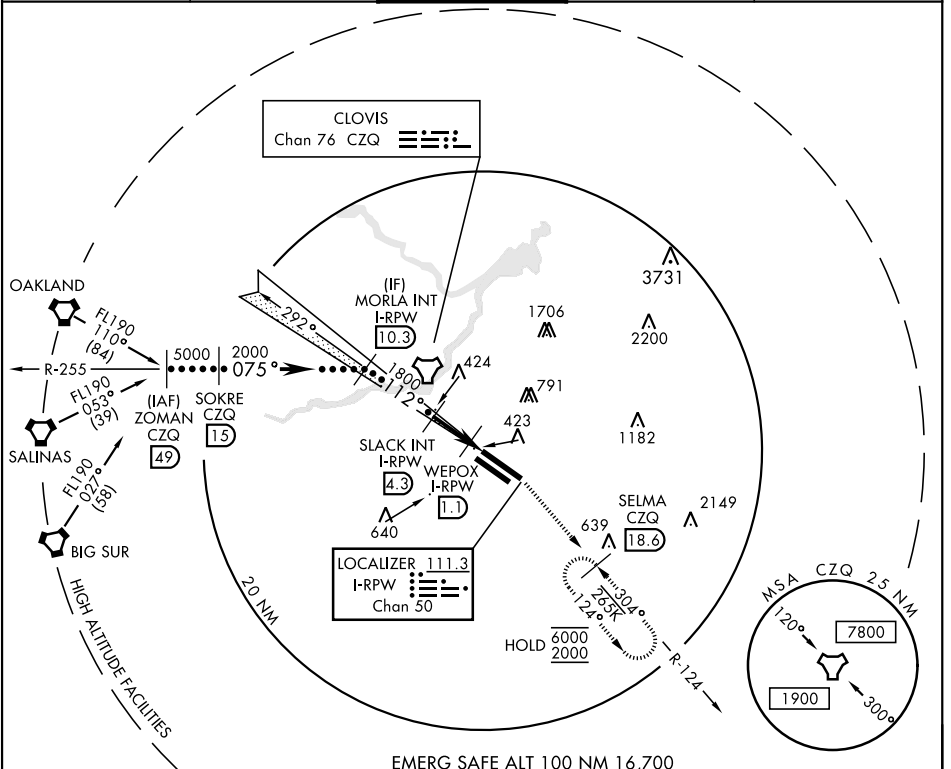
LOC/DME I-RPW 111.3 Chan 50	APCH CRS 112°	Rwy Idg 11L 9279 11R 8008	TDZE 11L 336 11R 333	Arprt Elev 336
---	-------------------------	---	--	--------------------------

AL-162 [USAF] FRESNO YOSEMITE INTL (KFAT)

DME required.

MISSED APPROACH: Climb to 2000 on heading 112° and CZQ TACAN R-124 to SELMA 18.6 DME and hold.

ATIS 121.35 273.6	APP CON 119.6 351.95	TOWER 118.2 251.1	GND CON 121.7 348.6	CLNC DEL 124.35 348.6
-----------------------------	--------------------------------	-----------------------------	-------------------------------	---------------------------------



SW-2, 14 MAY 2026 to 11 JUN 2026

SW-2, 14 MAY 2026 to 11 JUN 2026

ZOMAN CZQ 49 R-255 FL190	SOKRE CZQ 15	MORLA INT I-RPW 10.3	SLACK INT I-RPW 4.3	WEPOX I-RPW 1.1	I-RPW DME 0.2	SELMA CZQ R-124 18.6	ELEV 336	TDZE 11L 336 TDZE 11R 333
						112° 4.5 NM from FAF Rwy 11L Idg 9279' Rwy 29R Idg 9227'		
CATEGORY	C		D		E			
S-LOC 11L	680/55		344		(400-1¼)			
SIDE STEP RWY 11R	680-1½ 347 (400-1½)		680-2		347 (400-2)			
CIRCLING	920-1½ 584 (600-1½)		920-2 584 (600-2)		1140-2¾ 804 (900-2¾)			
REIL Rwy 11L and 11R HIRL Rwy 11L-29R MIRL Rwy 11R-29L TDZL/CL Rwy 29R								

FRESNO, CALIFORNIA

36°47'N-119°43'W

FRESNO YOSEMITE INTL (KFAT)

Amtd 3 10OCT19

HI-LOC Z RWY 11L