

LOC/DME I-FAT 111.3 Chan 50	APP CRS 292°	Rwy Ldg TDZE Apt Elev 9227 333 336
--	------------------------	--

ILS Y RWY 29R (CAT II & III)

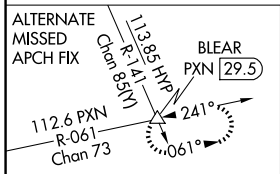
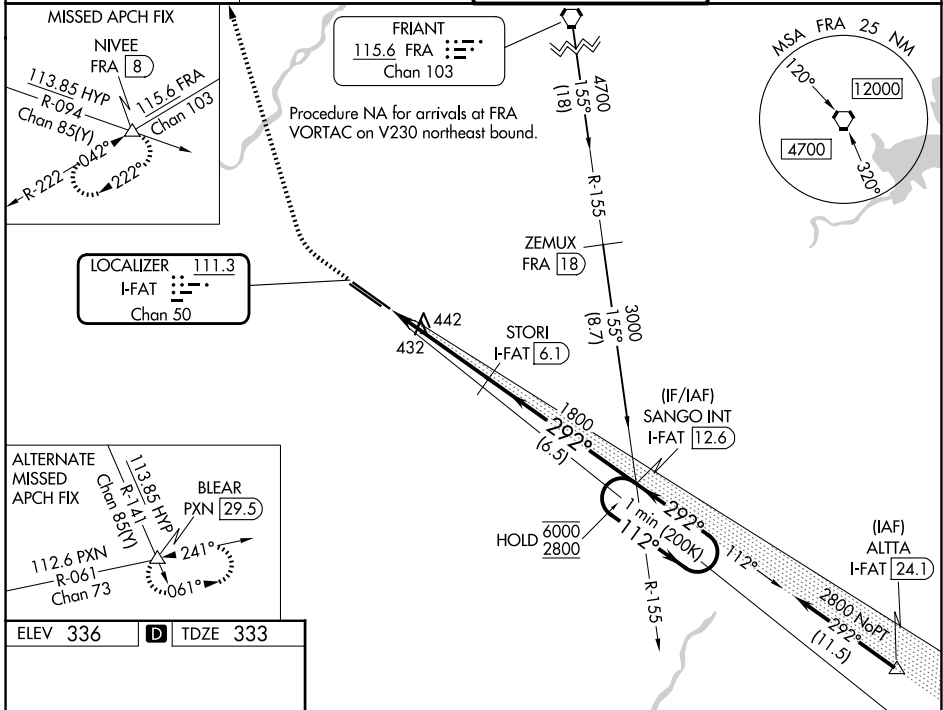
FRESNO YOSEMITE INTL (FAT)

▼ CAT II: RVR 1000 authorized with specific OPSPEC, MSPEC, or LOA approval and use of autoland or HUD to touchdown.

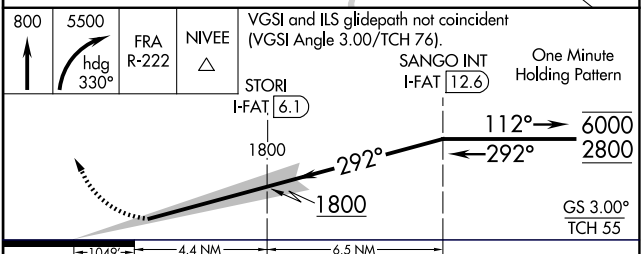
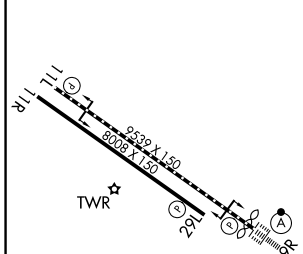
ALSF-2
A

MISSED APPROACH: Climb to 800 then climbing right turn to 5500 on heading 330° and FRA VORTAC R-222 to NIVEE INT/FRA 8 DME and hold, continue climb-in-hold to 5500.

ATIS 121.35 273.6	FRESNO APP CON 119.6 351.95	FRESNO TOWER 118.2 251.1	GND CON 121.7 348.6
-----------------------------	---------------------------------------	------------------------------------	-------------------------------



ELEV 336	D	TDZE 333
----------	----------	----------



800	5500	FRA R-222	NIVEE	VGSI and ILS glidepath not coincident (VGSI Angle 3.00/TCH 76).	SANGO INT I-FAT 12.6	One Minute Holding Pattern
		STORI I-FAT 6.1				
		1800				
		292°				
		112°				
		6000				
		2800				
		GS 3.00°				
		TCH 55				
		1049°				
		4.4 NM				
		6.5 NM				
CATEGORY	A	B	C	D		
S-ILS 29R	CAT II RA 101/12 100 DA 433					
S-ILS 29R	CAT III RVR 06					

CATEGORY II & III ILS - SPECIAL AIRCREW & AIRCRAFT CERTIFICATION REQUIRED

REIL Rwy 11L and 11R
MIRL Rwy 11L-29R
MIRL Rwy 11R-29L
TDZL/RCLS Rwy 29R

SW-2, 14 MAY 2026 to 11 JUN 2026

SW-2, 14 MAY 2026 to 11 JUN 2026