

GIFFA ONE DEPARTURE

AL-164 (FAA)

SCHOLES INTL AT GALVESTON (GLS)

GALVESTON, TEXAS

ASOS
123.95
CLNC DEL (when twr closed)
135.35
GND CON
118.625
GALVESTON TOWER ★
120.575 (CTAF)
HOUSTON DEP CON
134.45 284.0

**TOP ALTITUDE:
ASSIGNED BY ATC**

NOTE: RADAR required.
NOTE: For aircraft destined for the DFW terminal area only.

LEONA
110.8 LOA
Chan 45

CEDAR CREEK
114.8 CQY
Chan 95

DAISETTA
116.9 DAS
Chan 116

HUMBLE
116.6 IAH
Chan 113

TAKEOFF MINIMUMS

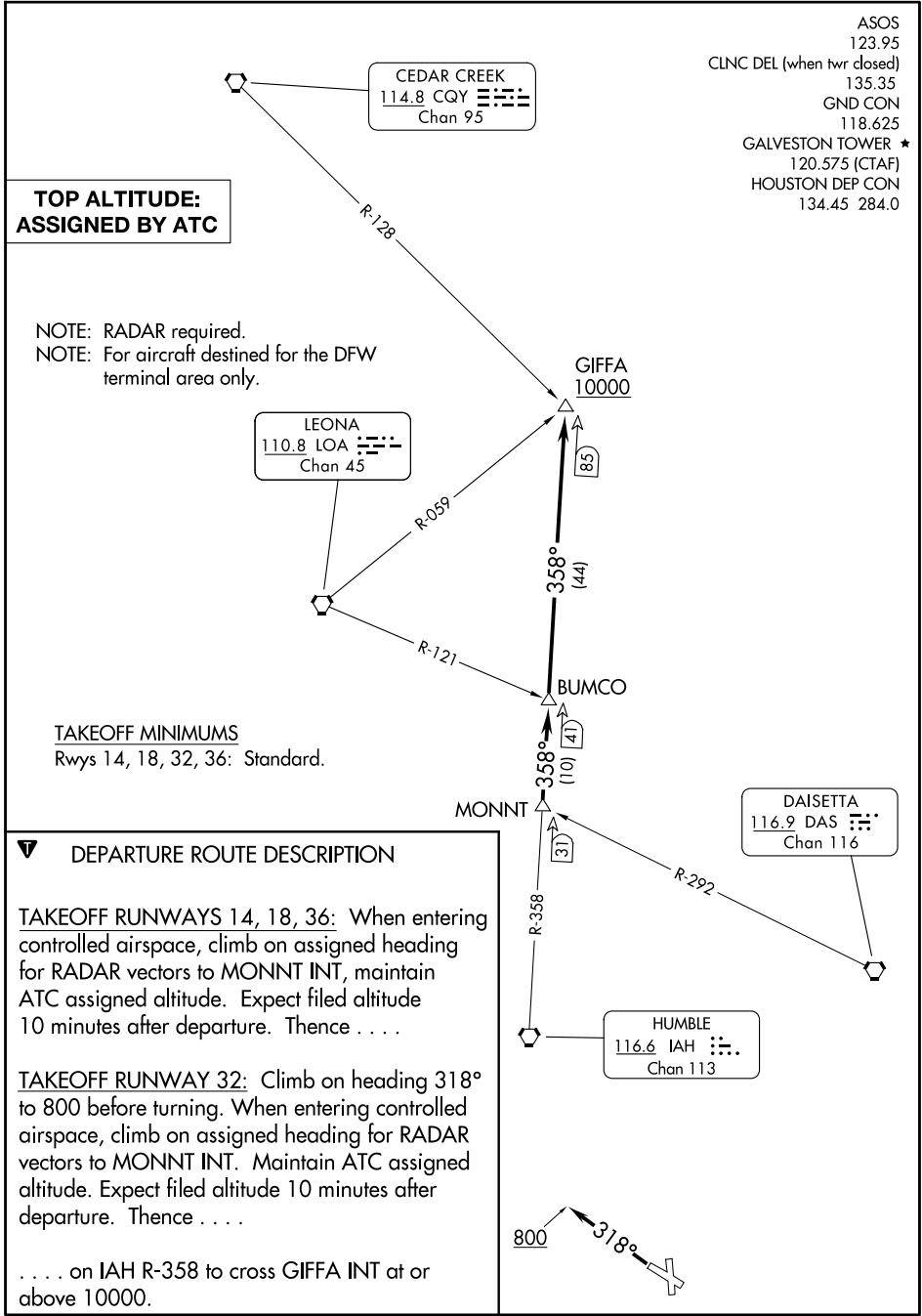
Rwys 14, 18, 32, 36: Standard.

DEPARTURE ROUTE DESCRIPTION

TAKEOFF RUNWAYS 14, 18, 36: When entering controlled airspace, climb on assigned heading for RADAR vectors to MONNT INT, maintain ATC assigned altitude. Expect filed altitude 10 minutes after departure. Thence

TAKEOFF RUNWAY 32: Climb on heading 318° to 800 before turning. When entering controlled airspace, climb on assigned heading for RADAR vectors to MONNT INT. Maintain ATC assigned altitude. Expect filed altitude 10 minutes after departure. Thence

. . . . on IAH R-358 to cross GIFFA INT at or above 10000.



SC-5, 14 MAY 2026 to 11 JUN 2026

SC-5, 14 MAY 2026 to 11 JUN 2026

GIFFA ONE DEPARTURE

GALVESTON, TEXAS

SCHOLES INTL AT GALVESTON (GLS)