

(INDIE8.INDIE) 22307

AL-164 (FAA)

SCHOLES INTL AT GALVESTON (GLS)  
GALVESTON, TEXAS

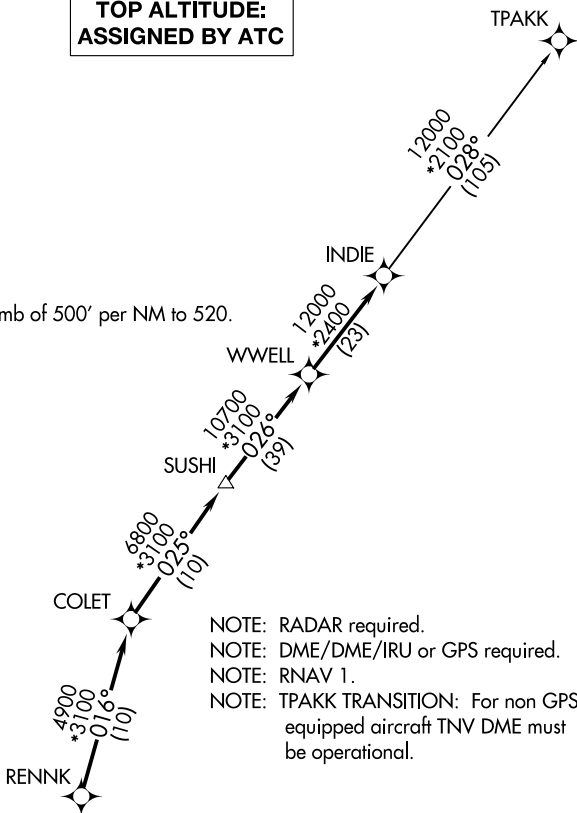
# INDIE EIGHT DEPARTURE (RNAV)

ASOS  
123.95  
CLNC DEL  
135.35 (when twr closed)  
GND CON  
118.625  
GALVESTON TOWER ★  
120.575 (CTAF)  
HOUSTON DEP CON  
134.45 284.0

**TOP ALTITUDE:  
ASSIGNED BY ATC**

### TAKEOFF MINIMUMS

Rwys 14, 18, 32, 36:  
Standard with minimum climb of 500' per NM to 520.



- NOTE: RADAR required.
- NOTE: DME/DME/IRU or GPS required.
- NOTE: RNAV 1.
- NOTE: TPAKK TRANSITION: For non GPS equipped aircraft TNV DME must be operational.

### DEPARTURE ROUTE DESCRIPTION

TAKEOFF RUNWAY 14: Climb on heading 138° to 520 for RADAR vectors to RENNK, thence . . .

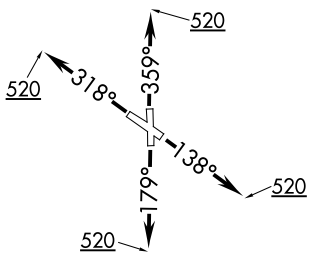
TAKEOFF RUNWAY 18: Climb on heading 179° to 520 for RADAR vectors to RENNK, thence . . .

TAKEOFF RUNWAY 32: Climb on heading 318° to 520 for RADAR vectors to RENNK, thence . . .

TAKEOFF RUNWAY 36: Climb on heading 359° to 520 for RADAR vectors to RENNK, thence . . .

. . . on track 016° to COLET, then on track 025° to SUSHI, then on track 026° to WWELL, then on track 026° to INDIE, then on (transition). Maintain ATC assigned altitude. Expect filed altitude 10 minutes after departure.

TPAKK TRANSITION (INDIE8.TPAKK)



NOTE: Chart not to scale.

# INDIE EIGHT DEPARTURE (RNAV)

(INDIE8.INDIE) 07OCT21

GALVESTON, TEXAS  
SCHOLES INTL AT GALVESTON (GLS)

SC-5, 14 MAY 2026 to 11 JUN 2026

SC-5, 14 MAY 2026 to 11 JUN 2026