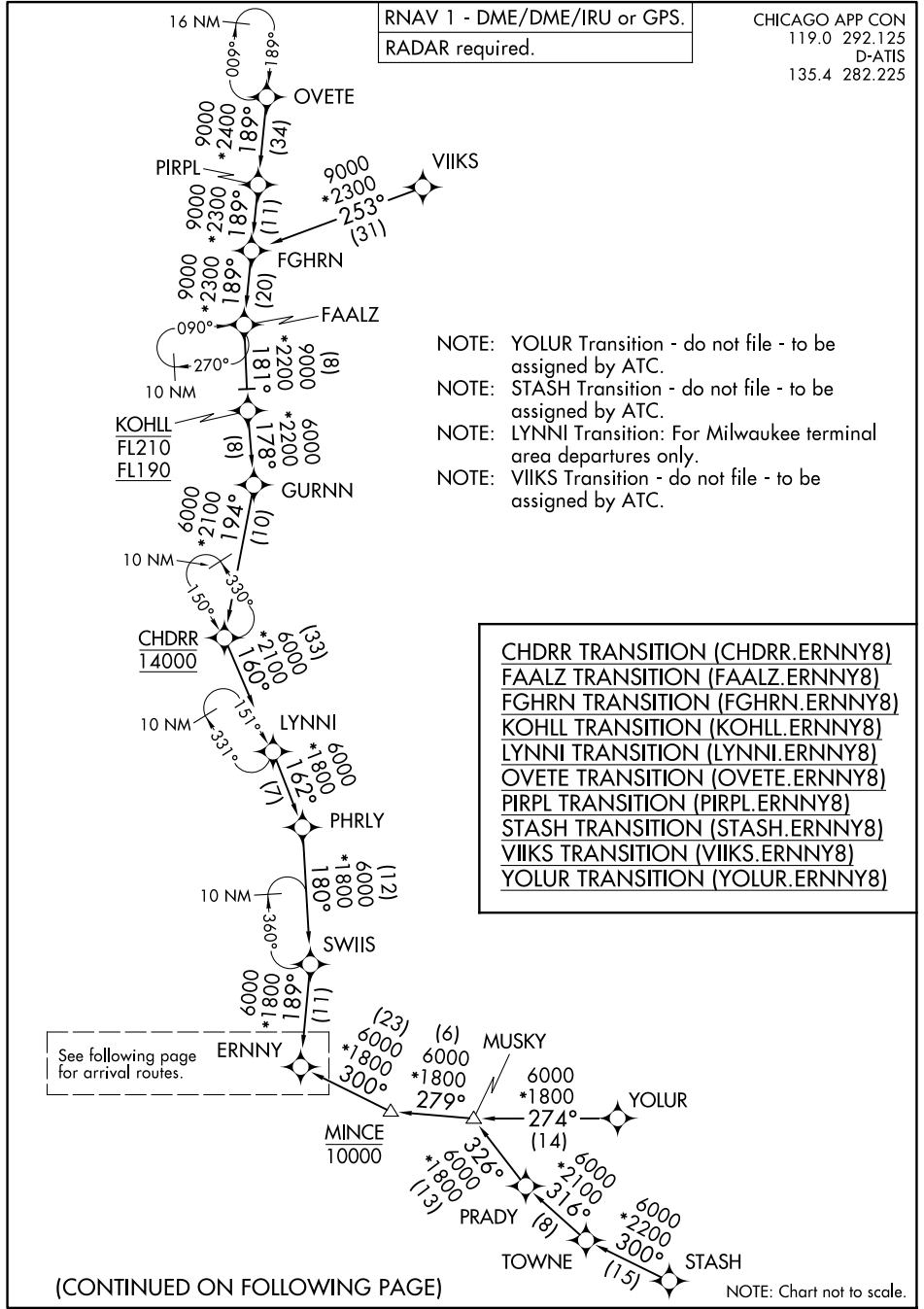


ERNNY EIGHT ARRIVAL (RNAV) Transition Routes

CHICAGO, ILLINOIS



- NOTE: YOLUR Transition - do not file - to be assigned by ATC.
- NOTE: STASH Transition - do not file - to be assigned by ATC.
- NOTE: LYNNI Transition: For Milwaukee terminal area departures only.
- NOTE: VIKS Transition - do not file - to be assigned by ATC.

- CHDRR TRANSITION (CHDRR.ERNNY8)
- FAALZ TRANSITION (FAALZ.ERNNY8)
- FGHRN TRANSITION (FGHRN.ERNNY8)
- KOHL TRANSITION (KOHLL.ERNNY8)
- LYNNI TRANSITION (LYNNI.ERNNY8)
- OVETE TRANSITION (OVETE.ERNNY8)
- PIRPL TRANSITION (PIRPL.ERNNY8)
- STASH TRANSITION (STASH.ERNNY8)
- VIKS TRANSITION (VIKS.ERNNY8)
- YOLUR TRANSITION (YOLUR.ERNNY8)

EC-3, 14 MAY 2026 to 11 JUN 2026

EC-3, 14 MAY 2026 to 11 JUN 2026

(ERNNY.ERNNY8) 23110

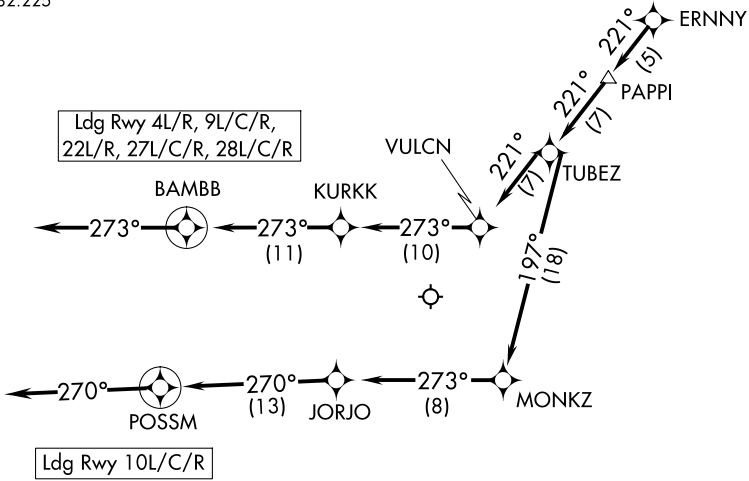
AL-166 (FAA)

CHICAGO O'HARE INTL (ORD)
CHICAGO, ILLINOIS

ERNNY EIGHT ARRIVAL (RNAV) Arrival Routes

CHICAGO APP CON
119.0 292.125
D-ATIS
135.4 282.225

RNAV 1 - DME/DME/IRU or GPS.
RADAR required.



NOTE: Landing Rwy 4L/R, 22L/R, 27L/C/R, 28L/C/R: Expect RADAR vectors to final approach course after ERNNY.

NOTE: Chart not to scale.

ARRIVAL ROUTE DESCRIPTION

From ERNNY on track 221° to PAPPY, then on track 221° to TUBEZ.

LANDING RUNWAY 4L/R, 9L/C/R, 22L/R, 27L/C/R, 28L/C/R: From TUBEZ on track 221° to VULCN, then on track 273° to KURKK, then on track 273° to BAMBB, then on track 273°. Expect RADAR vectors to final approach course.

LANDING RUNWAY 10L/C/R: From TUBEZ on track 197° to MONKZ, then on track 273° to JORJO, then on track 270° to POSSM, then on track 270°. Expect RADAR vectors to final approach course.

ERNNY EIGHT ARRIVAL (RNAV) Arrival Routes
(ERNNY.ERNNY8) 20APR23

CHICAGO, ILLINOIS
CHICAGO O'HARE INTL (ORD)

EC-3, 14 MAY 2026 to 11 JUN 2026

EC-3, 14 MAY 2026 to 11 JUN 2026