

LOC/DME I-MED 111.1 Chan 48	APP CRS 093°	Rwy Ldg 12246 TDZE 672 Apt Elev 680
---	------------------------	--

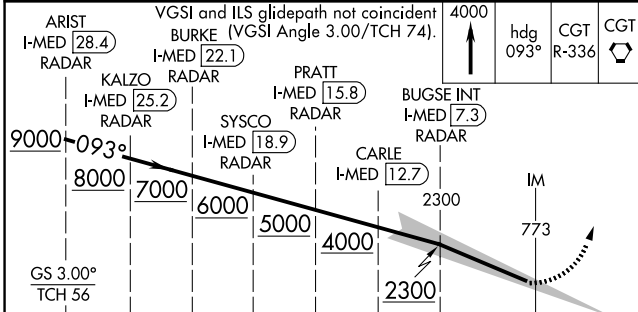
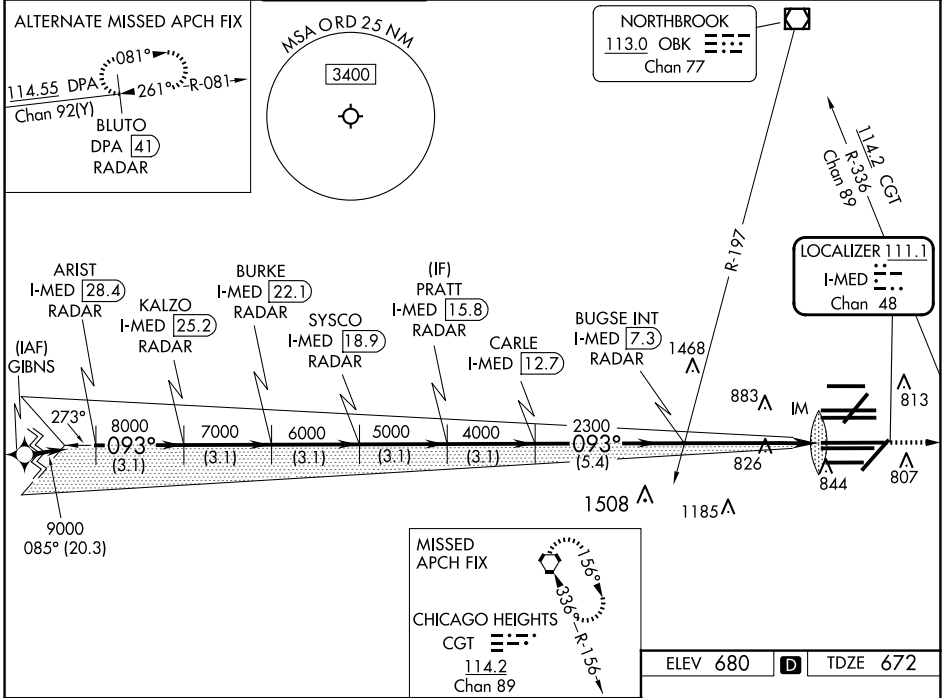
ILS RWY 10L (CAT II & III)

CHICAGO O'HARE INTL (ORD)

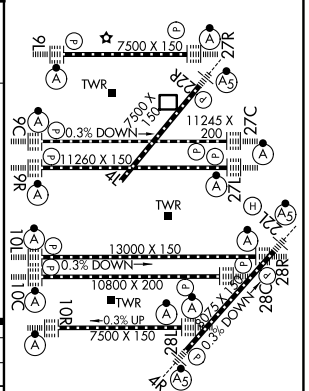
From GIBNS: RNAV-1 GPS required.
 RNAV 1-GPS or RADAR required for procedure entry. DME or RADAR required.
 Simultaneous approach authorized.

ALSf-2
 MISSED APPROACH: Climb to 4000 on heading 093° and CGT VORTAC R-336 to CGT VORTAC and hold.

D-ATIS 282.225	CHICAGO APP CON 119.0 292.125	O'HARE TOWER 132.7 348.0	GND CON (TWR NORTH) 124.125 (TWR SOUTH) 118.05 (ALL TWRS) 226.675	(TWR CENTER) 121.75 (OBND) 121.9 (IBND)	CLNC DEL 121.6	CPDLC
--------------------------	---	------------------------------------	---	---	--------------------------	-------



ELEV 680	TDZE 672
----------	----------



CATEGORY	A	B	C	D
S-ILS 10L	CAT II RA 95/12 100 DA 772			
S-ILS 10L	CAT III RVR 06			

CATEGORY II and III ILS - SPECIAL AIRCREW & AIRCRAFT CERTIFICATION REQUIRED

HIRL all Rwys
 TDZ/CL all Rwys except 4L