


LOC/DME I-IAC <b>110.5</b> Chan <b>42</b>	APP CRS <b>273°</b>	Rwy Ldg <b>11260</b> TDZE <b>654</b> Apt Elev <b>680</b>
---	------------------------	--

# ILS RWY 27L (CAT II & III)

CHICAGO O'HARE INTL (ORD)

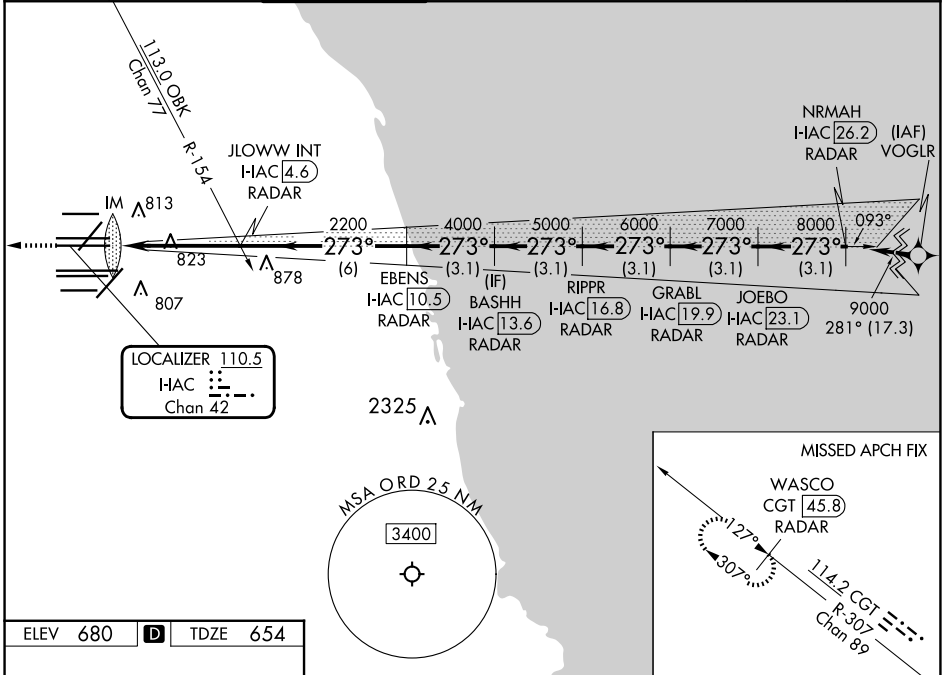
RNP APCH-GPS from VOGRL.

Aircraft not GPS equipped - RADAR required for procedure entry. DME or RADAR required.

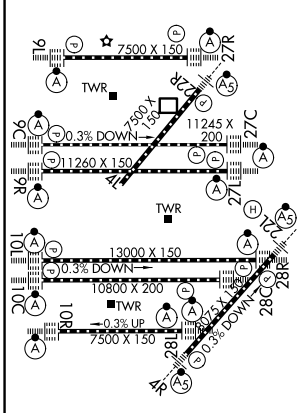
ALSF-2  
 MISSED APPROACH: Climb to 1200 then climb to 4000 on heading 265° and on CGT VORTAC R-307 to WASCO/CGT 45.8 DME/RADAR and hold.

Simultaneous approach authorized.

D-ATIS <b>135.4</b> <b>282.225</b>	CHICAGO APP CON <b>119.0 292.125</b>	O'HARE TOWER <b>126.9 348.0</b>	GND CON (TWR NORTH) <b>124.125</b> (TWR SOUTH) <b>118.05</b> (ALL TWRs) <b>226.675</b>	(TWR CENTER) <b>121.75</b> (OBND) <b>121.9</b> (IBND)	CLNC DEL <b>121.6</b>	CPDLC
--	---	------------------------------------	---	---	--------------------------	-------



ELEV 680	<b>D</b>	TDZE 654
----------	----------	----------



1200	4000	CGT R-307	WASCO CGT 45.8 RADAR	VGSI and ILS glidepath not coincident (VGSI Angle 3.00/TCH 77).	NRMAH I-IAC 26.2 RADAR				
2200	4000	JLOWW INT I-IAC 4.6 RADAR	EBENS I-IAC 10.5 RADAR	RIPPR I-IAC 16.8 RADAR	GRABL I-IAC 19.9 RADAR	JOEBO I-IAC 23.1 RADAR			
751	2200	IM 813	2200	4000	5000	6000	7000	8000	9000
1066'	0.1	4.7 NM	6 NM	3.1 NM	3.1 NM	3.1 NM	3.1 NM	3.1 NM	
CATEGORY	A	B	C	D					
S-ILS 27L	CAT II RA 110/12				100 DA 754				
S-ILS 27L	CAT III RVR 06								

## CATEGORY II & III ILS - SPECIAL AIRCREW & AIRCRAFT CERTIFICATION REQUIRED