

| | | |
|--|------------------------|---|
| LOC/DME I-VZE 108.95 Chan 26(Y) | APP CRS 273° | Rwy Ldg TDZE 651 Apt Elev 680 |
|--|------------------------|---|

ILS RWY 28C (CAT II & III)

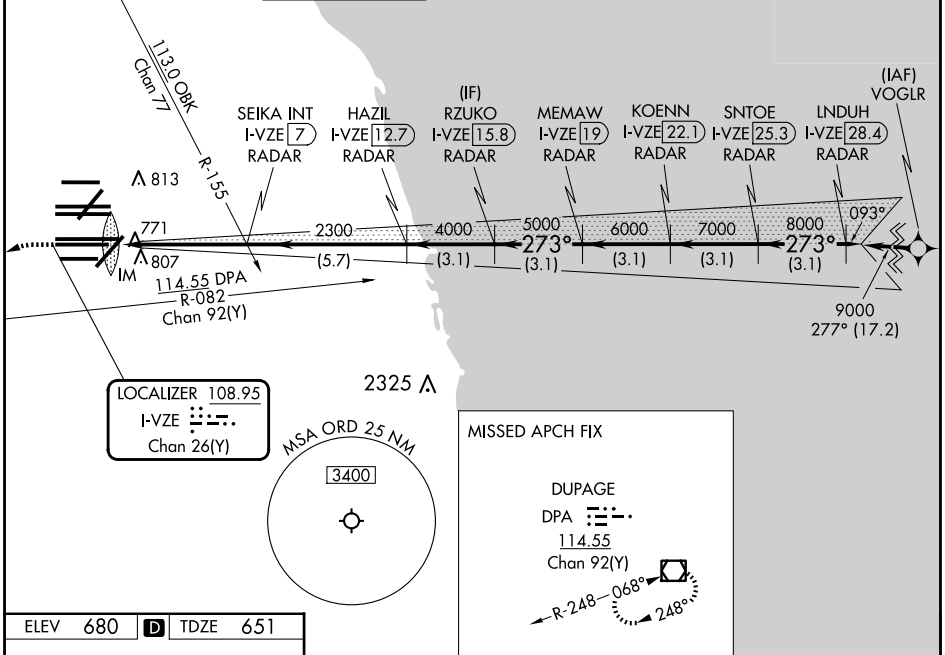
CHICAGO O'HARE INTL (ORD)

From VOGLR: RNAV 1-GPS required.
Aircraft not GPS equipped - RADAR required for procedure entry.
DME or RADAR required.

ALSF-2
MISSED APPROACH: Climb to 1100 then climbing left turn to 4000 on heading 215° and DPA VOR/DME R-082 to DPA VOR/DME and hold.

Simultaneous approach authorized. CAT II: RVR 1000 authorized with specific OPSPEC, MSPEC, or LOA approval and use of autoland or HUD to touchdown.

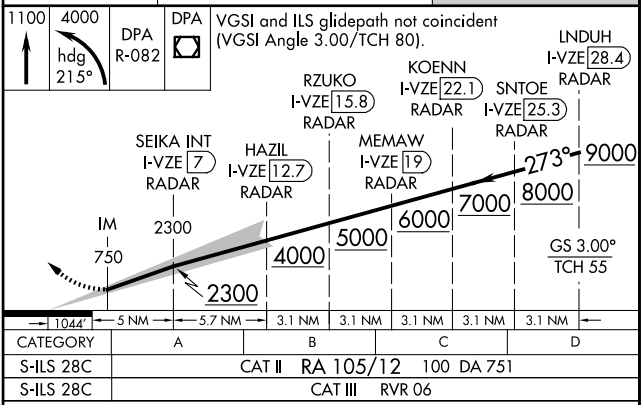
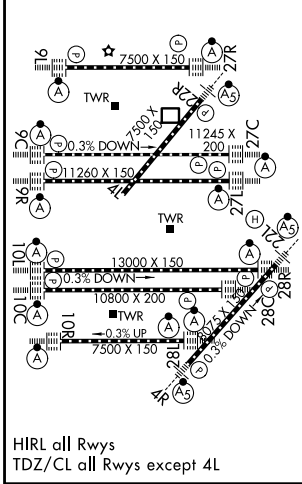
| | | | | | | |
|--|---|-------------------------------------|---|---|--------------------------|-------|
| D-ATIS 135.4 282.225 | CHICAGO APP CON 119.0 292.125 | O'HARE TOWER 120.75 348.0 | GND CON 124.125 (TWR NORTH) 118.05 (TWR SOUTH) 226.675 (ALL TWRs) | (TWR CENTER) 121.75 (OBND) 121.9 (IBND) | CLNC DEL 121.6 | CPDLC |
|--|---|-------------------------------------|---|---|--------------------------|-------|



EC-3, 14 MAY 2026 to 11 JUN 2026

EC-3, 14 MAY 2026 to 11 JUN 2026

| | | |
|----------|---|----------|
| ELEV 680 | D | TDZE 651 |
|----------|---|----------|



| | | | | |
|-----------|-----------------------------|---|---|---|
| CATEGORY | A | B | C | D |
| S-ILS 28C | CAT II RA 105/12 100 DA 751 | | | |
| S-ILS 28C | CAT III RVR 06 | | | |

CATEGORY II & III ILS - SPECIAL AIRCREW & AIRCRAFT CERTIFICATION REQUIRED