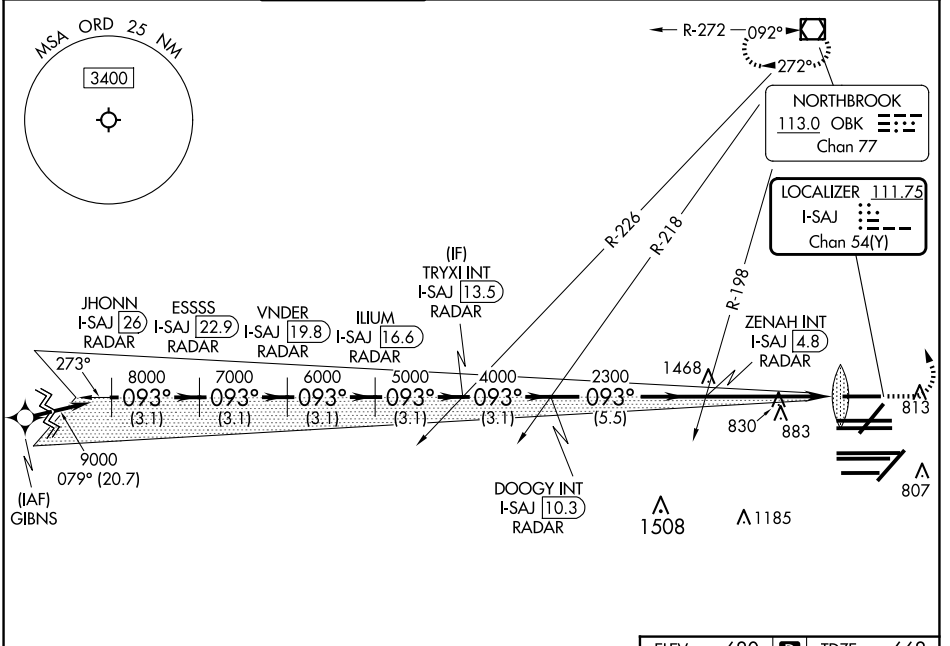


LOC/DME I-SAJ 111.75 Chan 54 (Y)	APP CRS 093°	Rwy Ldg 7500 TDZE 668 Apt Elev 680
---	------------------------	--

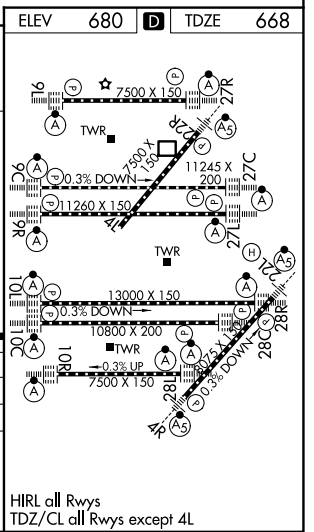
ILS RWY 9L (CAT II & III)

CHICAGO O'HARE INTL (ORD)

RNAV-1 GPS or RADAR required for procedure entry. RADAR or DME required.		ALSF-2 	MISSED APPROACH: Climb to 1100 then climbing left turn to 4000 direct OBK VOR/DME and hold, continue climb-in-hold to 4000.	
Simultaneous approach authorized.				
D-ATIS 135.4 282.225	CHICAGO APP CON 119.0 292.125	O'HARE TOWER 128.15 348.0	GND CON (TWR CENTER) 124.125 (TWR NORTH) 118.05 (TWR SOUTH) 226.675 (ALL TWRs)	CLNC DEL 121.6
			CPDLC	



JHONN I-SAJ (26) RADAR	ESSSS I-SAJ (22.9) RADAR	VNDER I-SAJ (19.8) RADAR	ILIUM I-SAJ (16.6) RADAR	DOOGY INT I-SAJ (10.3) RADAR	ZENAH INT I-SAJ (4.8) RADAR	TRYXI INT I-SAJ (13.5) RADAR															
3.1 NM	3.1 NM	3.1 NM	3.1 NM	3.1 NM	5.5 NM	5 NM															
<table border="1"> <tr> <td>CATEGORY</td> <td>A</td> <td>B</td> <td>C</td> <td>D</td> </tr> <tr> <td>S-ILS 9L</td> <td colspan="4">CAT II RA 104/12 100 DA 768</td> </tr> <tr> <td>S-ILS 9L</td> <td colspan="4">CAT III RVR 06</td> </tr> </table>							CATEGORY	A	B	C	D	S-ILS 9L	CAT II RA 104/12 100 DA 768				S-ILS 9L	CAT III RVR 06			
CATEGORY	A	B	C	D																	
S-ILS 9L	CAT II RA 104/12 100 DA 768																				
S-ILS 9L	CAT III RVR 06																				
<h2>CATEGORY II & III ILS - SPECIAL AIRCREW & AIRCRAFT CERTIFICATION REQUIRED</h2>																					



EC-3, 14 MAY 2026 to 11 JUN 2026

EC-3, 14 MAY 2026 to 11 JUN 2026