

| | | |
|--|------------------------|---|
| LOC/DME I-SXH 108.95 Chan 26(Y) | APP CRS 093° | Rwy Ldg TDZE 669 Apt Elev 680 |
|--|------------------------|---|

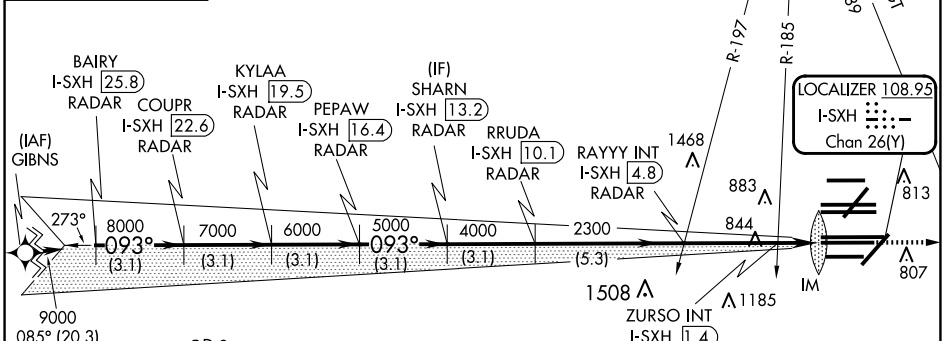
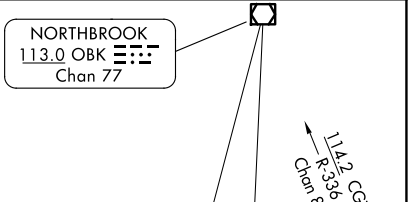
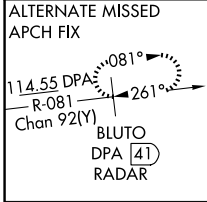
ILS or LOC RWY 10C

CHICAGO O'HARE INTL (ORD)

From GIBNS: RNAV-1 GPS required.
 RNAV 1-GPS or RADAR required for procedure entry. DME or RADAR required.
 Simultaneous approach authorized.

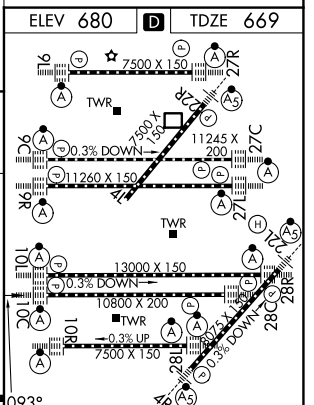
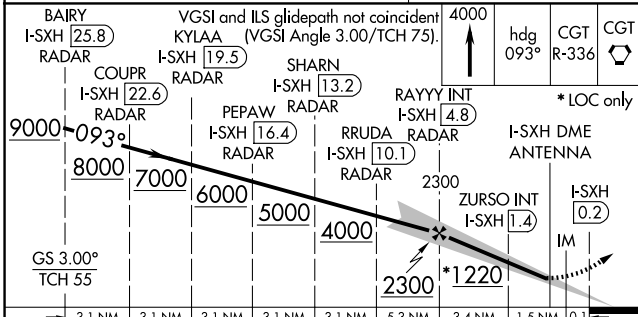
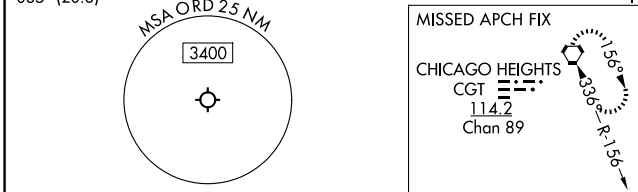
ALSf-2
 MISSED APPROACH: Climb to 4000 on heading 093° and CGT VORTAC R-336 to CGT VORTAC and hold.

| | | | | | | |
|--|---|-------------------------------------|--|---|--------------------------|-------|
| D-ATIS 135.4 282.225 | CHICAGO APP CON 119.0 292.125 | O'HARE TOWER 120.75 348.0 | GND CON (TWR CENTER) 124.125 (TWR NORTH) 118.05 (TWR SOUTH) 226.675 (ALL TWRs) | (TWR CENTER) 121.75 (OBND) 121.9 (IBND) | CLNC DEL 121.6 | CPDLC |
|--|---|-------------------------------------|--|---|--------------------------|-------|



EC-3, 14 MAY 2026 to 11 JUN 2026

EC-3, 14 MAY 2026 to 11 JUN 2026



| | | | | | |
|---|--------------------|-------------|---------|--------------|------|
| CATEGORY | A | B | C | D | |
| S-ILS 10C | 869/18 200 (200-½) | | | | |
| S-LOC 10C | 1220/24 | 551 (600-½) | 1220/60 | 551 (600-1¼) | |
| ZURSO FIX MINIMUMS (DUAL VOR RECEIVERS OR DME REQUIRED) | | | | | |
| S-LOC 10C | 1100/24 | 431 (500-½) | 1100/40 | 431 (500-¾) | |
| Knots | 60 | 90 | 120 | 150 | 180 |
| Min:Sec | 5:00 | 3:20 | 2:30 | 2:00 | 1:40 |