

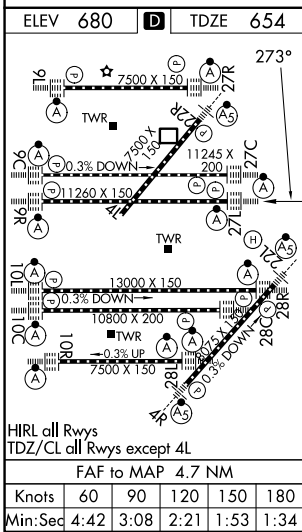
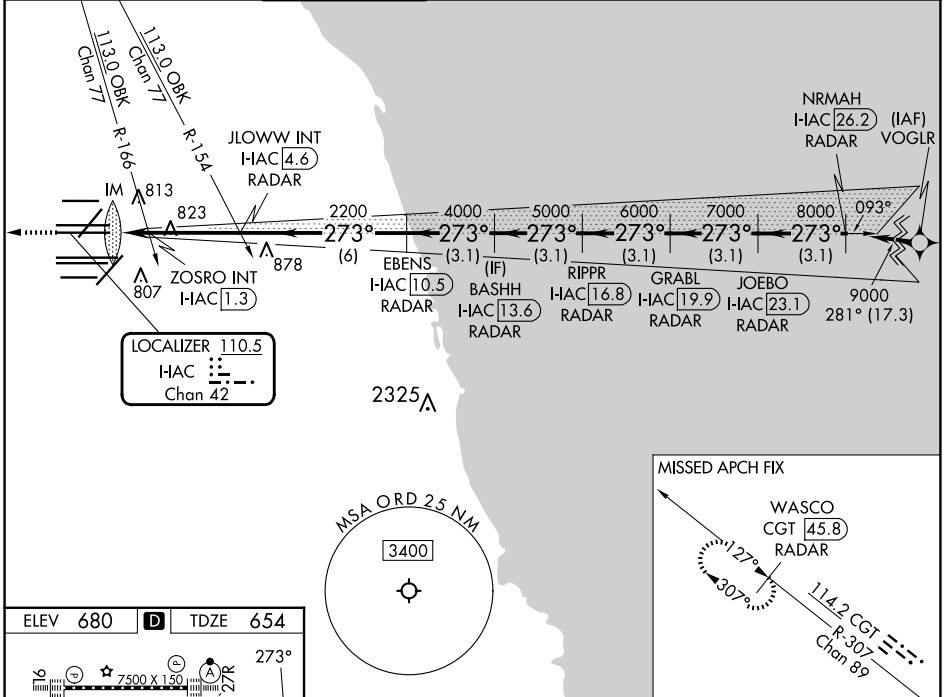
LOC/DME I-AIC 110.5 Chan 42	APP CRS 273°	Rwy Ldg 11260 TDZE 654 Apt Elev 680
---	------------------------	--

ILS or LOC RWY 27L

CHICAGO O'HARE INTL (ORD)

RNP APCH-GPS from VOGLR. Aircraft not GPS equipped - RADAR required for procedure entry. DME or RADAR required.	ALSF-2 	MISSED APPROACH: Climb to 1200 then climb to 4000 on heading 265° and on CGT VORTAC R-307 to WASCO/CGT 45.8 DME/RADAR and hold.
<p>▼ Simultaneous approach authorized. For inop ALS, increase S-LOC 27L Cat C/D visibility to 1 1/8 SM.</p>		

D-ATIS 135.4 282.225	CHICAGO APP CON 119.0 292.125	O'HARE TOWER 126.9 348.0	GND CON 124.125 (TWR NORTH) 118.05 (TWR SOUTH) 226.675 (ALL TWRs)	(TWR CENTER) 121.75 (OBND) 121.9 (IBND)	CLNC DEL 121.6	CPDLC
--	---	------------------------------------	---	---	--------------------------	-------



ELEV 680	TDZE 654	<p>1200 4000</p> <p>↑ hdg 265°</p>		<p>CGT R-307</p> <p>WASCO CGT [45.8] RADAR</p>	<p>VGSI and ILS glidepath not coincident (VGSI Angle 3.00/TCH 77).</p>
<p>HIRL all Rwys</p> <p>TDZ/CL all Rwys except 4L</p>		<p>JLOWW INT I-AIC [4.6] RADAR</p> <p>BASHH I-AIC [13.6] RADAR</p> <p>ZOSRO INT I-AIC [1.3] RADAR</p> <p>I-AIC DME ANTENNA I-AIC [0.2]</p>		<p>GRABL I-AIC [19.9] RADAR</p> <p>RIPPR I-AIC [16.8] RADAR</p> <p>JOEBO I-AIC [23.1] RADAR</p> <p>NRMAH I-AIC [26.2] RADAR</p>	
<p>FAF to MAP 4.7 NM</p>		<p>2200 4000 5000 6000 7000 8000 9000</p> <p>273°</p> <p>GS 3.00° TCH 57</p>		<p>0.1 1.3 3.3 NM → 6 NM → 3.1 NM 3.1 NM 3.1 NM 3.1 NM 3.1 NM</p>	
<p>Knots 60 90 120 150 180</p> <p>Min:Sec 4:42 3:08 2:21 1:53 1:34</p>		<p>CATEGORY A B C D</p>		<p>S-ILS 27L 854/18 200 (200-1/2)</p>	
<p>S-LOC 27L 1160/24 506 (500-1/2) 1160/55 506 (500-1)</p>		<p>ZOSRO FIX MINIMUMS (DUAL VOR RECEIVERS OR DME REQUIRED)</p>		<p>S-LOC 27L 1080/24 426 (400-1/2) 1080/40 426 (400-3/4)</p>	

EC-3, 14 MAY 2026 to 11 JUN 2026

EC-3, 14 MAY 2026 to 11 JUN 2026