

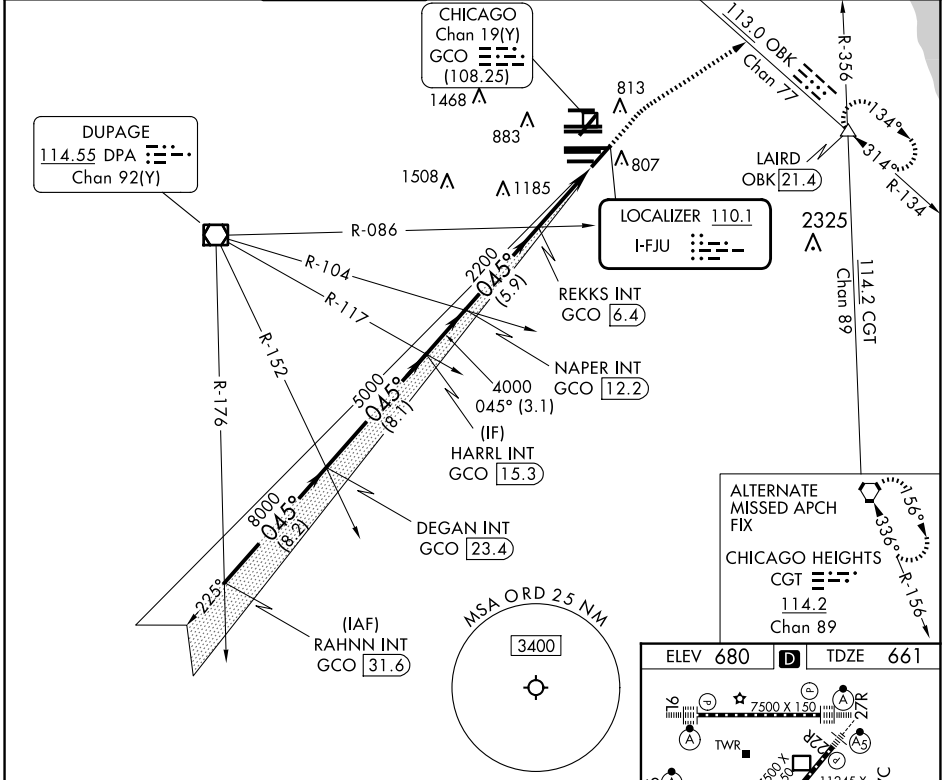
LOC I-FJU <b>110.1</b>	APP CRS <b>045°</b>	Rwy Ldg TDZE Apt Elev	<b>8075</b> <b>661</b> <b>680</b>
---------------------------	------------------------	-----------------------------	---

# ILS or LOC RWY 4R

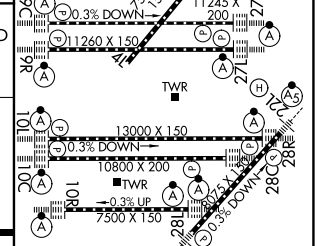
CHICAGO O'HARE INTL (ORD)

RADAR required for procedure entry.		MALSR	MISSED APPROACH: Climb to 1200 then climbing right turn to 4000 on heading 060° and OBK VOR/DME R-134 to LAIRD INT/OBK 21.4 DME and hold.	
-------------------------------------	--	-------	---	--

D-ATIS <b>135.4</b> <b>282.225</b>	CHICAGO APP CON <b>119.0 292.125</b>	O'HARE TOWER <b>120.75 348.0</b>	<b>124.125</b> (TWR NORTH) <b>118.05</b> (TWR SOUTH) <b>226.675</b> (ALL TWRs)	GND CON (TWR CENTER) <b>121.75</b> (OBND) <b>121.9</b> (IBND)	CLNC DEL <b>121.6</b>	CPDLC
--	---	-------------------------------------	--	---	--------------------------	-------



RAHNN INT GCO [31.6]	DEGAN INT GCO [23.4]	HARRL INT GCO [15.3]	NAPER INT GCO [12.2]	REKKS INT GCO [6.4]	LAIRD INT
11000 — 8000 — 5000 — 4000 — 2200 — 2128					
GS 3.00° TCH 52					
— 8.2 NM — 8.1 NM — 3.1 NM — 5.9 NM — 4.4 NM —					



CATEGORY	A	B	C	D
S-ILS 4R	861/18		200 (200-½)	
S-LOC 4R	1160/24 499 (500-½)		1160/50 499 (500-1)	
CIRCLING	1220-1 540 (600-1)		1220-1½ 1460-2½ 540 (600-1½) 780 (800-2½)	

HRL all Rwys	045°				
TDZ/CL all Rwys except 4L	FAF to MAP 4.4 NM				
Knots	60	90	120	150	180
Min:Sec	4:24	2:56	2:12	1:46	1:28

EC-3, 14 MAY 2026 to 11 JUN 2026

EC-3, 14 MAY 2026 to 11 JUN 2026