

LOC/DME I-BYW 110.9 Chan 46	APP CRS 091°	Rwy Ldg 7500 TDZE 680 Apt Elev 680
--	------------------------	---

ILS Y or LOC Y RWY 10R

CHICAGO O'HARE INTL (ORD)

RNAV 1-GPS or RADAR required for procedure entry. DME or RADAR required.
From GIBNS: RNAV-1 GPS required.

Simultaneous approach authorized.

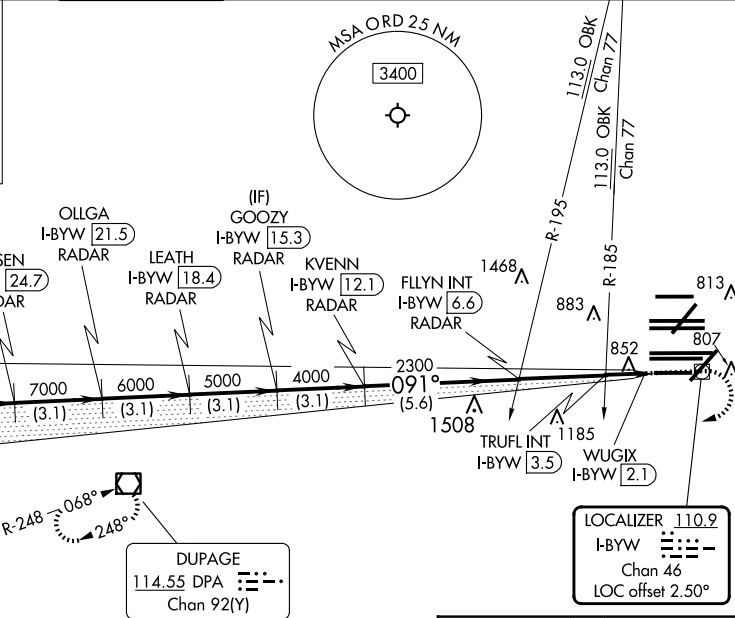
ALSF-2

MISSED APPROACH: Climb to 1200 then climbing right turn to 4000 direct DPA VOR/DME and hold.

D-ATIS 135.4 282.225	CHICAGO APP CON 119.0 292.125	O'HARE TOWER 133.0 348.0	GND CON (TWR CENTER) 124.125 (TWR NORTH) 118.05 (TWR SOUTH) 226.675 (ALL TWRS)	(TWR CENTER) 121.75 (OBND) 121.9 (IBND)	CLNC DEL 121.6	CPDLC
--	---	------------------------------------	--	---	--------------------------	-------

ALTERNATE MISSED APCH FIX

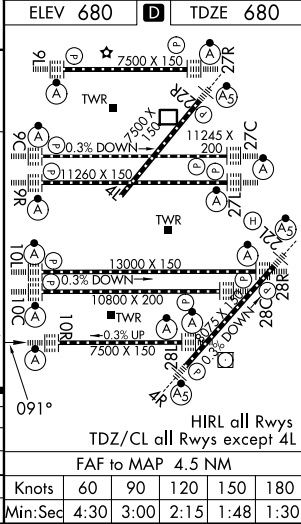
JOLIET
JOT
112.3
Chan 70



EC-3, 14 MAY 2026 to 11 JUN 2026

EC-3, 14 MAY 2026 to 11 JUN 2026

FERIL I-BYW 27.8 RADAR	OLLGA I-BYW 21.5 RADAR	GOOZY I-BYW 15.3 RADAR	FLYIN INT I-BYW 6.6 RADAR	TRUFL INT I-BYW 3.5 RADAR	WUGIX I-BYW 2.1 RADAR
9000	8000	7000	6000	5000	4000
GS 3.00° TCH 55					
*LOC only.					
1200	4000	DPA			
CATEGORY A B C D					
S-ILS 10R	930/24		250 (300-½)		
S-LOC 10R	1220/24	540 (600-½)	1220/55	540 (600-1)	
TRUFL FIX MINIMUMS (DUAL VOR RECEIVERS OR DME REQUIRED)					
S-LOC 10R	1120/24	440 (500-½)	1120/40	440 (500-¾)	



HIREL all Rws TDZ/CL all Rws except 4L					
FAF to MAP 4.5 NM					
Knots	60	90	120	150	180
Min:Sec	4:30	3:00	2:15	1:48	1:30