

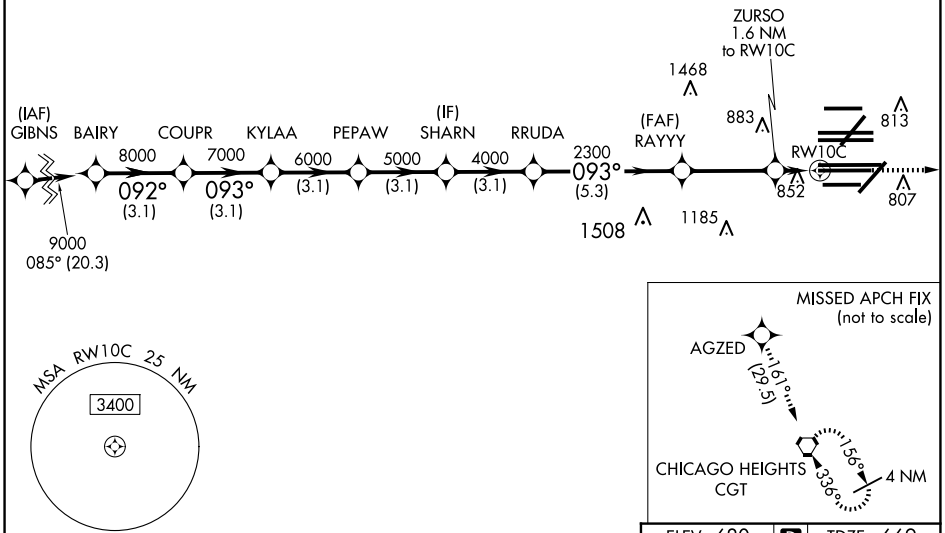
| | | |
|--|------------------------|--|
| WAAS CH 81934 W10B | APP CRS 093° | Rwy Ldg 10540 TDZE 669 Apt Elev 680 |
|--|------------------------|--|

RNAV (GPS) RWY 10C

CHICAGO O'HARE INTL (ORD)

| | | | | | |
|---|---|--|---|--|--|
| RNP APCH - GPS. | | ALSIF-2 | | MISSED APPROACH: Climb to 4000 direct AGZED and on track 161° to CGT VORTAC and hold. | |
| <p>Simultaneous approach authorized. For uncompensated Baro-VNAV systems, LNAV/VNAV NA below -19°C or above 54°C. LNAV procedure NA during simultaneous operations. Use of FD or AP required during simultaneous operations. Rwy 10C helicopter visibility reduction below RVR 4000 NA.</p> | | <p>(TWR CENTER) 121.75 (OBND) 121.9 (IBND)</p> | | <p>CLNC DEL 121.6</p> | |
| D-ATIS 135.4 282.225 | CHICAGO APP CON 119.0 292.125 | O'HARE TOWER 120.75 348.0 | GND CON (TWR NORTH) 124.125 (TWR SOUTH) 118.05 (ALL TWRs) 226.675 | CPDLC | |

RADAR REQUIRED



EC-3, 14 MAY 2026 to 11 JUN 2026

EC-3, 14 MAY 2026 to 11 JUN 2026

| | | | | | | | | |
|---|---------|--------|-------------|--------|-------------|--------|-------------|--------|
| VGSI and RNAV glidepath not coincident (VGSI Angle 3.00/TCH 75). | | 4000 | AGZED | CGT | | | | |
| <p>BAIRY 9000 092°</p> <p>COUPR 8000 093°</p> <p>KYLAA 7000</p> <p>PEPAW 6000</p> <p>SHARN 5000</p> <p>RRUDA 4000</p> <p>RAYYY 2300</p> <p>ZURSO 1.6 NM to RWY10C</p> <p>RWY10C 1220</p> <p>GP 3.00° TCH 55</p> | | ↑ | ✦ | ⬠ | | | | |
| | 3.1 NM | 3.1 NM | 3.1 NM | 3.1 NM | 3.1 NM | 5.3 NM | 3.4 NM | 1.6 NM |
| CATEGORY | A | | B | | C | | D | |
| LPV DA | | | 869/18 | | 200 (200-½) | | | |
| LNAV/VNAV DA | | | 1062/40 | | 393 (400-¾) | | | |
| LNAV MDA | 1120/24 | | 451 (500-½) | | 1120/45 | | 451 (500-¾) | |

