


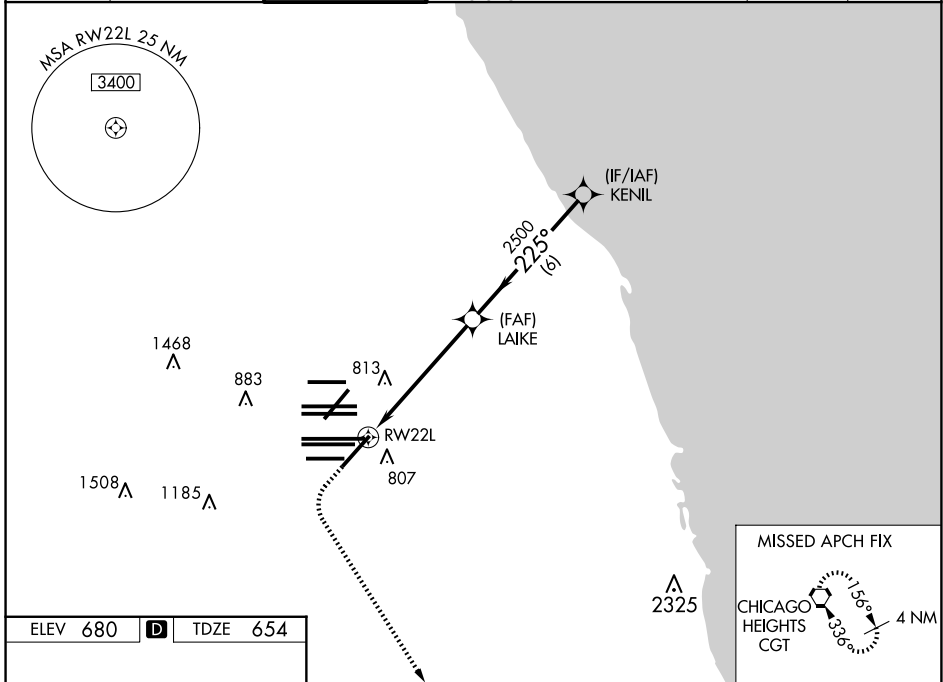
WAAS CH <b>50228</b> <b>W22B</b>	APP CRS <b>225°</b>	Rwy Ldg TDZE Apt Elev	<b>8075</b> <b>654</b> <b>680</b>
--	------------------------	-----------------------------	---

# RNAV (GPS) RWY 22L

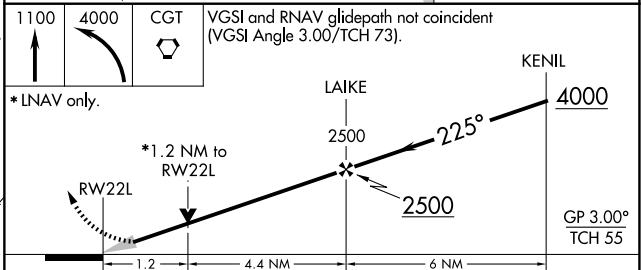
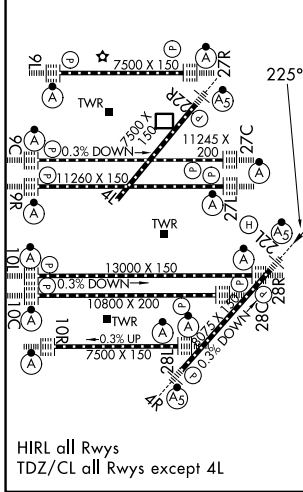
CHICAGO O'HARE INTL (ORD)

<p><b>⚠</b> For uncompensated Baro-VNAV systems, LNAV/VNAV NA below -19°C (-2°F) or above 54°C (130°F). Simultaneous approach authorized with Rwy 22R. DME/DME RNP-0.3 NA. LNAV procedure NA during simultaneous operations. Use of FD or AP providing RNAV track guidance required during simultaneous operations.</p>	<p>MALSR</p> 	<p>MISSED APPROACH: Climb to 1100 then climbing left turn to 4000 direct CGT VORTAC and hold.</p>
---	--	---

D-ATIS <b>135.4</b> <b>282.225</b>	CHICAGO APP CON <b>119.0 292.125</b>	O'HARE TOWER <b>120.75 348.0</b>	GND CON (TWR NORTH) <b>124.125</b> (TWR SOUTH) <b>118.05</b> (ALL TWRs) <b>226.675</b>	(TWR CENTER) <b>121.75</b> (OBND) <b>121.9</b> (IBND)	CLNC DEL <b>121.6</b>	CPDLC
--	---	-------------------------------------	---	---	--------------------------	-------



ELEV 680	<b>D</b>	TDZE 654
----------	----------	----------



CATEGORY	A	B	C	D
LPV DA		854/18	200 (200-1/2)	
LNAV/VNAV DA		1066/45	412 (400-7/8)	
LNAV MDA	1120/24	466 (500-1/2)	1120/50	466 (500-1)
<b>C</b> CIRCLING	1220-1	540 (600-1)	1220-1 1/2 540 (600-1 1/2)	1460-2 1/2 780 (800-2 1/2)

EC-3, 14 MAY 2026 to 11 JUN 2026

EC-3, 14 MAY 2026 to 11 JUN 2026