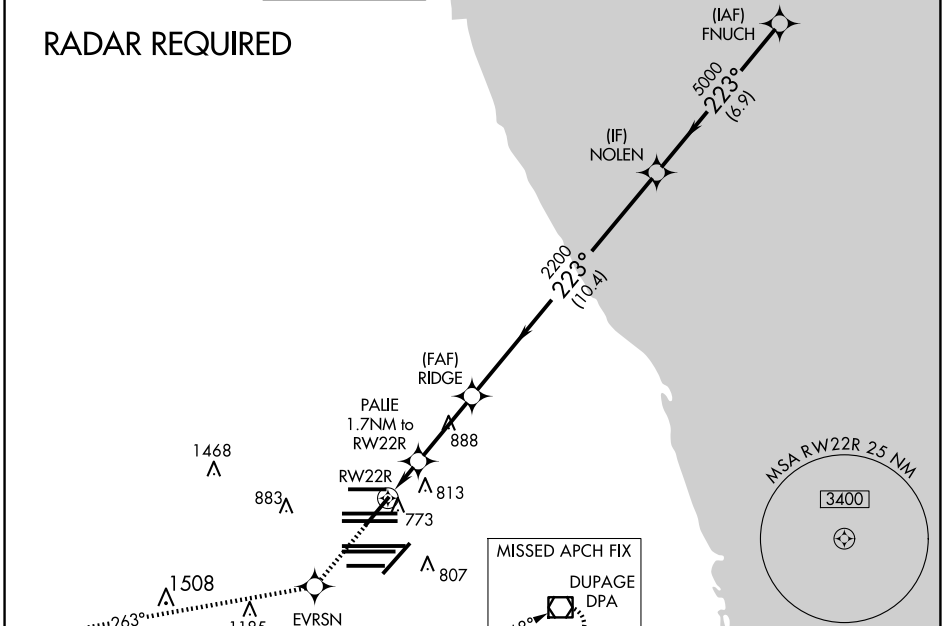


WAAS CH 90504 W22A	APP CRS 223°	Rwy Ldg 7300
	TDZE 652	
	Apt Elev 680	

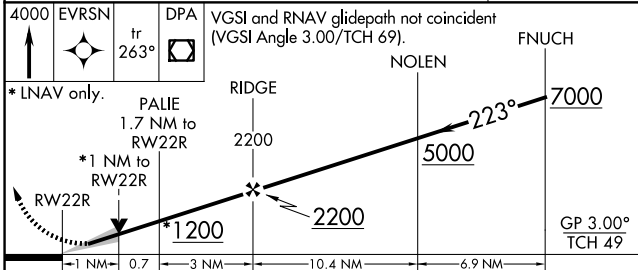
RNAV (GPS) RWY 22R

CHICAGO O'HARE INTL (ORD)

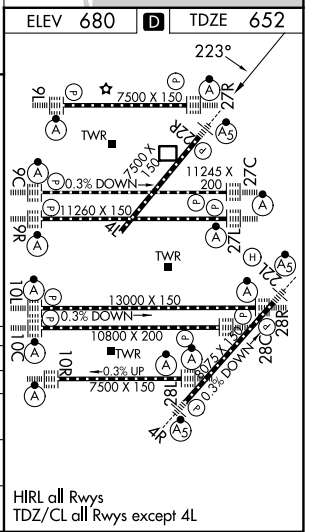
<p>⚠ For uncompensated Baro-VNAV systems, LNAV/VNAV NA below -22°C (-7°F) or above 39°C (102°F). Simultaneous approach authorized with Rwy 22L. DME/DME RNP-0.3 NA. LNAV procedure NA during simultaneous operations. Use of FD or AP providing RNAV track guidance required during simultaneous operations.</p>		<p>MALSR</p>	<p>MISSED APPROACH: Climb to 4000 direct EVRSN and on track 263° to DPA VOR/DME and hold.</p>		
D-ATIS 135.4 282.225	CHICAGO APP CON 119.0 292.125	O'HARE TOWER 126.9 348.0	<p>GND CON (TWR CENTER) 121.75 (OBND) (TWR NORTH) 118.05 (TWR SOUTH) 121.9 (IBND) (ALL TWRs) 226.675</p>	CLNC DEL 121.6	CPDLC



ELEV 680	D	TDZE 652
----------	----------	----------



4000 EVRSN	tr 263°	DPA	VGSI and RNAV glidepath not coincident (VGSI Angle 3.00/TCH 69).	
*LNAV only.	PALIE 1.7 NM to RWY 22R	RIDGE 2200	NOLEN 2200	FNUCH 7000
	*1 NM to RWY 22R			
	1 NM	0.7	3 NM	10.4 NM
				6.9 NM
CATEGORY	A	B	C	D
LPV DA		852/18	200 (200-½)	
LNAV/VNAV DA		972/32	320 (300-¾)	
LNAV MDA	1040/24	388 (400-½)	1040/35	388 (400-¾)
C CIRCLING	1220-1	540 (600-1)	1220-1½	1460-2½
			540 (600-1½)	780 (800-2½)



EC-3, 14 MAY 2026 to 11 JUN 2026

EC-3, 14 MAY 2026 to 11 JUN 2026