

WAAS CH <b>70643</b> <b>W27D</b>	APP CRS <b>273°</b>	Rwy Ldg <b>11245</b> TDZE <b>653</b> Apt Elev <b>680</b>
--	------------------------	--

# RNAV (GPS) RWY 27C

CHICAGO O'HARE INTL (ORD)

RNP APCH.

Simultaneous approach authorized. LNAV procedure NA during simultaneous operations. Use of FD or AP required during simultaneous operations. For uncompensated Baro-VNAV systems, LNAV/VNAV NA below -19°C or above 54°C. For inop ALS, increase LNAV Cat C/D visibility to RVR 6000.

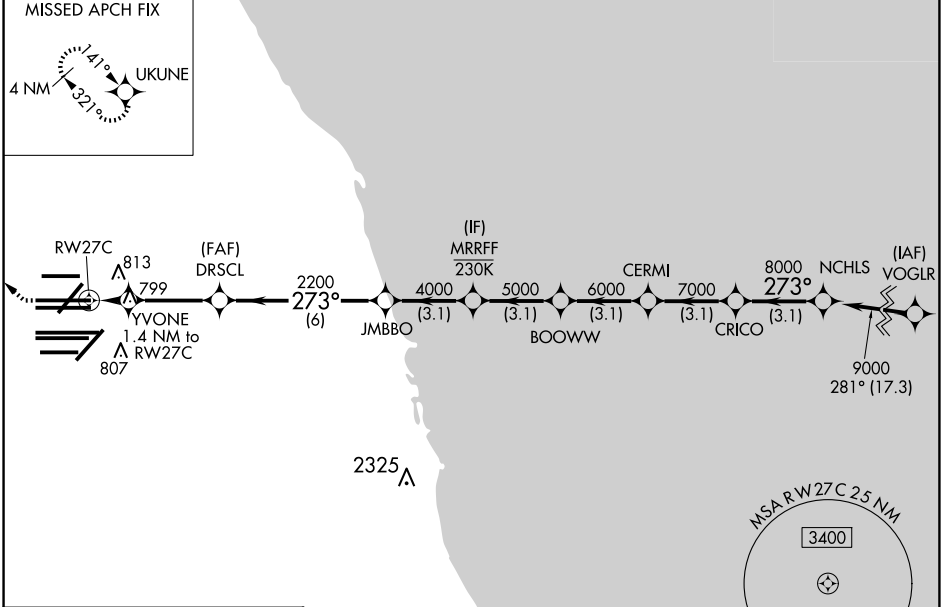
ALSF-2



MISSED APPROACH:  
Climb to 1100 then climbing right turn to 4000 direct UKUNE and hold.

D-ATIS <b>135.4</b> <b>282.225</b>	CHICAGO APP CON <b>119.0 292.125</b>	O'HARE TOWER <b>121.15 348.0</b>	GND CON <b>124.125</b> (TWR NORTH) <b>118.05</b> (TWR SOUTH) <b>226.675</b> (ALL TWRs)	(TWR CENTER) <b>121.75</b> (OBND) <b>121.9</b> (IBND)	CLNC DEL <b>121.6</b>	CPDLC
--	---	-------------------------------------	---	---	--------------------------	-------

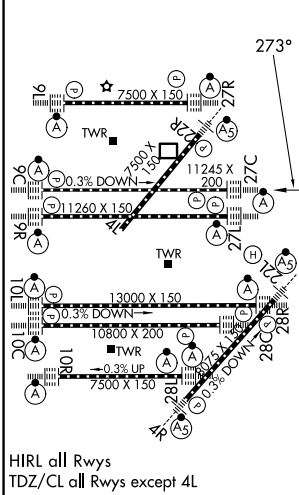
MISSED APCH FIX



EC-3, 14 MAY 2026 to 11 JUN 2026

EC-3, 14 MAY 2026 to 11 JUN 2026

ELEV 680	<b>D</b>	TDZE 653
----------	----------	----------



HIRL all Rwys  
TDZ/CL all Rwys except 4L

1100	4000	UKUNE	VGSi and RNAV glidepath not coincident (VGSi Angle 3.00/TCH 75).			NCHLS			
*LNAV only.		YVONE 1.4 NM to RW27C	DRSCL	JMBBO	MRRFF	BOOWW	CERMI	CRICO	9000
		2200	2200	4000	5000	6000	7000	8000	
		1160*	2200						
	1.4	3.3	3.1	3.1	3.1	3.1	3.1	3.1	
GP 3.00°									TCH 56
CATEGORY	A		B		C		D		
LPV DA			853/18		200 (200-1/2)				
LNAV/VNAV DA			1086/40		433 (500-3/4)				
LNAV MDA	1060/24		407 (400-1/2)		1060/40		407 (400-3/4)		