

WAAS CH <b>58143</b> <b>W09D</b>	APP CRS <b>093°</b>	Rwy Ldg TDZE Apt Elev	<b>11245</b> <b>673</b> <b>680</b>
--	------------------------	-----------------------------	--


# RNAV (GPS) RWY 9C

CHICAGO O'HARE INTL (O.R.D)

**RNP APCH.**

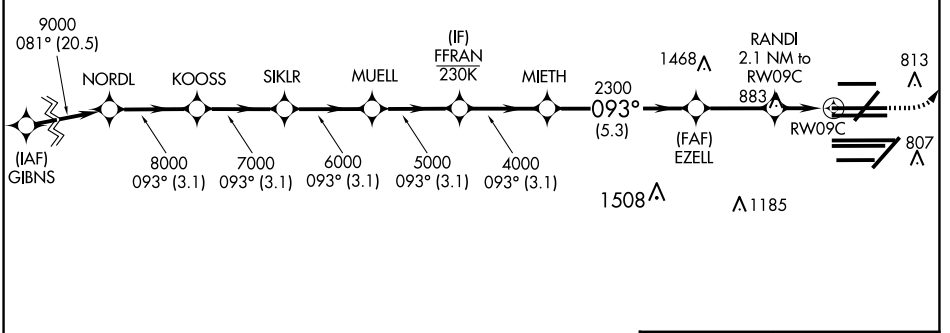
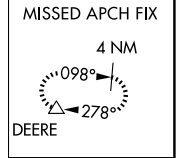
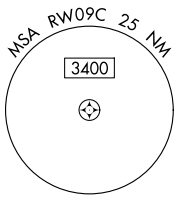
▼ Simultaneous approach authorized. LNAV procedure NA during simultaneous operations. Use of FD or AP required during simultaneous operations. For uncompensated Baro-VNAV systems, LNAV/VNAV NA below -19°C or above 54°C. For inop ALS, increase LNAV/VNAV all cats visibility to RVR 4500 and LNAV Cat C/D to 1% SM.

**ALSF-2**



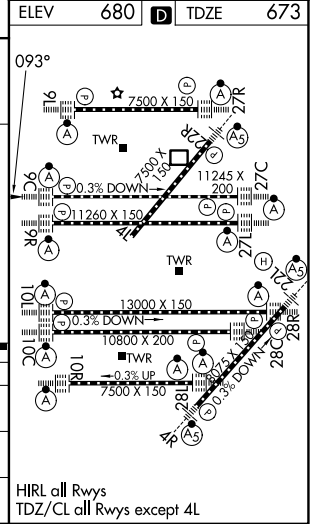
**MISSED APPROACH:** Climb to 1200 then climbing left turn to 4000 direct DEERE and hold.

D-ATIS <b>135.4</b> <b>282.225</b>	CHICAGO APP CON <b>119.0 292.125</b>	O'HARE TOWER <b>121.15 348.0</b>	<b>124.125</b> GND CON (TWR NORTH) <b>118.05</b> (TWR SOUTH) <b>226.675</b> (ALL TWRs)	(TWR CENTER) <b>121.75</b> (OBND) <b>121.9</b> (IBND)	CLNC DEL <b>121.6</b>	CPDLC
--	---	-------------------------------------	--	---	--------------------------	-------



VGSI and RNAV glidepath not coincident (VGSI Angle 3.00/TCH 72).

	9000	8000	7000	6000	5000	4000	2300	1400	
	093°		093°		093°		093°		093°
	-3.1 NM		3.1 NM		3.1 NM		3.1 NM		5.3 NM
CATEGORY	A		B		C		D		
LPV DA			873/18		200 (200-½)				
LNAV/VNAV DA			976/24		303 (300-½)				
LNAV MDA	1140/24		467 (500-½)		1140/50		467 (500-1)		



EC-3, 14 MAY 2026 to 11 JUN 2026

EC-3, 14 MAY 2026 to 11 JUN 2026