

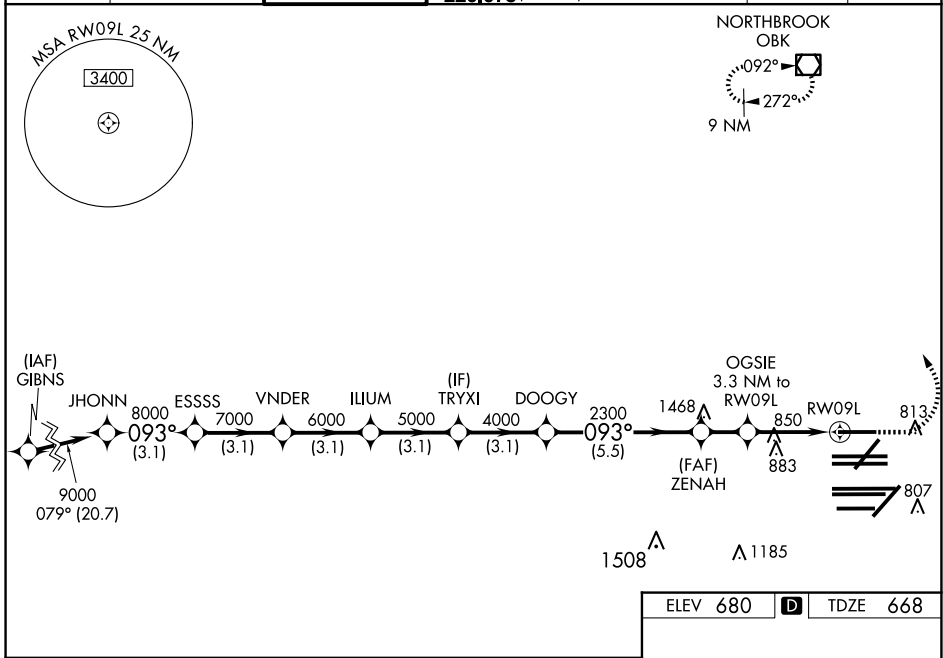
WAAS CH 99508 W09B	APP CRS 093°	Rwy Ldg 7500 TDZE 668 Apt Elev 680
--	------------------------	---

RNAV (GPS) RWY 9L

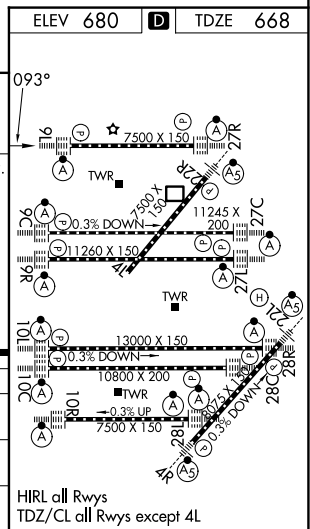
CHICAGO O'HARE INTL (ORD)

RADAR required for procedure entry. RNP APCH.		ALSIF-2 	MISSED APPROACH: Climb to 1100 then climbing left turn to 4000 direct OBK VOR/DME and hold, continue climb-in-hold to 4000.
<p>Simultaneous approach authorized. LNAV procedure NA during simultaneous operations. Use of FD or AP providing RNAV track guidance required during simultaneous operations. For uncompensated Baro-VNAV systems, procedure NA below -19°C or above 54°C.</p>			

D-ATIS 135.4 282.225	CHICAGO APP CON 119.0 292.125	O'HARE TOWER 128.15 348.0	GND CON (TWR NORTH) 124.125 (TWR SOUTH) 118.05 (ALL TWRS) 226.675	(TWR CENTER) 121.75 (OBND) 121.9 (IBND)	CLNC DEL 121.6	CPDLC
--	---	-------------------------------------	--	--	--------------------------	-------



JHONN 9000	ESSSS 8000	VNDER 7000	ILIUM 6000	TRYXI 5000	DOOGY 4000	ZENAH 2300	OGSIE 3.3 NM to RW09L	RW09L
GP 3.00° TCH 55							*1.2 NM to RW09L	
3.1 NM	3.1 NM	3.1 NM	3.1 NM	3.1 NM	5.5 NM	1.7 NM	2.1	1.2
CATEGORY	A		B		C		D	
LPV DA	868/18		200 (200-½)					
LNAV/VNAV DA	1034/35		366 (400-¾)					
LNAV MDA	1100/24		432 (500-½)		1100/40		432 (500-¾)	



EC-3, 14 MAY 2026 to 11 JUN 2026

EC-3, 14 MAY 2026 to 11 JUN 2026