

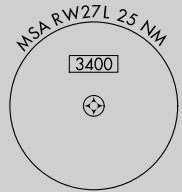
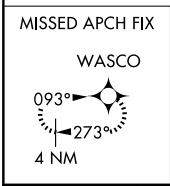
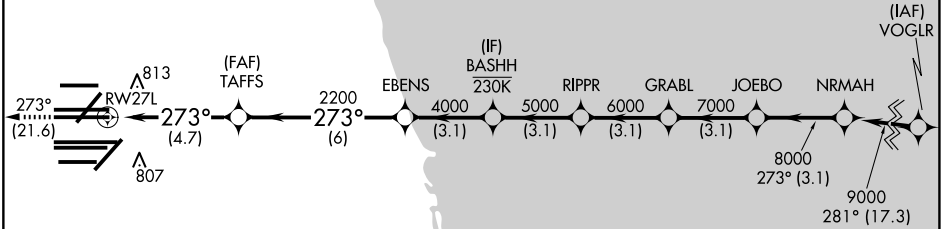
APP CRS	Rwy Ldg	11260
273°	TDZE	654
	Apt Elev	680

RNAV (RNP) Y RWY 27L

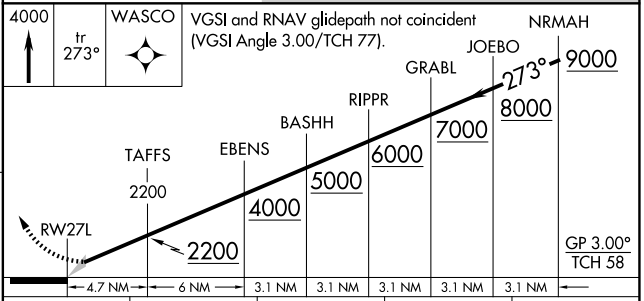
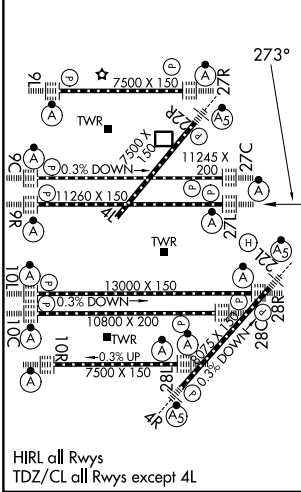
CHICAGO O'HARE INTL (ORD)

RNP AR APCH - GPS.				MISSED APPROACH: Climb to 4000 on track 273° to WASCO and hold.		
Simultaneous approach authorized. Use of FD or AP required during simultaneous operations. For uncompensated Baro-VNAV systems, procedure NA below -19°C or above 54°C.						
D-ATIS	CHICAGO APP CON	O'HARE TOWER	GND CON (TWR NORTH)	(TWR CENTER) (OBND)	CLNC DEL	CPDLC
135.4	119.0 292.125	126.9 348.0	124.125	121.75	121.6	
282.225			118.05 (TWR SOUTH)	121.9 (IBND)		
			226.675 (ALL TWRs)			

RADAR REQUIRED



ELEV	680	D	TDZE	654
------	------------	----------	------	------------



CATEGORY	A	B	C	D
RNP 0.15 DA		989/26	335 (400-½)	
RNP 0.30 DA		1133/50	479 (500-1)	

AUTHORIZATION REQUIRED

EC-3, 14 MAY 2026 to 11 JUN 2026

EC-3, 14 MAY 2026 to 11 JUN 2026