

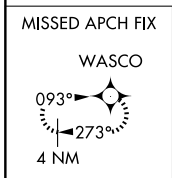
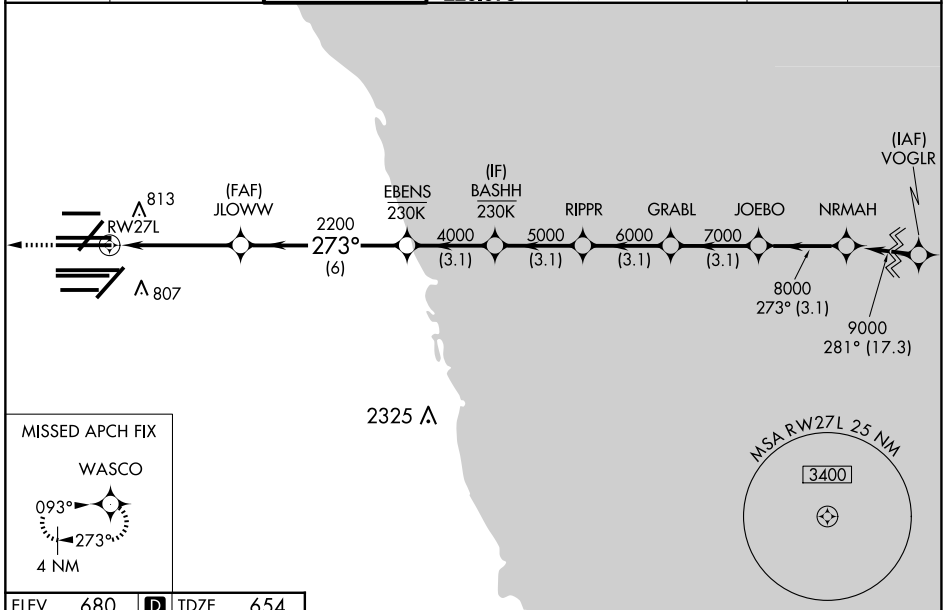
WAAS CH 77804 W27A	APP CRS 273°	Rwy Ldg 11260 TDZE 654 Apt Elev 680
--	------------------------	--

RNAV (GPS) Z RWY 27L

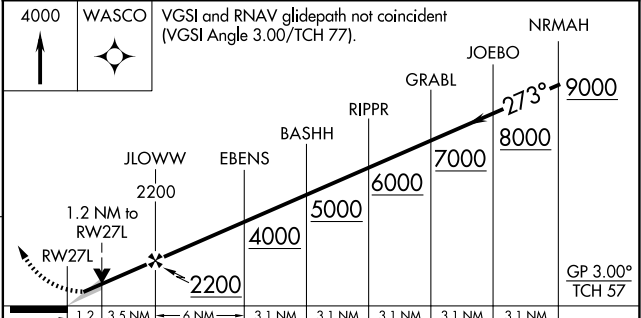
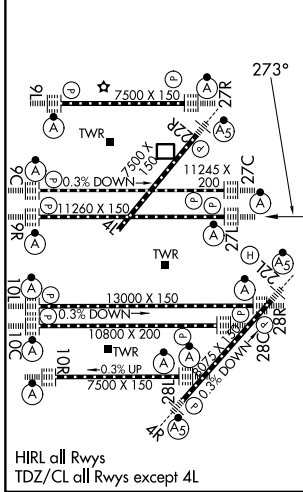
CHICAGO O'HARE INTL (ORD)

RNP APCH - GPS.		ALSF-2	MISSED APPROACH: Climb to 4000 direct WASCO and hold.
<p>Simultaneous approach authorized. LNAV procedure NA during simultaneous operations. Use of FD or AP required during simultaneous operations. For uncompensated Baro-VNAV systems, LNAV/VNAV NA below -19°C or above 54°C.</p>			

D-ATIS 135.4 282.225	CHICAGO APP CON 119.0 292.125	O'HARE TOWER 126.9 348.0	GND CON (TWR NORTH) 124.125 (TWR SOUTH) 118.05 (ALL TWRs) 226.675	(TWR CENTER) 121.75 (IOBND) 121.9 (IBND)	CLNC DEL 121.6	CPDLC
--	---	------------------------------------	---	--	--------------------------	-------



ELEV 680	D	TDZE 654
-----------------	----------	-----------------



CATEGORY	A	B	C	D
LPV DA		854/18	200 (200-1/2)	
LNAV/VNAV DA		1088/40	434 (500-3/4)	
LNAV MDA	1100/24	446 (500-1/2)	1100/45	446 (500-7/8)

EC-3, 14 MAY 2026 to 11 JUN 2026

EC-3, 14 MAY 2026 to 11 JUN 2026