



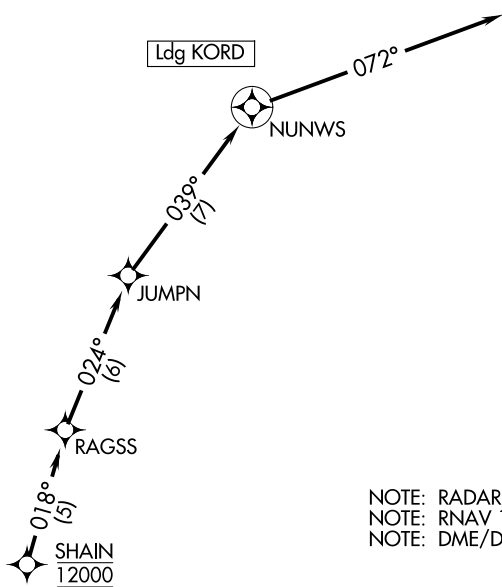
(SHAIN.SHAIN2) 20310

AL-166

CHICAGO O'HARE INTL (ORD)  
CHICAGO, ILLINOIS

# SHAIN TWO ARRIVAL(RNAV) Arrival Routes

CHICAGO APP CON  
119.0 292.125  
D-ATIS  
135.4 282.225



NOTE: RADAR required.  
NOTE: RNAV 1.  
NOTE: DME/DME/IRU or GPS required.

NOTE: Chart note to scale.

## ARRIVAL ROUTE DESCRIPTION

From SHAIN on track 018° to RAGSS, then on track 024° to JUMPN, then on track 039° to NUNWS, then on track 072°. Expect RADAR vectors to final approach course.

SHAIN TWO ARRIVAL(RNAV) Arrival Routes  
(SHAIN.SHAIN2) 05NOV20

CHICAGO, ILLINOIS  
CHICAGO O'HARE INTL (ORD)

EC-3, 14 MAY 2026 to 11 JUN 2026

EC-3, 14 MAY 2026 to 11 JUN 2026