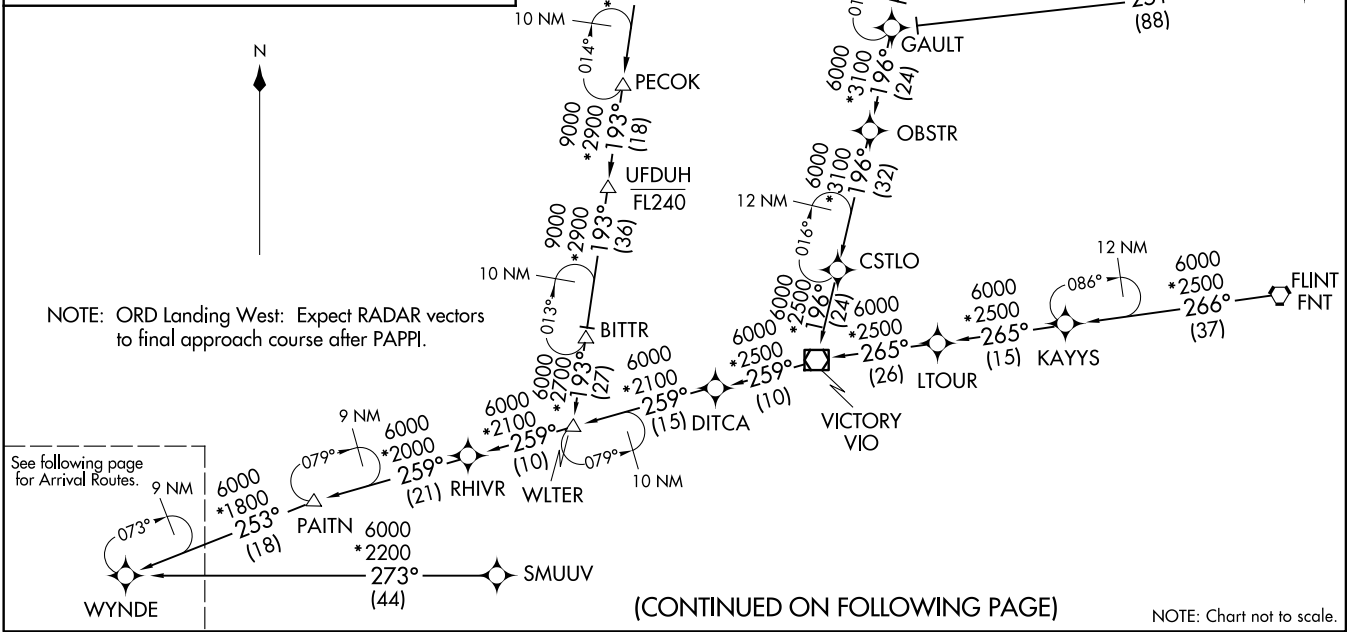


WYNDE THREE ARRIVAL (RNAV) Transition Routes  
WYNDE.WYNDE3 07 AUG 25  
CHICAGO, ILLINOIS  
CHICAGO O'HARE INTL (ORD)

- FLINT TRANSITION (FNT.WYNDE3)
- KAYYS TRANSITION (KAYYS.WYNDE3)
- OBSTR TRANSITION (OBSTR.WYNDE3)
- ODAXY TRANSITION (ODAXY.WYNDE3)
- SAULT STE MARIE TRANSITION (SSM.WYNDE3)
- SMUUV TRANSITION (SMUUV.WYNDE3)
- TRAVERSE CITY TRANSITION (TVC.WYNDE3)
- UFDUH TRANSITION (UFDUH.WYNDE3)
- VICTORY TRANSITION (VIO.WYNDE3)

RNAV 1 - DME/DME/IRU or GPS.  
RADAR required.

CHICAGO APP CON  
119.0 292.125  
D-ATIS  
135.4 282.225



(CONTINUED ON FOLLOWING PAGE)

NOTE: Chart not to scale.

WYNDE.WYNDE3 25219  
AL-156 (FAA)  
CHICAGO O'HARE INTL (ORD)  
CHICAGO, ILLINOIS

ARRIVAL ROUTE DESCRIPTION

From WYNDE on track 253° to FIYER, then on track 253° to ERNNY, then on track 221° to PAPP1, then on track 221° to TUBEZ.

LANDING RUNWAYS 4R, 9L/C/R, 22L/R, 27L/C/R, 28L/C/R:

From TUBEZ on track 221° to VULCN, then on track 273° to KURKK, then on track 273° to BAMBB, then on track 273°. Expect RADAR vectors to final approach course.

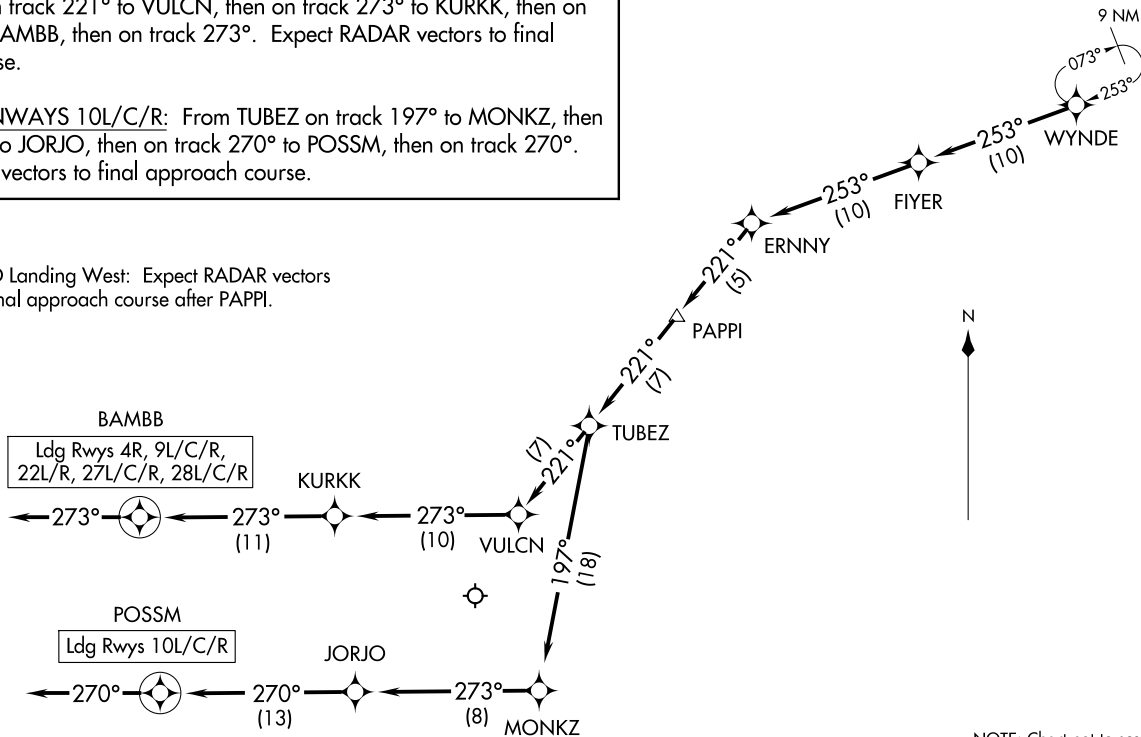
LANDING RUNWAYS 10L/C/R: From TUBEZ on track 197° to MONKZ, then on track 273° to JORJO, then on track 270° to POSSM, then on track 270°. Expect RADAR vectors to final approach course.

RNAV 1 - DME/DME/IRU or GPS.

RADAR required.

CHICAGO APP CON  
119.0 292.125  
D-ATIS  
135.4 282.225

NOTE: ORD Landing West: Expect RADAR vectors to final approach course after PAPP1.



NOTE: Chart not to scale.

WYNDE THREE ARRIVAL (RNAV) Arrival Routes  
(WYNDE: WYNDE3) 07 AUG 25

CHICAGO, ILLINOIS  
CHICAGO O'HARE INTL (ORD)

(WYNDE: WYNDE3) 25219  
WYNDE THREE ARRIVAL (RNAV) Arrival Routes  
AL-166 (FAA)

CHICAGO O'HARE INTL (ORD)  
CHICAGO, ILLINOIS