

GOLDSBORO, NORTH CAROLINA

HI-ILS or LOC Z RWY 8

LOC I-GSB 109.3	APCH CRS 081°	Rwy Idg 11,760 TDZE 73 Arprt Elev 109
---------------------------	-------------------------	------------------------------------------------------------------

[USAF]

SEYMOUR JOHNSON AFB (KGSB)

RADAR or DME required.

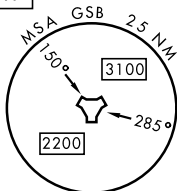
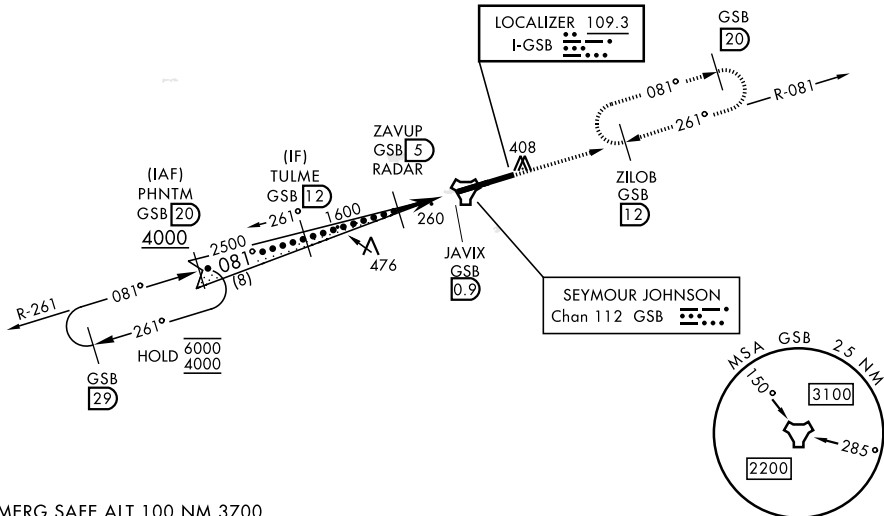
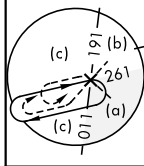


MISSED APPROACH: Climb to 2300 via GSB R-081 to ZILOB and hold.

- ▼ * When ALS inop, increase RVR to 40 and vis to 3/4 mile.
- ** When ALS inop, increase vis to 1 3/8 miles.
- *** Circling N of Rwy 8-26 not authorized.

ATIS ★ 317.625	APP CON 123.7 290.9 (258°-110°) 119.7 273.6 (111°-257°)	TOWER ★ 126.25 370.875	GND CON 132.45 275.8
--------------------------	-----------------------------------------------------------------------------	----------------------------------	--------------------------------

CAUTION: Autopilot coupled operations not authorized below 266' MSL.



EMERG SAFE ALT 100 NM 3700

VGSi and ILS glidepath not coincident (VGSi Angle 3.00/TCH 55). PHNTM R-261 GSB 20 TULME GSB 12 ZAVUP RADAR GSB 5 SOBOE GSB 3 JAVIX GSB 0.9 GS 3.00° TCH 47 4000, 2500, 1600, 940, 2300 GSB, ZILOB R-081 12		ELEV 109	TDZE 73
CATEGORY	C	D	E
S-ILS 8*	273/24	200	(200-1/2)
S-LOC 8**	520/45	447	(500-3/4)
CIRCLING ***	680-1 1/2	740-2	740-2 1/4
	571 (600-1 1/2)	631 (700-2)	631 (700-2 1/4)
HIRL Rwy 8-26			
FAF to MAP 4.1 NM			
Knots	120	140	160 180 200
Min:Sec	2:03	1:45	1:32 1:22 1:14

GOLDSBORO, NORTH CAROLINA

35° 20' N-77° 58' W

SEYMOUR JOHNSON AFB (KGSB)

Amdt 8 17APR25

HI-ILS or LOC Z RWY 8

SE-2, 14 MAY 2026 to 11 JUN 2026

SE-2, 14 MAY 2026 to 11 JUN 2026