

HI-TACAN Z RWY 26

TACAN GSB Chan 112	APCH CRS 261°	Rwy ldg 11,760 TDZE 109 Arprt Elev 109
-----------------------	------------------	--

[USAF]

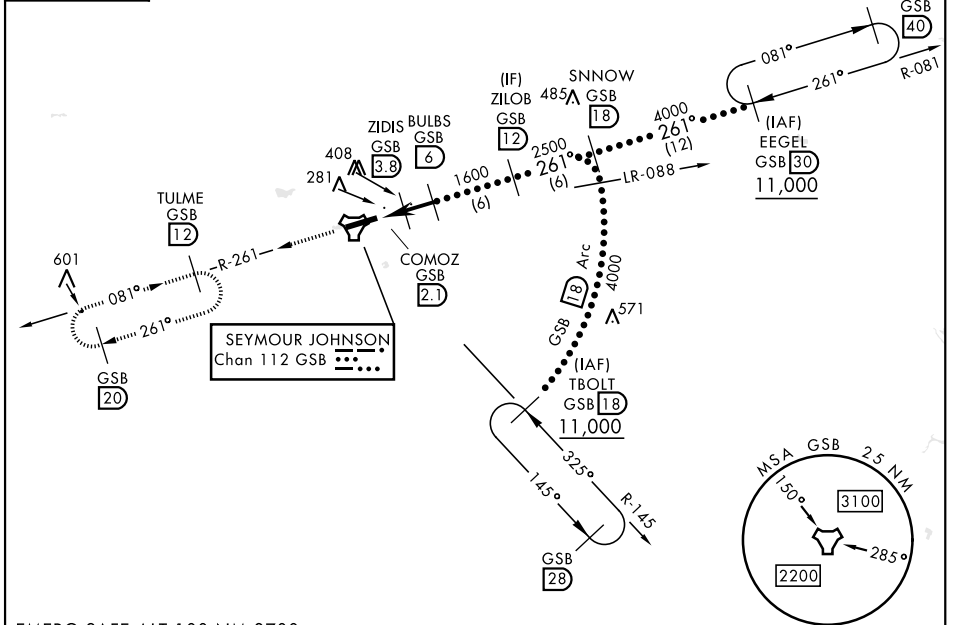
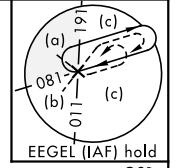
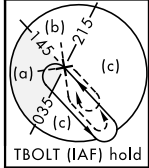
SEYMOUR JOHNSON AFB (KGSB)

▼ * When ALS inop, increase vis to 1¼ miles.
 ** Circling N of Rwy 8-26 not authorized.



MISSED APPROACH: Climb to 2200 via GSB R-261 to TULME and hold.

ATIS ★ 317.625	APP CON 123.7 290.9 (258°-110°) 119.7 273.6 (111°-257°)	TOWER ★ 126.25 370.875	GND CON 132.45 275.8
-------------------	---	---------------------------	-------------------------

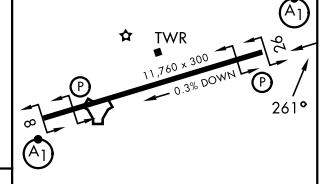
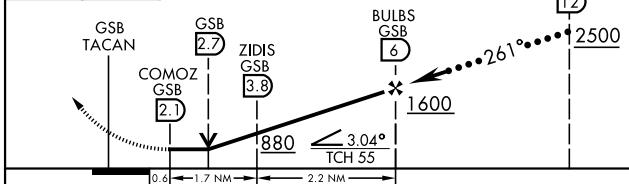


SE-2, 14 MAY 2026 to 11 JUN 2026

SE-2, 14 MAY 2026 to 11 JUN 2026

EMERG SAFE ALT 100 NM 3700

2200 GSB R-261	TULME R-261 12	ELEV 109	TDZE 109
-------------------	----------------------	----------	----------



CATEGORY	C	D	E
S-26*	540/40	431 (500-¾)	
CIRCLING**	680-1½ 571 (600-1½)	740-2 631 (700-2)	740-2¼ 631 (700-2¼)

HIRL Rwy 8-26

HI-TACAN Z RWY 26