

GOLDSBORO, NORTH CAROLINA

ILS or LOC Y RWY 26

LOC I-DDX 109.9	APCH CRS 261°	Rwy ldg 11,760 TDZE 109 Arprt Elev 109
---------------------------	-------------------------	---

[USAF]

SEYMOUR JOHNSON AFB (KGSB)

RADAR or DME required



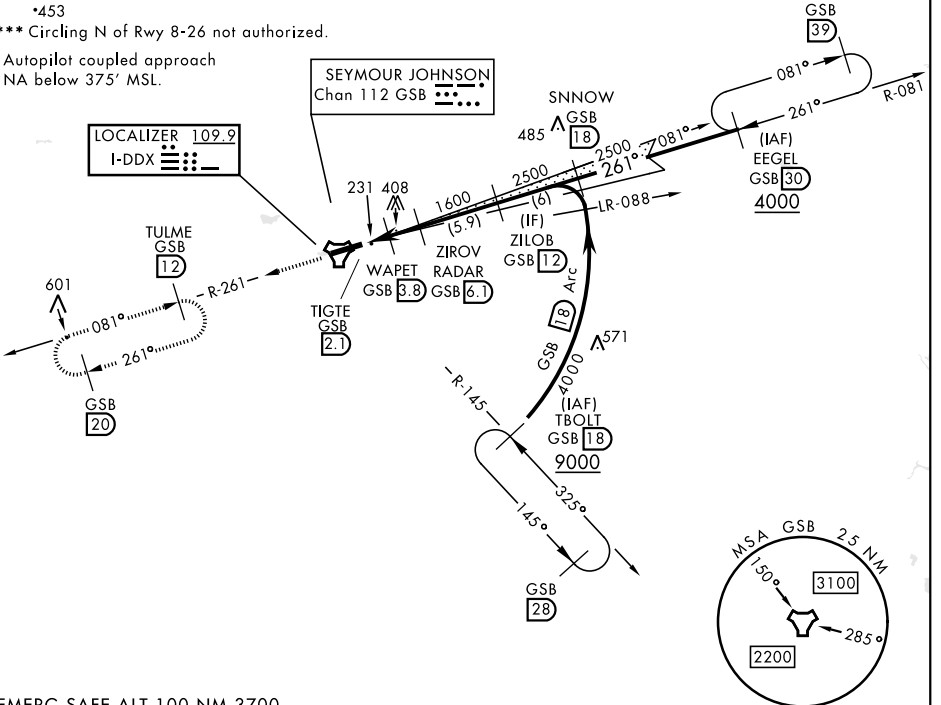
MISSED APPROACH: Climb to 2200 via GSB TACAN R-261 to TULME and hold.

▼ * When ALS inop, increase RVR to 40 and vis to 3/4 mile.
** When ALS inop, increase CAT AB RVR to 55 and vis to 1 mile, CAT CDE RVR to 60 and vis to 1 1/2 miles.

ATIS ★ 317.625	APP CON 123.7 290.9 (258°-110°) 119.7 273.6 (111°-257°)	TOWER ★ 126.25 370.875	GND CON 132.45 275.8
--------------------------	---	----------------------------------	--------------------------------

*453
*** Circling N of Rwy 8-26 not authorized.

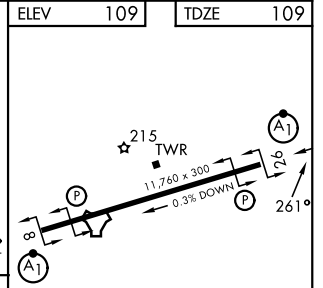
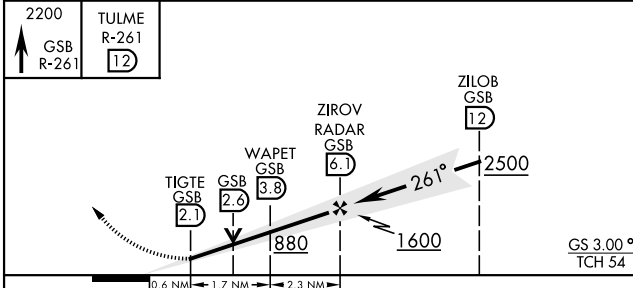
Autopilot coupled approach
NA below 375' MSL.



SE-2, 14 MAY 2026 to 11 JUN 2026

SE-2, 14 MAY 2026 to 11 JUN 2026

EMERG SAFE ALT 100 NM 3700



CATEGORY	A	B	C	D	E
S-ILS 26*	309/24		200	(200-1/2)	
S-LOC 26**	500/24	391 (400-1/2)	500/35		391 (400-5/8)
CIRCLING ***	580-1	600-1	680-1 1/2	740-2	740-2 1/4
	471 (500-1)	491 (500-1)	571 (600-1 1/2)	631 (700-2)	631 (700-2 1/4)

HIRL Rwy 8-26

FAF to MAP 4 NM					
Knots	60	90	120	150	180
Min:Sec	4:00	2:40	2:00	1:36	1:20

GOLDSBORO, NORTH CAROLINA

35°20'N-77°58'W

SEYMOUR JOHNSON AFB (KGSB)

Amdt 9 03NOV22

ILS or LOC Y RWY 26